


WAAS CH <b>40428</b> <b>W25A</b>	APP CRS <b>263°</b>	Rwy Idg <b>12000</b> TDZE <b>5355</b> Apt Elev <b>5434</b>
--	------------------------	--

# RNAV (GPS) Y RWY 25

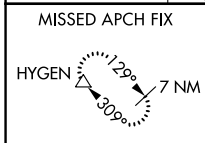
DENVER INTL (DEN)

▼ For uncompensated Baro-VNAV systems, LNAV/VNAV NA below -25°C (-13°F) or above 46°C (116°F). Simultaneous approach authorized with Rwy 26. DME/DME RNP-0.3 NA. Use of FD or AP providing track guidance required during simultaneous operations. LNAV procedure NA during simultaneous operations. For inoperative MALSR, increase LNAV/VNAV all Cats visibility to RVR 4500. #RVR 1800 authorized with use of FD or AP or HUD to DA.

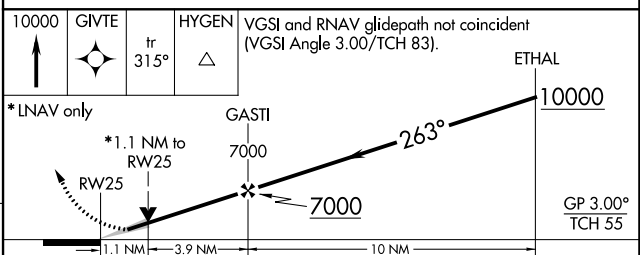
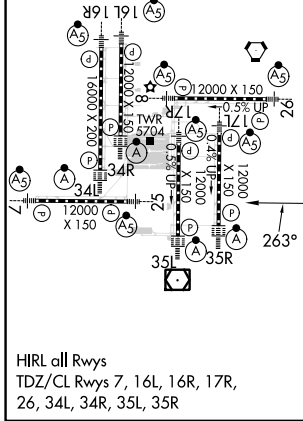
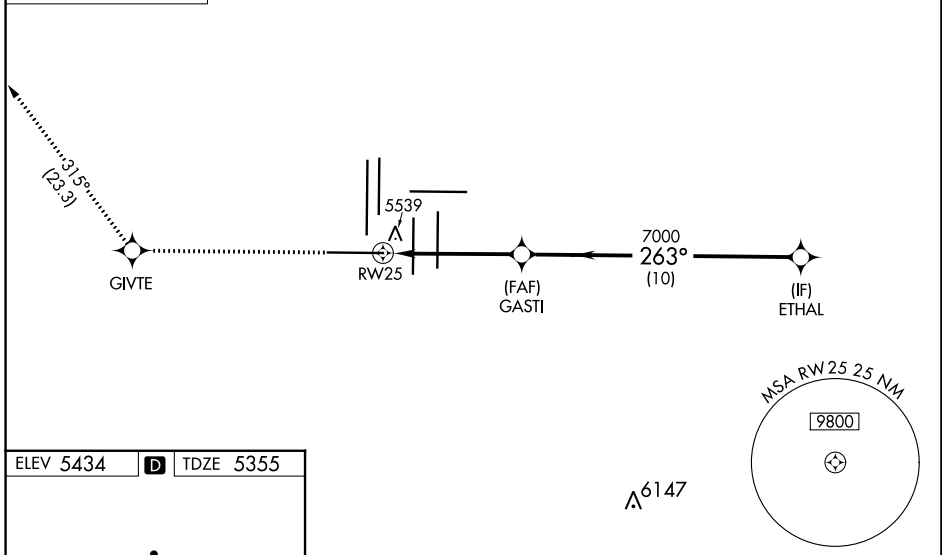
MALSR 

MISSED APPROACH: Climb to 10000 direct GIVTE and on track 315° to HYGEN and hold.

D-ATIS ARR <b>125.6 379.9</b> DEP <b>134.025</b>	DENVER APP CON <b>119.3 307.3</b> (NORTH) <b>120.35 379.3</b> (SOUTH)	DENVER TOWER <b>128.75 273.55</b>	GND CON <b>121.35 379.175</b>	CLNC DEL <b>118.75</b>	CPDLC
--	---	--------------------------------------	----------------------------------	---------------------------	-------



## RADAR REQUIRED



CATEGORY	A	B	C	D
LPV DA#	5555/24 200 (200-½)			
LNAV/VNAV DA	5700/30 345 (300-⅝)			
LNAV MDA	5800/24 445 (400-½)		5800/45 445 (400-⅞)	

SW-1, 22 FEB 2024 to 21 MAR 2024

SW-1, 22 FEB 2024 to 21 MAR 2024