


| | | |
|--|------------------------|--|
| WAAS CH 93529 W17B | APP CRS 173° | Rwy Idg 12000 TDZE 5392 Apt Elev 5434 |
|--|------------------------|--|

RNAV (GPS) Y RWY 17R

DENVER INTL (DEN)

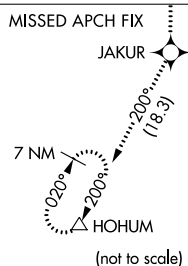
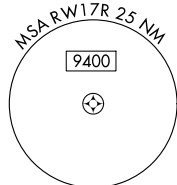
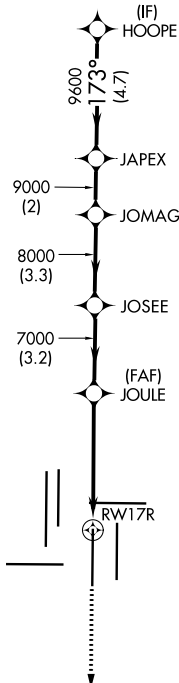
▼ For uncompensated Baro-VNAV systems, LNAV/VNAV NA below -25°C (-13°F) or above 46°C (116°F). Simultaneous approach authorized with Rwy 16L/16R and 17L. DME/DME RNP-0.3 NA. For inoperative MALSR, increase LNAV/VNAV all Cats visibility to 1½ mile, and LNAV Cat C/D to 1¾ mile. LNAV procedure NA during simultaneous operations. Use of FD or AP providing RNAV track guidance required during simultaneous operations.

MALSR

MISSED APPROACH:
 Climb to 10000 direct JAKUR and on track 200° to HOHUM and hold.

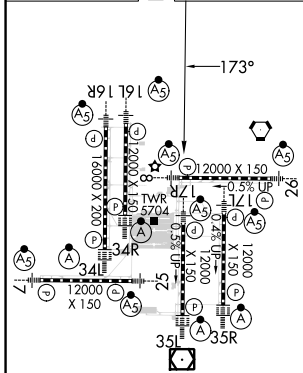
| | | | | | |
|--|---|-------------------------------------|--------------------------------|---------------------------|-------|
| D-ATIS ARR 125.6 379.9 DEP 134.025 | DENVER APP CON 119.3 307.3 (NORTH) 120.35 379.3 (SOUTH) | DENVER TOWER 124.3 322.45 | GND CON 121.85 377.1 | CLNC DEL 118.75 | CPDLC |
|--|---|-------------------------------------|--------------------------------|---------------------------|-------|

RADAR REQUIRED

△ 6260



| | | |
|------------------|----------|------------------|
| ELEV 5434 | D | TDZE 5392 |
|------------------|----------|------------------|



| | | | | | | | | |
|------------|-------|--------------------|--------|--|-------|--------|-----------------|-------|
| 10000 | JAKUR | tr 200° | HOHUM | VGSI and RNAV glidepath not coincident (VGSI Angle 3.00/TCH 69). | | | | HOOPE |
| *LNAV only | | *1.6 NM to RWY 17R | | JOULE | JOSEE | JOMAG | JAPEX | HOOPE |
| RWY 17R | | 7000 | 8000 | 9000 | 9600 | 173° | | 11000 |
| 1.6 | | 3.3 NM | 3.2 NM | 3.3 NM | 2 NM | 4.7 NM | GP 3.00° TCH 60 | |

| | | | | |
|--------------|---------|-------------|--------------|--------------|
| CATEGORY | A | B | C | D |
| LPV DA | 5592/18 | | 200 (200-½) | |
| LNAV/VNAV DA | 5857/60 | | 465 (500-1¼) | |
| LNAV MDA | 5940/24 | 548 (600-½) | 5940-1¼ | 548 (600-1¼) |

HIRL all Rwys
 TDZ/CL Rwys 7, 16L, 16R, 17R,
 26, 34L, 34R, 35L, 35R

SW-1, 22 FEB 2024 to 21 MAR 2024

SW-1, 22 FEB 2024 to 21 MAR 2024