


WAAS CH 81830 W17A	APP CRS 173°	Rwy Idg 12000 TDZE 5339 Apt Elev 5434
--	------------------------	--

RNAV (GPS) Y RWY 17L

DENVER INTL (DEN)

▼ For uncompensated Baro-VNAV systems, LNAV/VNAV NA below -25°C (-13°F) or above 48°C (119°F). DME/DME RNP-0.3 NA. LNAV procedure NA during simultaneous operations. For inoperative MALS R increase LNAV Cats C/D visibility to RVR 5500. Use of FD or AP providing RNAV track guidance required during simultaneous operations. Simultaneous approach authorized with Rwy 16L/16R and 17R.
RVR 1800 authorized with use of FD or AP or HUD to DA.

MALS R

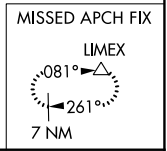
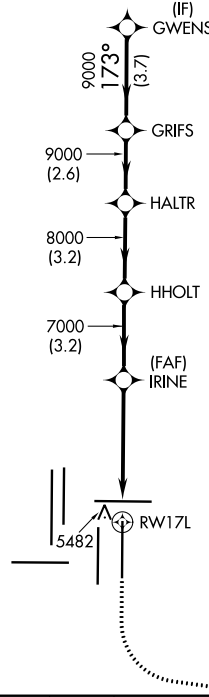
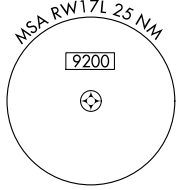


MISSED APPROACH: Climb to 5900 then climbing left turn to 10000 direct LIMEX and hold.

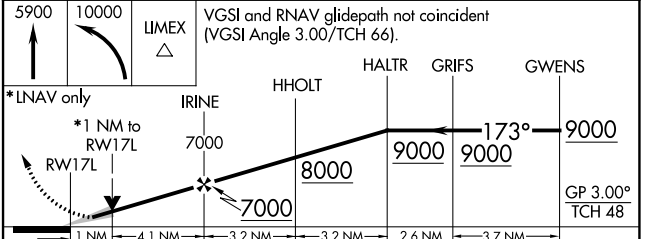
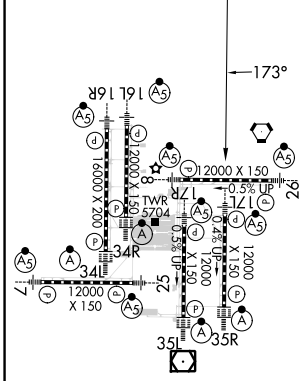
D-ATIS ARR 125.6 379.9 DEP 134.025	DENVER APP CON 119.3 307.3 120.35 379.3 (NORTH) (SOUTH)	DENVER TOWER 132.35 239.275	GND CON 121.85 377.1	CLNC DEL 118.75	CPDLC
--	--	---------------------------------------	--------------------------------	---------------------------	-------

RADAR REQUIRED

Λ 6260



ELEV 5434	D	TDZE 5339
-----------	----------	-----------



CATEGORY	A	B	C	D
LPV DA#	5539/24 200 (200-1/2)			
LNAV/VNAV DA	5648/24 309 (300-1/2)			
LNAV MDA	5700/24 361 (300-1/2)		5700/35 361 (300-5/8)	

HIRL all Rwys
TDZ/CL Rwys 7, 16L, 16R, 17R,
26, 34L, 34R, 35L, 35R

SW-1, 22 FEB 2024 to 21 MAR 2024

SW-1, 22 FEB 2024 to 21 MAR 2024