


RNAV (RNP) Z RWY 34L

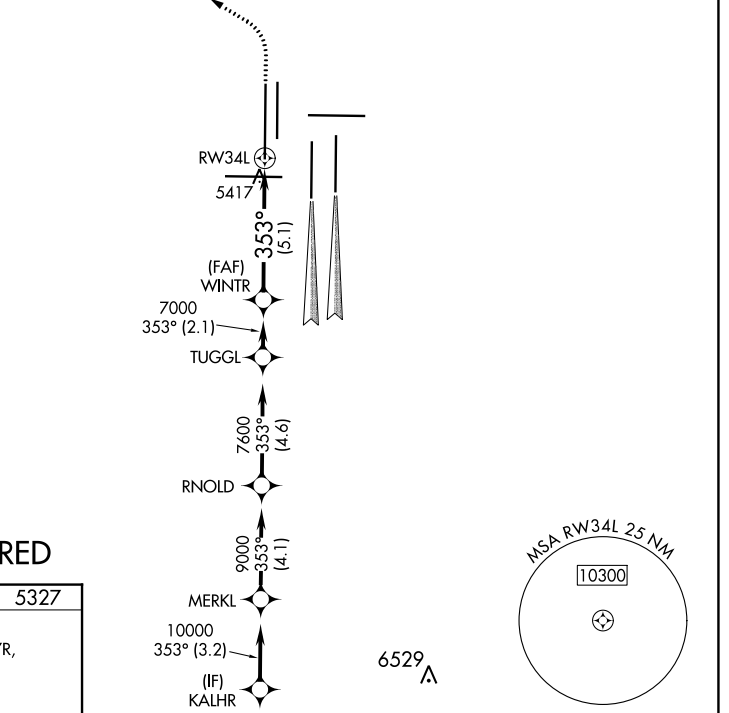
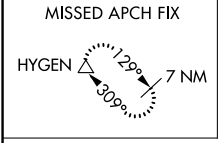
DENVER INTL (DEN)

APP CRS 353°	Rwy Idg 16000
	TDZE 5327
	Apt Elev 5434

▼ For uncompensated Baro-VNAV systems, procedure NA below -25°C (-13°F) or above 48°C (118°F). GPS required. For inoperative ALSF, increase RNP 0.10 all Cats visibility to RVR 4500 and RNP 0.20 all Cats visibility to RVR 6000 and RNP 0.30 all Cats visibility to 1½ mile. Simultaneous approach authorized. Use of FD or AP providing RNAV track guidance required during simultaneous operations.

ALSF-2  MISSED APPROACH: Climb to 5900 then climbing left turn to 10000 direct HYGEM and hold.

D-ATIS ARR 125.6 379.9 DEP 134.025	DENVER APP CON 119.3 307.3 (NORTH) 120.35 379.3 (SOUTH)	DENVER TOWER 135.3 351.95	GND CON 121.35 379.175	CLNC DEL 118.75	CPDLC
--	---	-------------------------------------	----------------------------------	---------------------------	-------




SW-1, 22 FEB 2024 to 21 MAR 2024

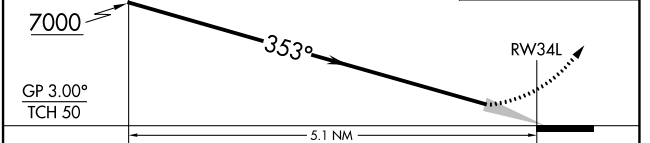
SW-1, 22 FEB 2024 to 21 MAR 2024

RADAR REQUIRED

ELEV 5434	D	TDZE 5327
------------------	----------	------------------

HIRL all Rwys
TDZ/CL Rwys 7, 16L, 16R, 17R, 26, 34L, 34R, 35L, 35R

WINTR VGSi and RNAV glidepath not coincident (VGSi Angle 3.00/TCH 70).
 7000
 5900 10000 HYGEM




CATEGORY	A	B	C	D
RNP 0.10 DA		5587/24	260 (200-½)	
RNP 0.20 DA		5720/45	393 (300-¾)	
RNP 0.30 DA		5782/60	455 (400-1¼)	

AUTHORIZATION REQUIRED