


APP CRS 173°	Rwy Idg 12000
	TDZE 5392
	Apt Elev 5434

RNAV (RNP) Z RWY 17R

DENVER INTL (DEN)

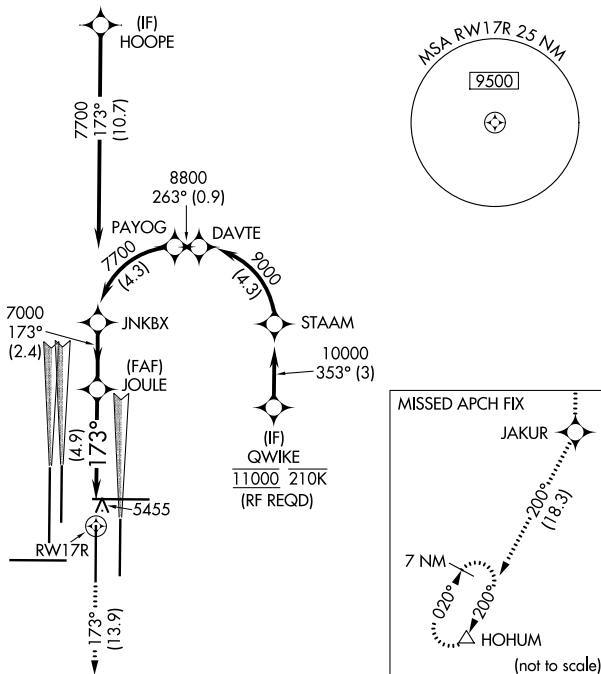
▽ GPS required. For inoperative MALSR, increase RNP 0.10 all Cats visibility to RVR 5000 and RNP 0.30 all Cats visibility to 1 $\frac{1}{2}$ mile. Simultaneous approach authorized. Use of FD or AP providing RNAV track guidance required during simultaneous operations. For uncompensated Baro-VNAV systems, procedure NA below -25°C (-13°F) or above 45°C (114°F).

MALSR

MISSED APPROACH: Climb to 10000 on track 173° to JAKUR and on track 200° to HOHUM and hold.

D-ATIS ARR 125.6 379.9 DEP 134.025	DENVER APP CON 119.3 307.3 (NORTH) 120.35 379.3 (SOUTH)	DENVER TOWER 124.3 322.45	GND CON 121.85 377.1	CLNC DEL 118.75	CPDLC
--	---	-------------------------------------	--------------------------------	---------------------------	-------

RADAR REQUIRED

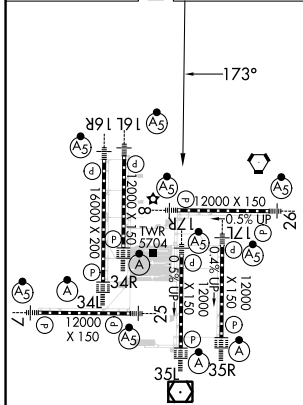
A 6260



SW-1, 22 FEB 2024 to 21 MAR 2024

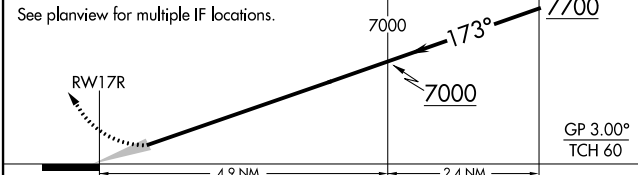
SW-1, 22 FEB 2024 to 21 MAR 2024

ELEV 5434	D	TDZE 5392
-----------	----------	-----------



HIRL all Rwys
 TDZ/CL Rwys 7, 16L, 16R, 17R,
 26, 34L, 34R, 35L, 35R

10000	JAKUR	tr 173°	HOHUM	tr 200°	△	VGSI and RNAV glidepath not coincident (VGSI Angle 3.00°/TCH 69°).	JNKBX
-------	-------	---------	-------	---------	---	--	-------



CATEGORY	A	B	C	D
RNP 0.10 DA	5722/32 330 (300- $\frac{5}{8}$)			
RNP 0.30 DA	5894/60 502 (500-1 $\frac{1}{4}$)			

AUTHORIZATION REQUIRED