


APP CRS 173°	Rwy Idg 12000
	TDZE 5357
	Apt Elev 5434

RNAV (RNP) Z RWY 16L

DENVER INTL (DEN)

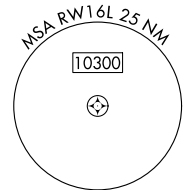
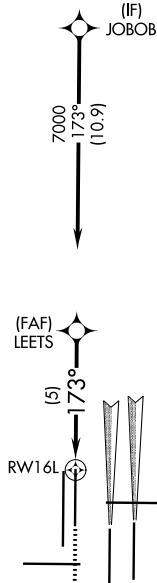
▼ For uncompensated Baro-VNAV systems, procedure NA below -25°C (-13°F) or above 45°C (114°F). GPS required. For inoperative MALSR, increase RNP 0.10 all Cats visibility to RVR 4000 and RNP 0.30 all Cats visibility to RVR 5000. Simultaneous approach authorized. Use of FD or AP providing RNAV track guidance required during simultaneous operations.

MALSR  MISSED APPROACH: Climb to 5900 then climbing right turn to 10000 direct BINBE and hold, continue climb-in-hold to 10000.

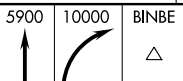
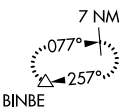
D-ATIS ARR 125.6 379.9 DEP 134.025	DENVER APP CON 119.3 307.3 120.35 379.3 (NORTH) (SOUTH)	DENVER TOWER 135.3 351.95	GND CON 121.35 379.175	CLNC DEL 118.75	CPDLC
--	--	-------------------------------------	----------------------------------	---------------------------	-------

RADAR REQUIRED

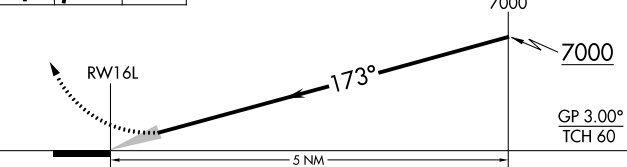
Λ 6260



MISSED APCH FIX

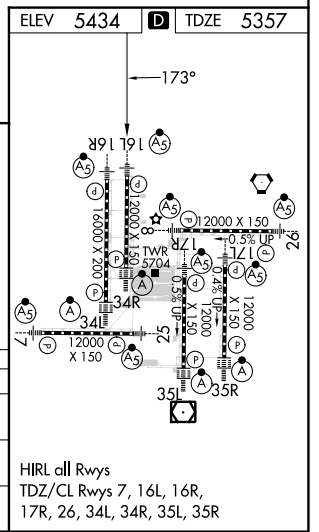


VGSI and RNAV glidepath not coincident (VGSI Angle 3.00/TCH 71).



CATEGORY	A	B	C	D
RNP 0.10 DA	5617/24		260 (200-½)	
RNP 0.30 DA	5683/32		326 (300-¾)	

AUTHORIZATION REQUIRED



SW-1, 22 FEB 2024 to 21 MAR 2024

SW-1, 22 FEB 2024 to 21 MAR 2024