

(N11XX.N11XX3) 23110

AL-9077 (FAA)

DENVER INTL (DEN)  
DENVER, COLORADO

# N11XX THREE ARRIVAL (RNAV) Arrival Routes

RNAV 1 - DME/DME/IRU or GPS

RADAR required for non-GPS equipped aircraft

DENVER APP CON

126.55 269.525

D-ATIS ARR

125.6 379.9

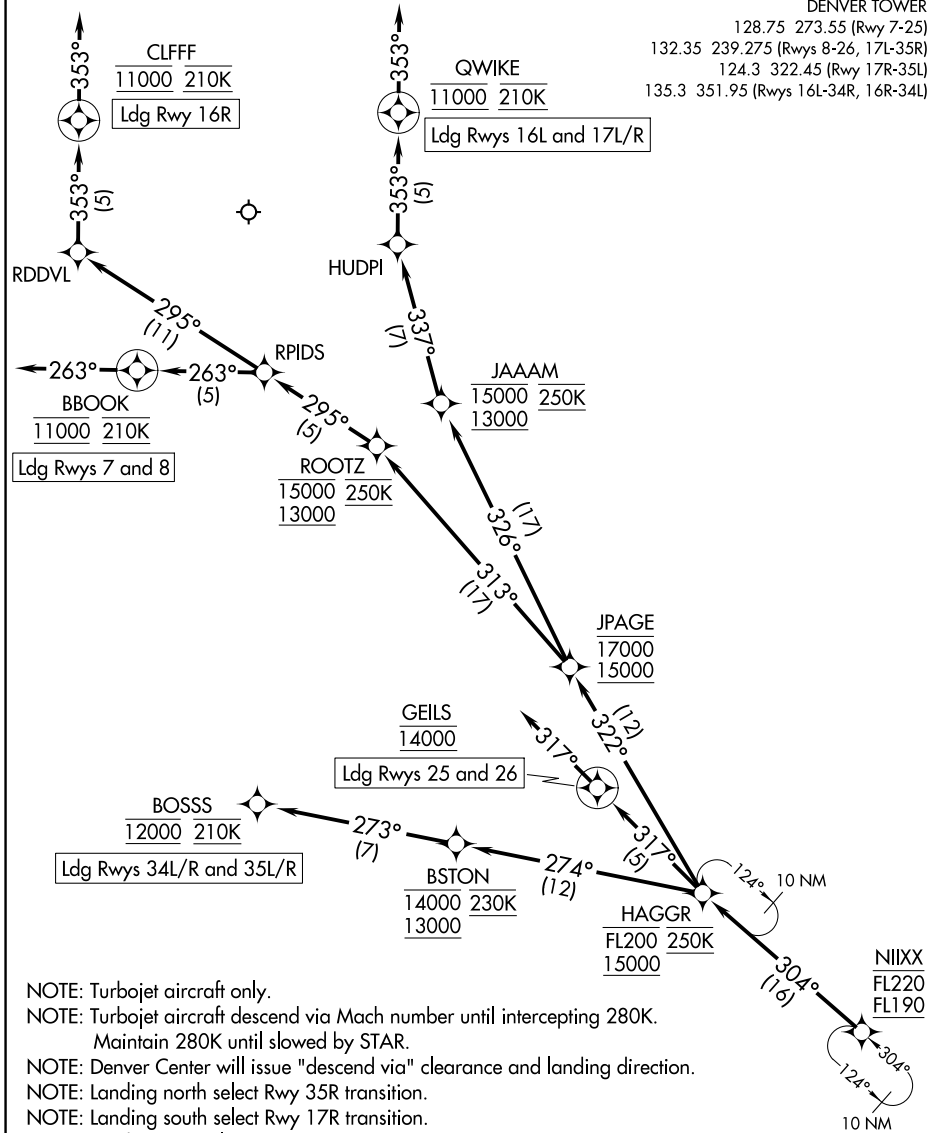
DENVER TOWER

128.75 273.55 (Rwys 7-25)

132.35 239.275 (Rwys 8-26, 17L-35R)

124.3 322.45 (Rwy 17R-35L)

135.3 351.95 (Rwys 16L-34R, 16R-34L)



SW-1, 22 FEB 2024 to 21 MAR 2024

SW-1, 22 FEB 2024 to 21 MAR 2024

- NOTE: Turbojet aircraft only.
- NOTE: Turbojet aircraft descend via Mach number until intercepting 280K. Maintain 280K until slowed by STAR.
- NOTE: Denver Center will issue "descend via" clearance and landing direction.
- NOTE: Landing north select Rwy 35R transition.
- NOTE: Landing south select Rwy 17R transition.
- NOTE: Landing east select Rwy 7 transition.
- NOTE: Landing west select Rwy 26 transition.
- NOTE: Expect runway assignment on initial contact with Denver TRACON.

(NARRATIVE ON FOLLOWING PAGE)

NOTE: Chart not to scale.

# N11XX THREE ARRIVAL (RNAV) Arrival Routes

DENVER, COLORADO  
DENVER INTL (DEN)

(N11XX.N11XX3) 07OCT21