


ILS or LOC RWY 7

DENVER INTL (DEN)

LOC/DME I-DZG 111.55	APP CRS 082°	Rwy Idg TDZE Apt Elev	12000 5352 5434
Chan 52(Y)			

RADAR required for procedure entry.

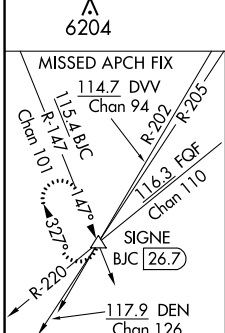
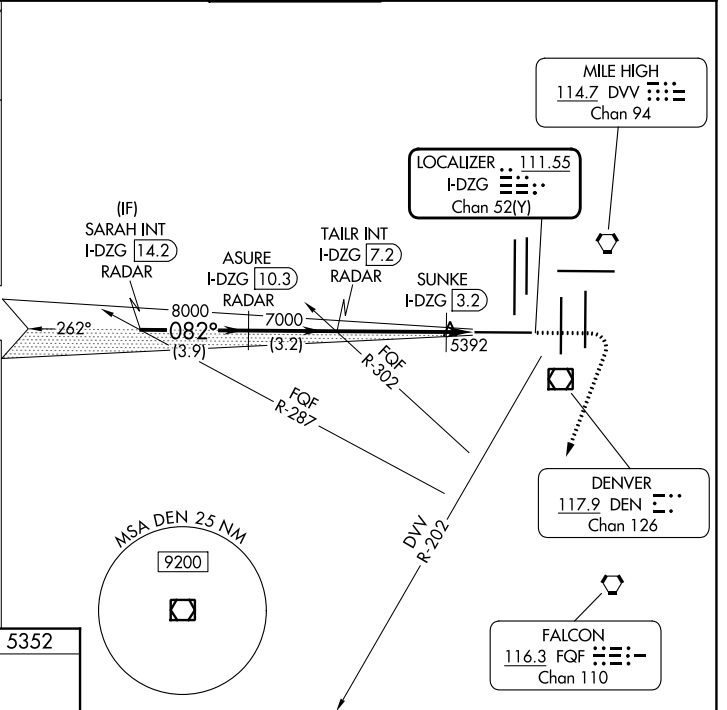
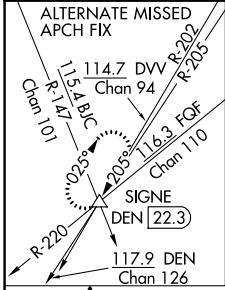
For inop ALS, increase SUNKE fix Cat C/D visibility to RVR 4500. Simultaneous approach authorized.

MALSRL 

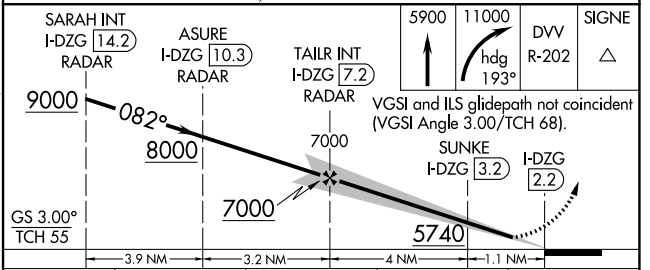
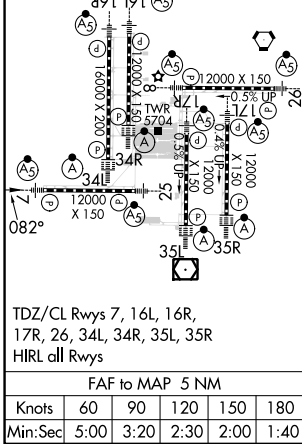
MISSED APPROACH: Climb to 5900 then climbing right turn to 11000 on heading 193° and on DVV VORTAC R-202 to SIGNE INT/BJC 26.7 DME and hold. Continue climb-in-hold to 11000.

D-ATIS ARR 125.6 379.9 DEP 134.025	DENVER APP CON 119.3 307.3 (NORTH)	120.35 379.3 (SOUTH)
--	---	--------------------------------

DENVER TOWER 128.75 273.55	GND CON 121.35 379.175	CLNC DEL 118.75	CPDLC
--------------------------------------	----------------------------------	---------------------------	-------



ELEV 5434	D	TDZE 5352
-----------	---	-----------



CATEGORY	A	B	C	D
S-ILS 7	5552/18 200 (200-½)			
S-LOC 7	5740/24 388 (400-½)		5740/35 388 (400-⅝)	
SUNKE FIX MINIMUMS				
S-LOC 7	5660/24 308 (300-½)			

SW-1, 22 FEB 2024 to 21 MAR 2024

SW-1, 22 FEB 2024 to 21 MAR 2024