

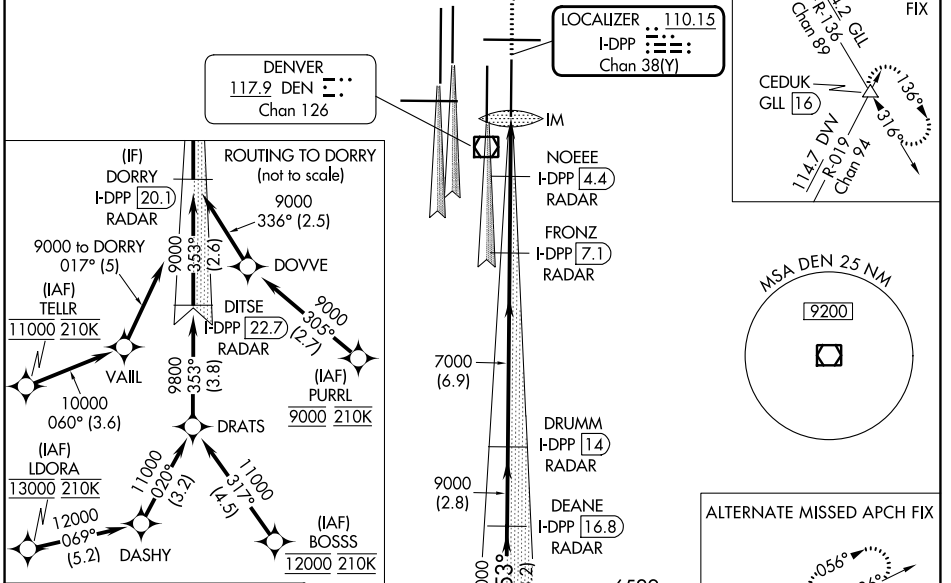
LOC/DME I-DPP 110.15 Chan 38(Y)	APP CRS 353°	Rwy Idg 12000 TDZE 5370 Apt Elev 5434
---	------------------------	--

ILS or LOC RWY 35R

DENVER INTL (DEN)

▽ S-LOC 35R DME or RADAR required. Simultaneous approach authorized with Rwy 34L, Rwy 34R, and Rwy 35L.		ALSF-2 	MISSED APPROACH: Climb to 5800 then climbing right turn to 10000 on heading 048° and on GLL VORTAC R-136 to CEDUK/GLL 16 DME and hold.		
D-ATIS ARR 125.6 379.9 DEP 134.025	DENVER APP CON 119.3 307.3 120.35 379.3 (NORTH) (SOUTH)	DENVER TOWER 132.35 239.275	GND CON 121.85 377.1	CLNC DEL 118.75	CPDLC

RADAR or GPS REQUIRED

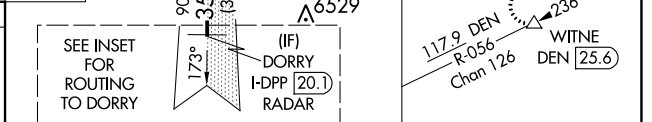
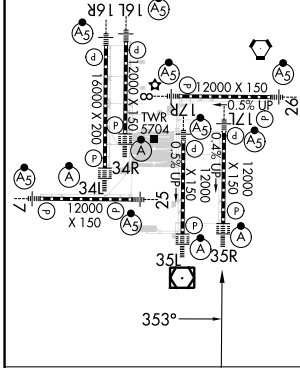


SW-1, 22 FEB 2024 to 21 MAR 2024

SW-1, 22 FEB 2024 to 21 MAR 2024

ELEV 5434 **D** TDZE 5370

HIRL all Rwys
TDZ/CL Rwys 7, 16L, 16R, 17R, 26, 34L,
34R, 35L, 35R



VGSi and ILS glidepath not coincident (VGSi Angle 3.00/TCH 66).		5800	10000	GLL	CEDUK
		↑	hdg 048°	R-136	△
		* LOC only			
DORRY I-DPP [20.1] RADAR	DEANE I-DPP [16.8] RADAR	DRUMM I-DPP [14] RADAR	FRONZ I-DPP [7.1] RADAR	NOEEE I-DPP [4.4] RADAR	
9000	353°	9000	7000	7000	I-DPP* [3.1]
GS 3.00°					IM
TCH 59					I-DPP [2.2]
		*6120			
		3.2 NM	2.8 NM	6.9 NM	2.7 NM
1.3 NM	0.9 NM	0.1 NM			
CATEGORY	A	B	C	D	
S-ILS 35R	5570/18 200 (200-½)				
S-LOC 35R	5740/24	370 (400-½)	5740/35	370 (400-⅝)	