

LOC/DME I-OUF 111.1 Chan 48	APP CRS 353°	Rwy Idg TDZE Apt Elev	12000 5354 5434
--	------------------------	-----------------------------	--

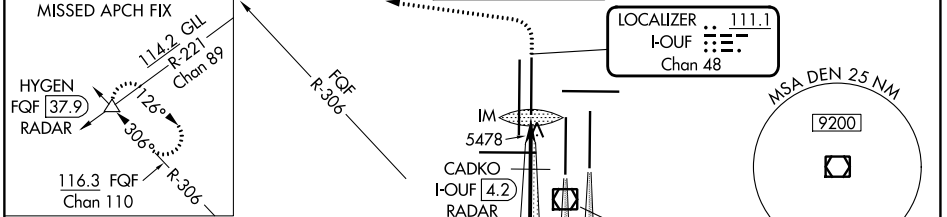
ILS or LOC RWY 34R

DENVER INTL (DEN)

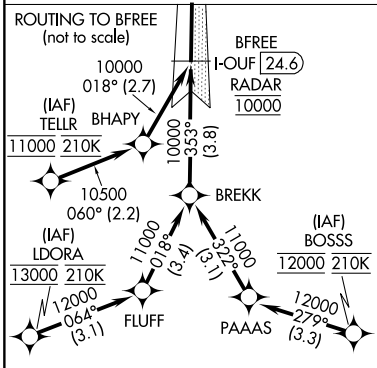
▼ S-LOC 34R DME or RADAR required. Simultaneous approach authorized with Rwy 35L/R. For inoperative ALSF, increase S-LOC Cat C/D visibility to RVR 5500.

ALSF-2 MISSED APPROACH: Climb to 5800 then climbing left turn to 10000 on heading 270° and on FQF VORTAC R-306 to HYGEN/FQF 37.9 DME/RADAR and hold.

D-ATIS ARR 125.6 379.9 DEP 134.025	DENVER APP CON 119.3 307.3 120.35 379.3 (NORTH) (SOUTH)	DENVER TOWER 135.3 351.95	GND CON 121.35 379.175	CLNC DEL 118.75	CPDLC
--	--	-------------------------------------	----------------------------------	---------------------------	-------

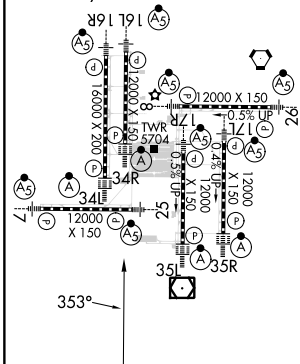


RADAR or GPS REQUIRED

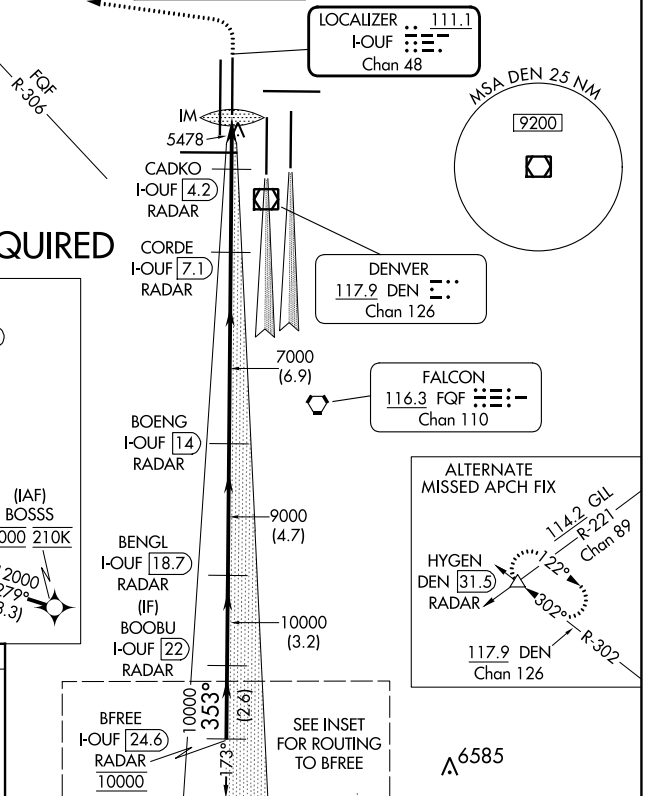


ELEV 5434	D	TDZE 5354
-----------	----------	-----------

TDZ/CL Rwy's 7, 16L, 16R, 17R, 26, 34L, 34R, 35L, 35R
HIRL all Rwy's



FAF to MAP 5 NM					
Knots	60	90	120	150	180
Min:Sec	5:00	3:20	2:30	2:00	1:40

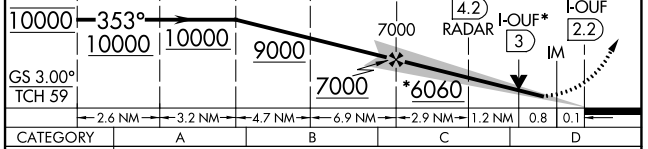


BFREE I-OUF 24.6 RADAR 10000	BOOBU I-OUF 22 RADAR	BENGL I-OUF 18.7 RADAR (IF)	BOENG I-OUF 14 RADAR	CORDE I-OUF 7.1 RADAR	CADKO I-OUF 4.2 RADAR	FQF R-306	HYGEN Δ
------------------------------	----------------------	-----------------------------	----------------------	-----------------------	-----------------------	-----------	----------------

VGSI and ILS glidepath not coincident (VGSI Angle 3.00/TCH 63).

5800 10000
↑ hdg 270°

*LOC only



CATEGORY	A	B	C	D
S-ILS 34R	5554/18 200 (200-1/2)			
S-LOC 34R	5700/24 346 (300-1/2)		5700/30 346 (300-3/4)	

SW-1, 22 FEB 2024 to 21 MAR 2024

SW-1, 22 FEB 2024 to 21 MAR 2024