

ILS or LOC RWY 34L

DENVER INTL (DEN)

LOC/DME I-DXU 111.9 Chan 56	APP CRS 353°	Rwy Idg TDZE Apt Elev 16000 5327 5434
--	------------------------	---

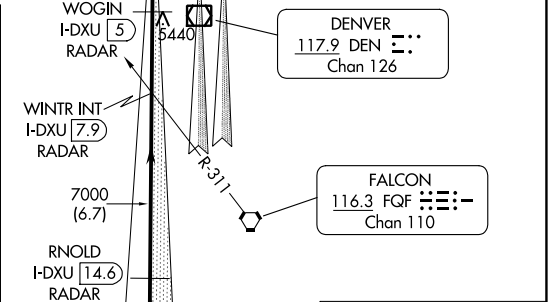
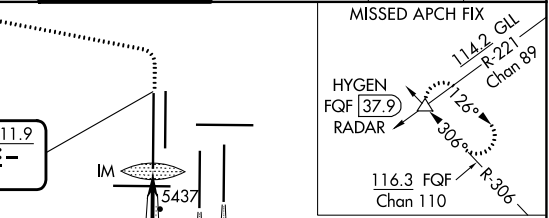
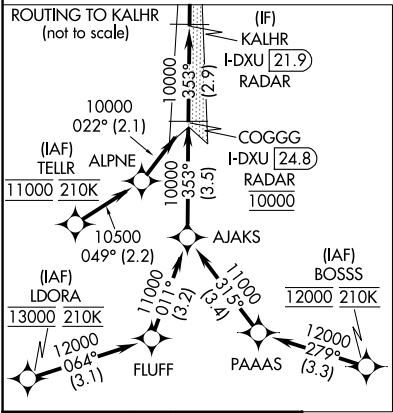
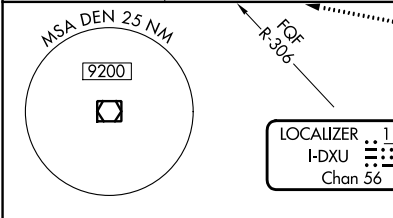
RNAV-1 GPS or RADAR required for procedure entry. From LDORA, BOSS, TELL: RNAV-1 GPS required. DME or RADAR required.

Simultaneous approach authorized with Rwy 35L/R. For inop ALS, increase S-LOC Cat C and D visibility to RVR 5500.

ALSF-2

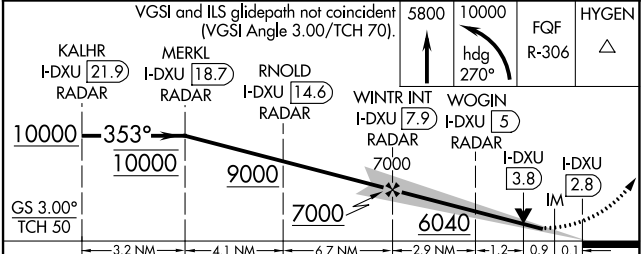
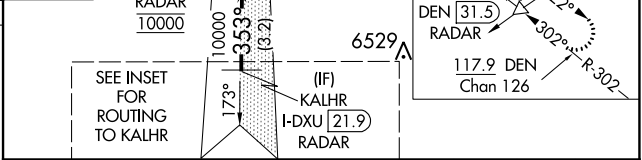
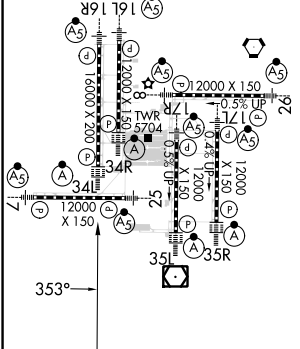
MISSED APPROACH: Climb to 5800 then climbing left turn to 10000 on heading 270° and FQF VORTAC R-306 to HYGEN/FQF 37.9 DME/RADAR and hold.

D-ATIS ARR 125.6 379.9 DEP 134.025	DENVER APP CON 119.3 307.3 120.35 379.3 (NORTH) (SOUTH)	DENVER TOWER 135.3 351.95	GND CON 121.35 379.175	CLNC DEL 118.75	CPDLC
--	---	-------------------------------------	----------------------------------	---------------------------	-------



ELEV 5434 TDZE 5327

HIRL all Rwy's
TDZ/CL Rwy's 7, 16L, 16R, 17R, 26, 34L, 34R, 35L, 35R



CATEGORY	A	B	C	D
S-ILS 34L	5527/18 200 (100-1/2)			
S-LOC 34L	5700/24 373 (300-1/2)		5700/35 373 (300-3/8)	

FAF to MAP 5.1 NM

Knots	60	90	120	150	180
Min:Sec	5:06	3:24	2:33	2:02	1:42

SW-1, 22 FEB 2024 to 21 MAR 2024

SW-1, 22 FEB 2024 to 21 MAR 2024