

LOC/DME I-ERP 111.55 Chan 52(Y)	APP CRS 263°	Rwy Idg 12000 TDZE 5355 Apt Elev 5434
---	------------------------	--

ILS or LOC RWY 25

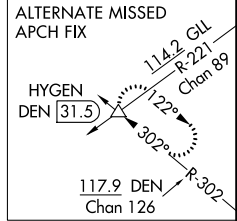
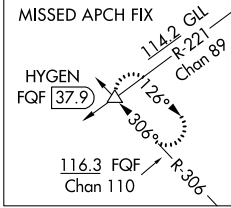
DENVER INTL (DEN)

Simultaneous approach authorized with Rwy 26. For inoperative MALSR, increase S-LOC 25 Cat C and D visibility to RVR 5500. **RVR 1800 authorized with use of FD or AP or HUD to DA.

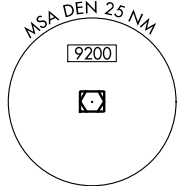


MISSED APPROACH: Climb to 10000 on heading 263° and on FQF VORTAC R-306 to HYGEN INT/FQF 37.9 DME and hold.

D-ATIS ARR 125.6 379.9 DEP 134.025	DENVER APP CON 119.3 307.3 (NORTH) 120.35 379.3 (SOUTH)	DENVER TOWER 128.75 273.55	GND CON 121.35 379.175	CLNC DEL 118.75	CPDLC
--	---	--------------------------------------	----------------------------------	---------------------------	-------



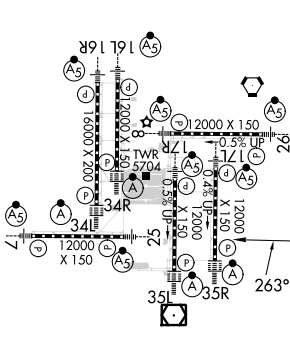
LOCALIZER .. **111.55**
I-ERP **---**
Chan **52(Y)**



DENVER
117.9 DEN **---**
Chan **126**

FALCON
116.3 FQF **---**
Chan **110**

ELEV 5434 **D** TDZE 5355



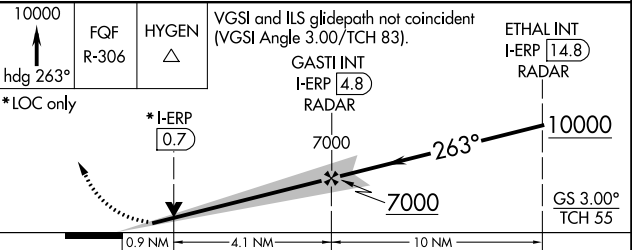
HIRL all Rws
TDZ/CL Rws 7, 16L, 16R, 17R,
26, 34L, 34R, 35L, 35R

FAF to MAP 5 NM

Knots	60	90	120	150	180
Min:Sec	5:00	3:20	2:30	2:00	1:40

△ 6270 ±

RADAR REQUIRED



CATEGORY	A	B	C	D
S-ILS 25 **	5555/24 200 (200-½)			
S-LOC 25	5720/24	365 (300-½)	5720/35	365 (300-⅝)