


ILS or LOC RWY 16R

DENVER INTL (DEN)

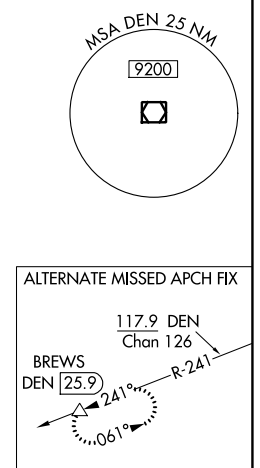
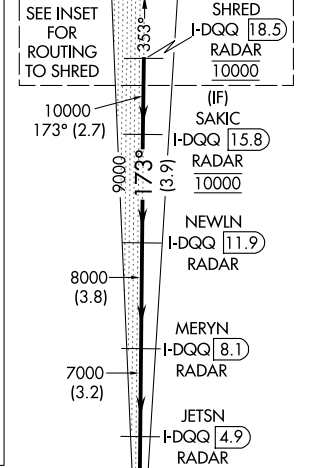
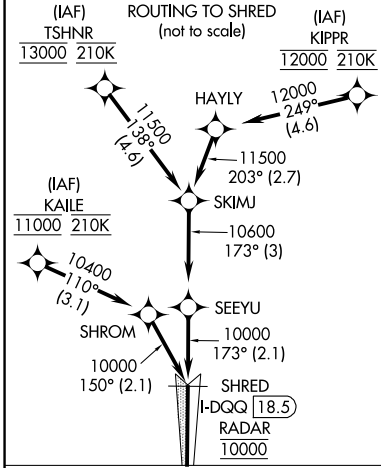
LOC/DME I-DQQ 111.9 Chan 56	APP CRS 173°	Rwy Idg 16000 TDZE 5326 Apt Elev 5434
---	------------------------	--

⚠ For inoperative MALSR, increase S-LOC Cat C/D visibility to RVR 4500. Simultaneous approach authorized with Rwy 17L and 17R. DME required.

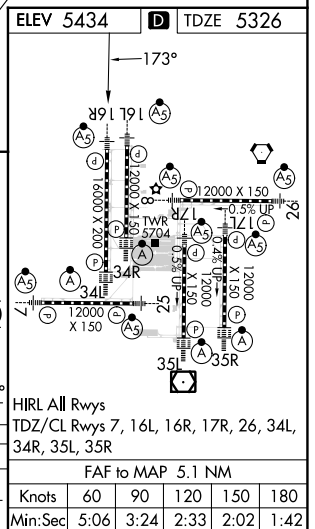
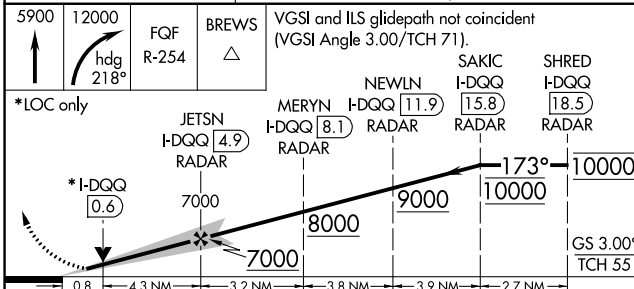
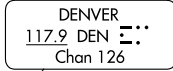
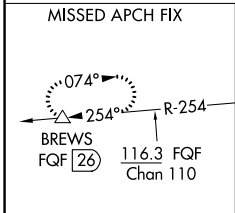
MALSR 

MISSED APPROACH: Climb to 5900 then climbing right turn to 12000 on heading 218° and on FGF VORTAC R-254 to BREWS/FQF 26 DME and hold.

D-ATIS ARR 125.6 379.9 DEF 134.025	DENVER APP CON 119.3 307.3 (NORTH) 120.35 379.3 (SOUTH)	DENVER TOWER 135.3 351.95	GND CON 121.35 379.175	CLNC DEL 118.75	CPDLC
--	---	-------------------------------------	----------------------------------	---------------------------	-------



RADAR or GPS REQUIRED



CATEGORY	A	B	C	D
S-ILS 16R	5526/18 200 (100-½)			
S-LOC 16R	5640/24 314 (300-½)			

SW-1, 22 FEB 2024 to 21 MAR 2024

SW-1, 22 FEB 2024 to 21 MAR 2024