


LOC/DME I-LTT 111.1 Chan 48	APP CRS 173°	Rwy Idg TDZE Apt Elev	12000 5357 5434
---	------------------------	-----------------------------	--

ILS or LOC RWY 16L

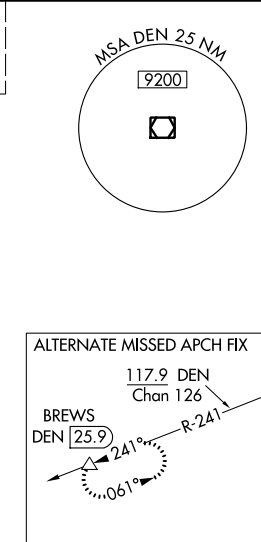
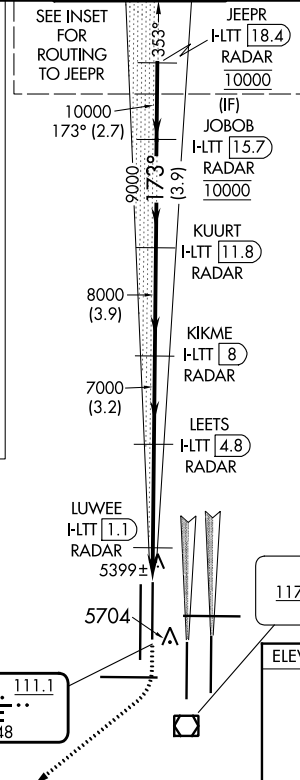
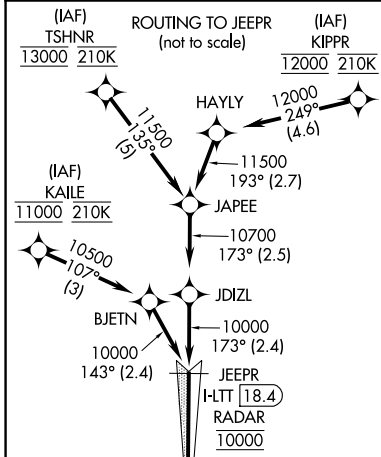
DENVER INTL (DEN)

Simultaneous approach authorized with Rwy 17L/17R. DME required. S-LOC 16L DME or RADAR required. For inoperative MALS, increase S-LOC Cat C/D visibility to RVR 4500.

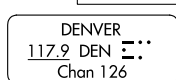
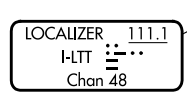
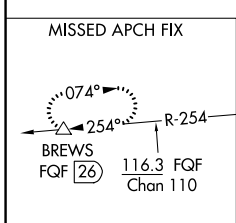
MALS 

MISSED APPROACH: Climb to 5900 then climbing right turn to 12000 on heading 218° and on FGF VORTAC R-254 to BREWS/FGF 26 DME and hold.

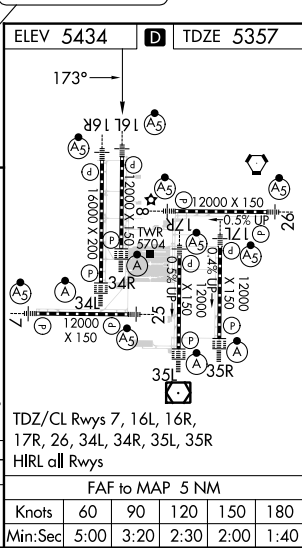
D-ATIS ARR 125.6 379.9 DEP 134.025	DENVER APP CON 119.3 307.3 (NORTH)	DENVER APP CON 120.35 379.3 (SOUTH)	DENVER TOWER 135.3 351.95	GND CON 121.35 379.175	CLNC DEL 118.75	CPDLC
--	---	--	-------------------------------------	----------------------------------	---------------------------	-------



RADAR or GPS REQUIRED



5900	12000	FGF R-254	BREWS △	VGSi and ILS glidepath not coincident (VGSi Angle 3.00/TCH 71).
*LOC only		LEETS I-LTT 4.8	KIKME I-LTT 8	CUURT I-LTT 11.8
I-LTT 0.2	I-LTT 0.6	LUVWEE I-LTT 1.1	RADAR	RADAR
0.8	0.5	3.7 NM	3.2 NM	3.9 NM
CATEGORY	A	B	C	D
S-ILS 16L	5557/18 200 (200-½)			
S-LOC 16L	5660/24 303 (300-½)			



SW-1, 22 FEB 2024 to 21 MAR 2024

SW-1, 22 FEB 2024 to 21 MAR 2024