

LOC/DME I-DPP 110.15 Chan 38(Y)	APP CRS 353°	Rwy ldg 12000 TDZE 5370 Apt Elev 5434
---	------------------------	--

ILS RWY 35R (CAT II & III)

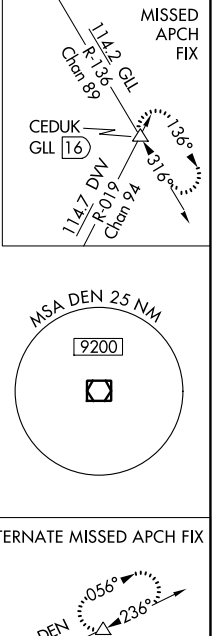
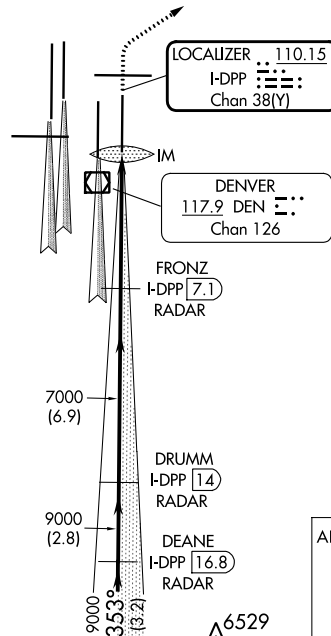
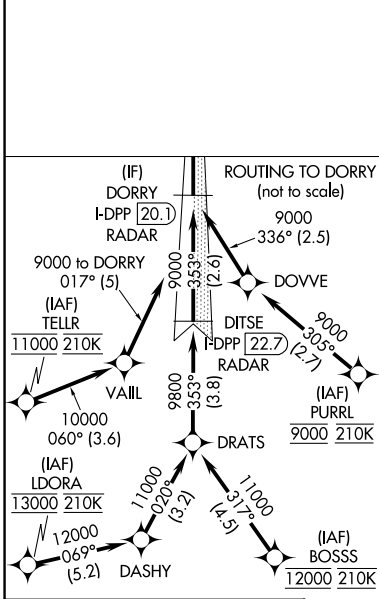
DENVER INTL (DEN)

Simultaneous approach authorized with Rwy 34L, Rwy 34R, and Rwy 35L. CAT II: RVR 1000 authorized with specific OPSPEC, MSPEC, or LOA approval and use of autoland or HUD to touchdown.

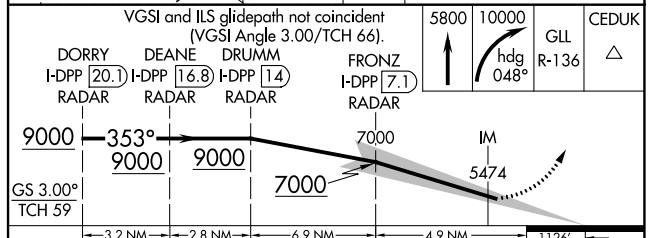
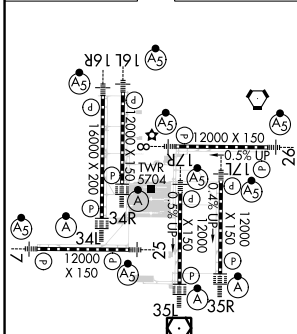
ALSf-2 MISSED APPROACH: Climb to 5800 then climbing right turn to 10000 on heading 048° and on GLL VORTAC R-136 to CEDUK/GLL 16 DME and hold.

D-ATIS ARR 125.6 379.9 DEP 134.025	DENVER APP CON 119.3 307.3 120.35 379.3 (NORTH) (SOUTH)	DENVER TOWER 132.35 239.275	GND CON 121.85 377.1	CLNC DEL 118.75	CPDLC
--	--	---------------------------------------	--------------------------------	---------------------------	-------

RADAR or GPS REQUIRED



ELEV 5434 TDZE 5370



CATEGORY	A	B	C	D
S-ILS 35R	CAT II RA 111/12 100 DA 5470			
S-ILS 35R	CAT IIIa RVR 07			
S-ILS 35R	CAT IIIb RVR 03			
S-ILS 35R	CAT IIIc NA			

CATEGORY II & III ILS - SPECIAL AIRCREW & AIRCRAFT CERTIFICATION REQUIRED

HIRL all Rwys
TDZ/CL Rwys 7, 16L, 16R, 17R, 26, 34L, 34R, 35L, 35R

SW-1, 22 FEB 2024 to 21 MAR 2024

SW-1, 22 FEB 2024 to 21 MAR 2024