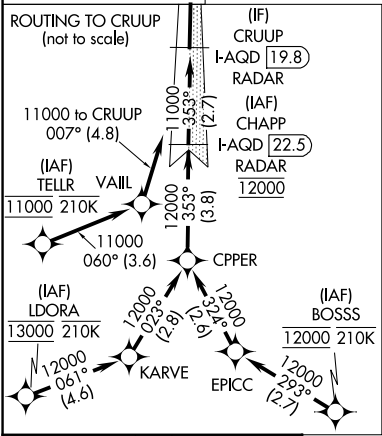
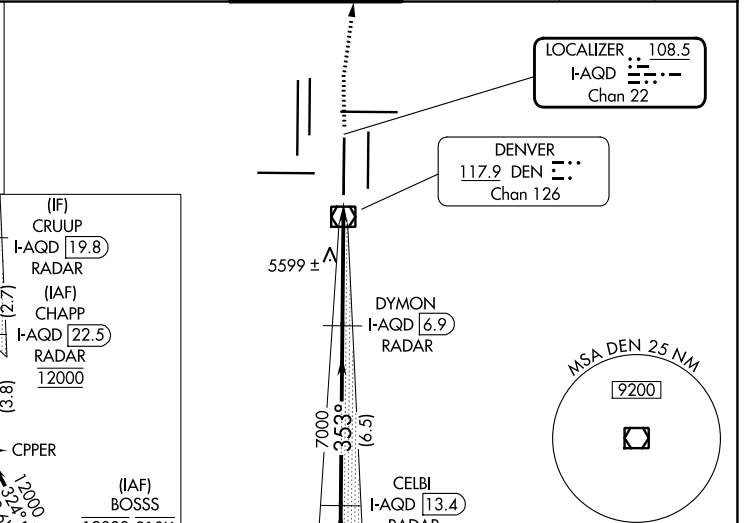
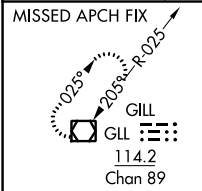


LOC/DME I-AQD <b>108.5</b> Chan <b>22</b>	APP CRS <b>353°</b>	Rwy Idg <b>12000</b> TDZE <b>5434</b> Apt Elev <b>5434</b>
---	------------------------	--

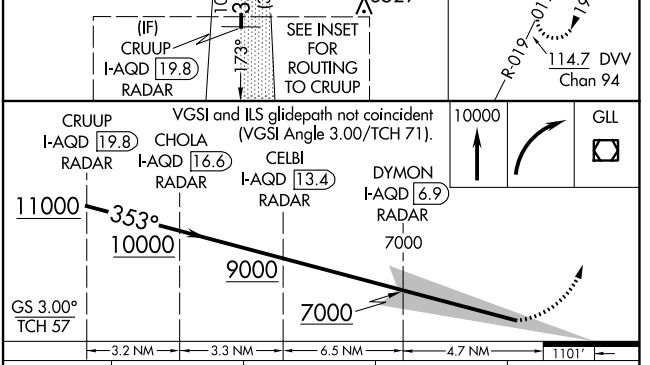
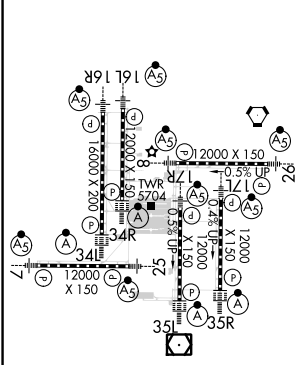
# ILS RWY 35L (SA CAT I)

DENVER INTL (DEN)

RNAV 1-GPS or RADAR required for procedure entry.		ALS-F2 	MISSED APPROACH: Climb to 10000 then right turn direct GLL VOR/DME and hold.		
D-ATIS ARR <b>125.6 379.9</b> DEP <b>134.025</b>	DENVER APP CON <b>119.3 307.3 120.35 379.3</b> (NORTH) (SOUTH)	DENVER TOWER <b>124.3 322.45</b>	GND CON <b>121.85 377.1</b>	CLNC DEL <b>118.75</b>	CPDLC



ELEV 5434	<b>D</b>	TDZE 5434
-----------	----------	-----------



CATEGORY	A	B	C	D
S-ILS 35L	RA 165/14 150 DA 5584			
<b>SA CATEGORY I ILS - SPECIAL AIRCREW &amp; AIRCRAFT CERTIFICATION REQUIRED</b>				

SW-1, 22 FEB 2024 to 21 MAR 2024

SW-1, 22 FEB 2024 to 21 MAR 2024