

LOC/DME I-AQD 108.5 Chan 22	APP CRS 353°	Rwy Idg 12000 TDZE 5434 Apt Elev 5434
---	------------------------	--

ILS RWY 35L (CAT II & III)

DENVER INTL (DEN)

RNAV 1-GPS or RADAR required for procedure entry.

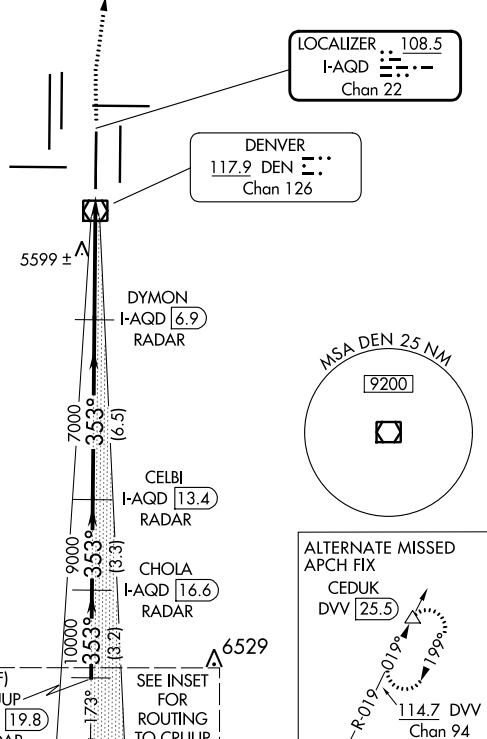
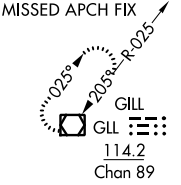
ALSF-2

MISSED APPROACH: Climb to 10000 then right turn direct GLL VOR/DME and hold.

Simultaneous approach authorized. CAT II: RVR 1000 authorized with specific OPSPEC, MSPEC, or LOA approval and use of autoland or HUD to touchdown.

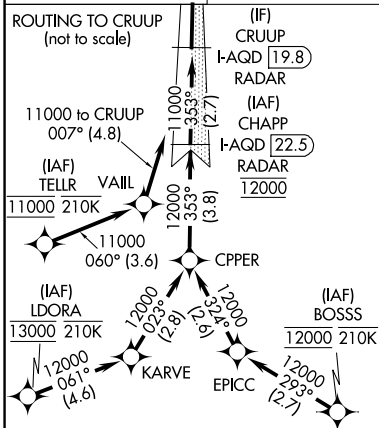
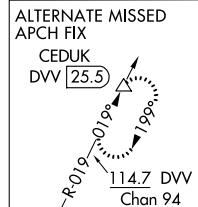
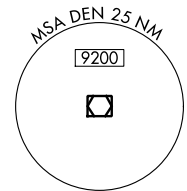


D-ATIS ARR 125.6 379.9 DEP 134.025	DENVER APP CON 119.3 307.3 (NORTH)	120.35 379.3 (SOUTH)	DENVER TOWER 124.3 322.45	GND CON 121.85 377.1	CLNC DEL 118.75	CPDLC
--	---	--------------------------------	-------------------------------------	--------------------------------	---------------------------	-------

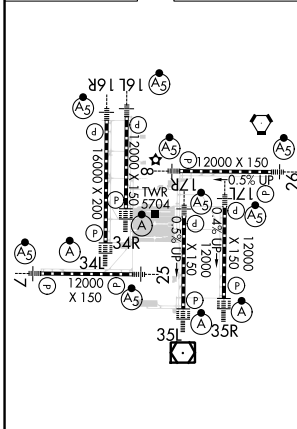


LOCALIZER 108.5
I-AQD
Chan 22

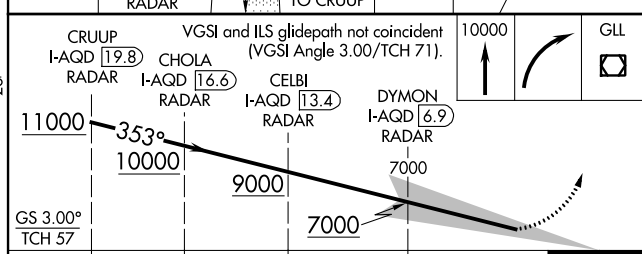
DENVER 117.9 DEN
Chan 126



ELEV 5434 **D** TDZE 5434



HIRL all Rwys
TDZ/CL Rwys 7, 16L, 16R, 17R, 26, 34L, 34R, 35L, 35R



CATEGORY	A	B	C	D
S-ILS 35L	CAT II RA 115/12 100 DA 5534			
S-ILS 35L	CAT III RVR 03			

CATEGORY II & III ILS - SPECIAL AIRCREW & AIRCRAFT CERTIFICATION REQUIRED

SW-1, 22 FEB 2024 to 21 MAR 2024

SW-1, 22 FEB 2024 to 21 MAR 2024