

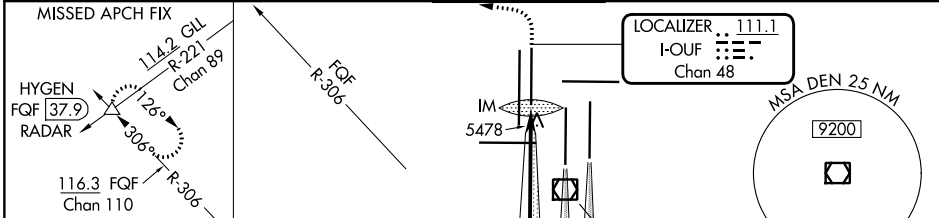
LOC/DME I-OUF <b>111.1</b>	APP CRS <b>353°</b>	Rwy Idg TDZE Apt Elev <b>12000</b> <b>5354</b> <b>5434</b>
Chan <b>48</b>		

# ILS RWY 34R (CAT II & III)

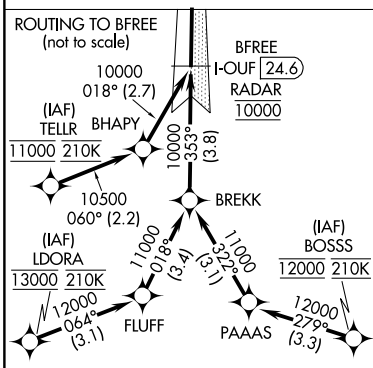
DENVER INTL (DEN)

Simultaneous approach authorized with Rwy 35L/R.  
 CAT II: RVR 1000 authorized with specific OPSPEC, MSPEC or LOA approval and use of autoland or HUD to touchdown.  
 ALSF-2 MISSED APPROACH: Climb to 5800 then climbing left turn to 10000 on heading 270° and on FGF VORTAC R-306 to HYGEN/FQF 37.9 DME/RADAR and hold.

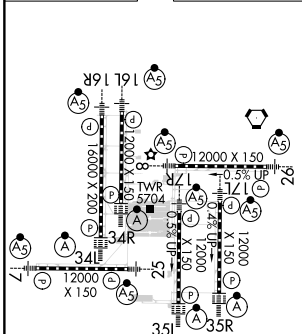
D-ATIS ARR <b>125.6 379.9</b> DEP <b>134.025</b>	DENVER APP CON <b>119.3 307.3 120.35 379.3</b> (NORTH) (SOUTH)	DENVER TOWER <b>135.3 351.95</b>	GND CON <b>121.35 379.175</b>	CLNC DEL <b>118.75</b>	CPDLC
--	--	-------------------------------------	----------------------------------	---------------------------	-------



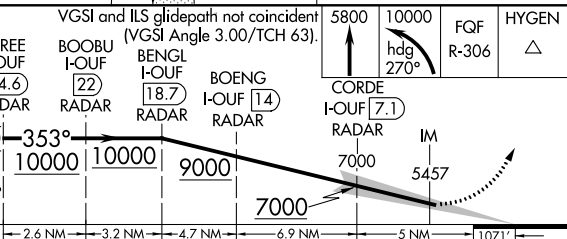
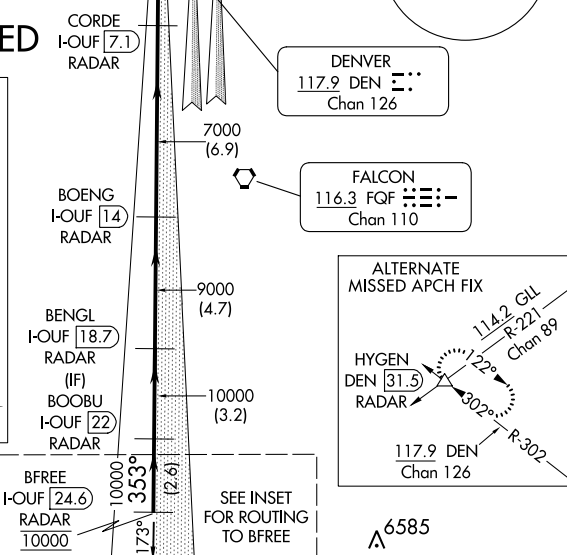
## RADAR or GPS REQUIRED



ELEV 5434	<b>D</b>	TDZE 5354
-----------	----------	-----------



HIRL all Rwys TDZ/CL Rwys 7, 16L, 16R, 17R, 26, 34L, 34R, 35L, 35R
---



CATEGORY	A	B	C	D
S-ILS 34R	CAT II RA 155/12 100 DA 5454			
S-ILS 34R	CAT IIIa RVR 07			
S-ILS 34R	CAT IIIb RVR 03			
S-ILS 34R	CAT IIIc NA			

## CATEGORY II & III ILS - SPECIAL AIRCREW & AIRCRAFT CERTIFICATION REQUIRED

SW-1, 22 FEB 2024 to 21 MAR 2024

SW-1, 22 FEB 2024 to 21 MAR 2024