

# FLATI THREE ARRIVAL (RNAV) Transition Routes

SW-1, 22 FEB 2024 to 21 MAR 2024

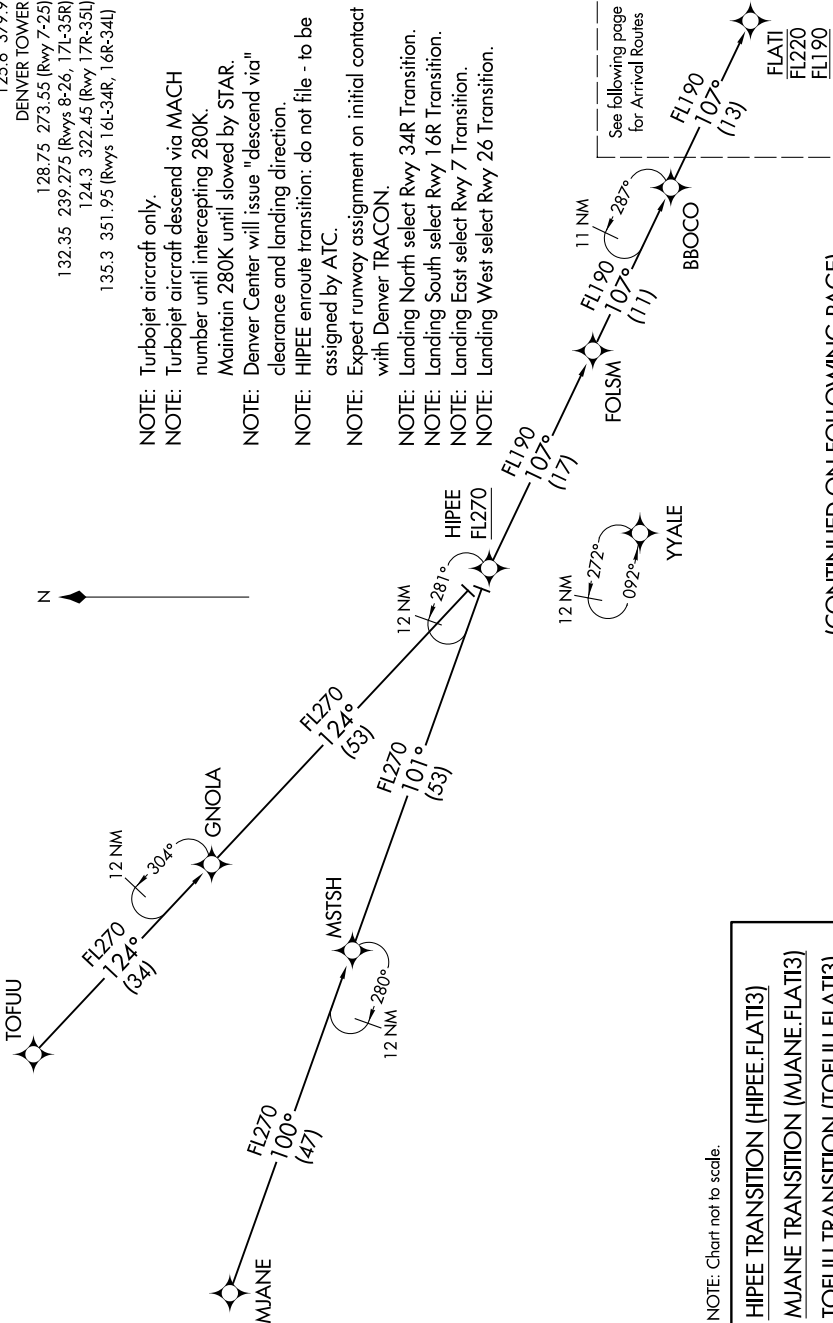
RNAV 1-DME/DME/IRU or GPS

RADAR required for non-GPS equipped aircraft

DENVER APP CON  
119.3 307.3  
D-ATIS ARR  
125.6 379.9  
DENVER TOWER  
128.75 273.55 (Rwy 7-25)  
132.35 239.275 (Rwys 8-26, 17L-35R)  
124.3 322.45 (Rwy 17R-35L)  
135.3 351.95 (Rwys 16L-34R, 16R-34L)

- NOTE: Turbojet aircraft only.
- NOTE: Turbojet aircraft descend via MACH number until intercepting 280K. Maintain 280K until slowed by STAR. Denver Center will issue "descend via" clearance and landing direction.
- NOTE: HIPEE enroute transition: do not file - to be assigned by ATC.
- NOTE: Expect runway assignment on initial contact with Denver TRACON.
- NOTE: Landing North select Rwy 34R Transition.
- NOTE: Landing South select Rwy 16R Transition.
- NOTE: Landing East select Rwy 7 Transition.
- NOTE: Landing West select Rwy 26 Transition.

See following page for Arrival Routes



NOTE: Chart not to scale.

- HIPEE TRANSITION (HIPEE.FLATI3)
- MJANE TRANSITION (MJANE.FLATI3)
- TOFUU TRANSITION (TOFUU.FLATI3)

(CONTINUED ON FOLLOWING PAGE)

SW-1, 22 FEB 2024 to 21 MAR 2024