

# EPKEE SEVEN DEPARTURE (RNAV)

AL-9077 (FAA)

DENVER INTL (DEN)  
DENVER, COLORADO

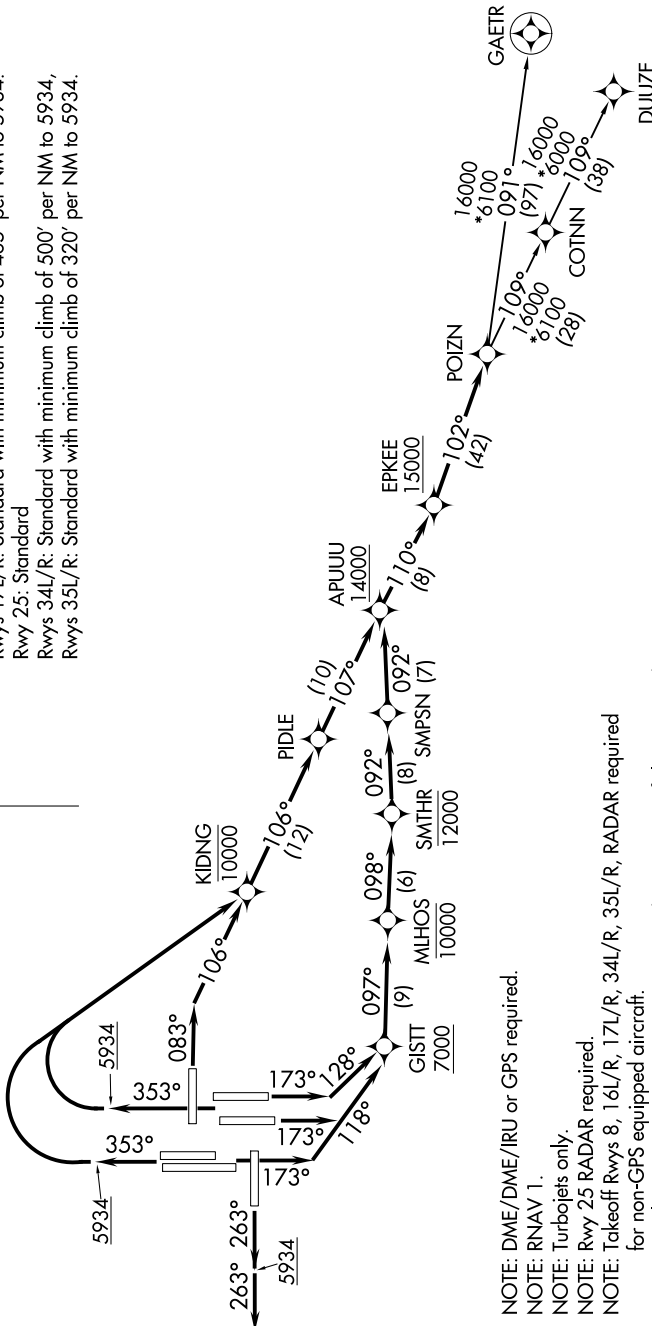
SW-1, 22 FEB 2024 to 21 MAR 2024

D-ATIS DEP  
134.025  
CLNC DEL  
118.75  
CPDLC  
DENVER DEP CON  
128.25 371.95

**TOP ALTITUDE:  
FL230**

### TAKEOFF MINIMUMS

- Rwys 7, 26: NA-ATC.
- Rwys 8, 16L: Standard with minimum climb of 400' per NM to 5934.
- Rwy 16R: Standard with minimum climb of 450' per NM to 5934.
- Rwys 17L/R: Standard with minimum climb of 465' per NM to 5934.
- Rwy 25: Standard
- Rwys 34L/R: Standard with minimum climb of 500' per NM to 5934.
- Rwys 35L/R: Standard with minimum climb of 320' per NM to 5934.



- NOTE: DME/DME/IRU or GPS required.
- NOTE: RNAV 1.
- NOTE: Turbojets only.
- NOTE: Rwy 25 RADAR required.
- NOTE: Takeoff Rwys 8, 16L/R, 17L/R, 34L/R, 35L/R, RADAR required for non-GPS equipped aircraft.
- NOTE: Accelerate to 250K or greater upon reaching 10000. If slower speed is required to meet crossing restrictions advise CLNC DEL prior to taxi.

(NARRATIVE ON FOLLOWING PAGE)

NOTE: Chart not to scale.

# EPKEE SEVEN DEPARTURE (RNAV)

DENVER, COLORADO  
DENVER INTL (DEN)

SW-1, 22 FEB 2024 to 21 MAR 2024