

TIN CITY, ALASKA

RNAV (GPS) RWY 34

APCH CRS	Rwy ldg	4702
345°	TDZE	273
	Arpt Elev	273

AL-2334 [USAF]

TIN CITY LRSS (PATC)

RNP APCH - GPS required.

▼ Night operations not authorized
 *Circling not authorized W of runway 16/34

MISSED APPROACH: Climb to 1500 then climbing right turn to 4000 direct JAGMA and hold.

ANCHORAGE CENTER
133.3 290.4

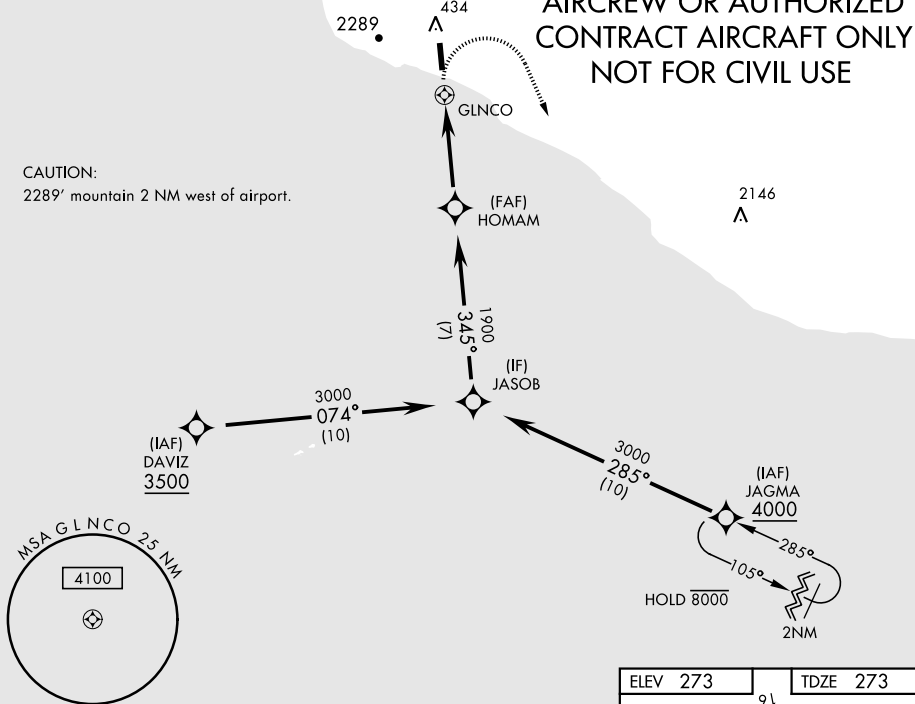
TIN CITY RCO (NOME RADIO)
122.6

UNICOM
126.2 (CTAF)

Uncontrolled airspace below 700' AGL within 7 NM of Tin City airport.
 Circling visibility reduction by helicopters NA.

**MILITARY CERTIFIED
 AIRCREW OR AUTHORIZED
 CONTRACT AIRCRAFT ONLY
 NOT FOR CIVIL USE**

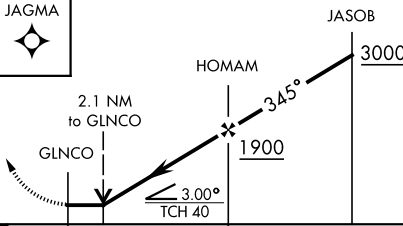
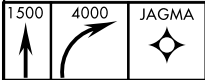
CAUTION:
 2289' mountain 2 NM west of airport.



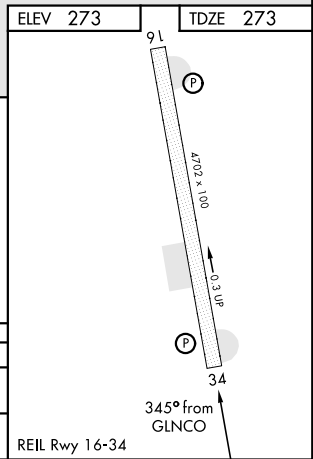
AK, 25 JAN 2024 to 21 MAR 2024

AK, 25 JAN 2024 to 21 MAR 2024

EMERG SAFE ALT 100 NM 7000



CATEGORY	A	B	C	D
LNAV MDA	1260-1¼ 987 (1000-1¼)	1260-1½ 987 (1000-1½)	1280-3 1007 (1100-3)	NA
CIRCLING*	1260-1¼ 987 (1000-1¼)	1260-1½ 987 (1000-1½)	1280-3 1007 (1100-3)	NA



TIN CITY, ALASKA

65° 34'N-167° 55'W

TIN CITY LRSS (PATC)

Amdt 2 02DEC21
TERPS

RNAV (GPS) RWY 34