

JEKLI TWO DEPARTURE (OBSTACLE) (RNAV) (JEKLI2•DELRY)

TIN CITY, ALASKA

UNICOM (CTAF) AL-2334 [USAF] RNAV1- GPS
 126.2
 TIN CITY RCO (NOME RADIO)
 122.6
 ANCHORAGE CENTER
 133.3 290.4

Rwy	Knots	60	120	180	240	300	360
34	V/V(fpm)	357	714	1071	1428	1785	2142

Minimum Climb Rate to 800

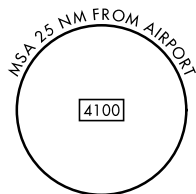
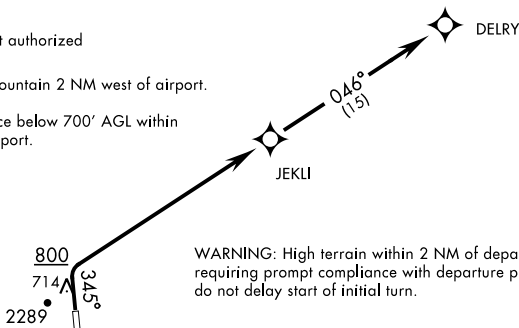
MILITARY CERTIFIED
 AIRCREW OR AUTHORIZED
 CONTRACT AIRCRAFT ONLY

NOT FOR CIVIL USE

Night operations not authorized

CAUTION: 2289' mountain 2 NM west of airport.

Uncontrolled airspace below 700' AGL within 7 NM of Tin City airport.



AK, 25 JAN 2024 to 21 MAR 2024

AK, 25 JAN 2024 to 21 MAR 2024



DEPARTURE ROUTE DESCRIPTION

TAKEOFF RWY 16: NA

TAKEOFF RWY 34: Climb heading 345° to 800, then climbing right turn direct JEKLI, then track 046° to DELRY. Maintain 7000 or ATC assigned altitude.