

RNAV (RNP) Z RWY 22L

JOHN F KENNEDY INTL (JFK)

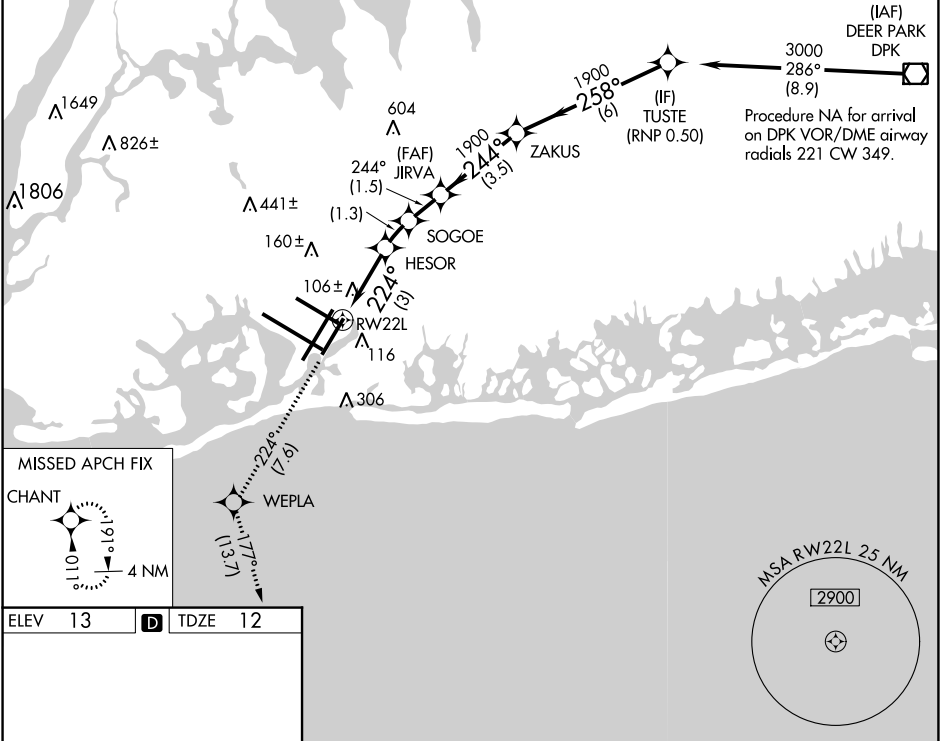
APP CRS	Rwy Idg	8400
224°	TDZE	12
	Apt Elev	13

RF required. RNP AR APCH.

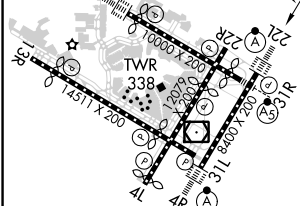
▼ For uncompensated Baro-VNAV systems, procedure NA below -12°C (11°F) or above 54°C (130°F). Simultaneous approach authorized. Use of FD or AP providing RNAV track guidance required during simultaneous operations. For inop ALS, increase RNP 0.20 all Cats visibility to RVR 5500, increase RNP 0.30 all Cats visibility to RVR 6000.

ALSIF-2 	MISSED APPROACH: Climb to 3000 on track 224° to WEPLA and on track 177° to CHANT and hold.		

D-ATIS (ARR/DEP) 128.725 117.7 115.4	NEW YORK APP CON 128.125 269.0	KENNEDY TOWER Rwys 4R/22L and 13L/31R 119.1 281.55 Rwys 4L/22R and 13R/31L 123.9 281.55	GND CON 121.9 348.6	CLNC DEL 135.05 348.6	CPDLC
--	--	---	-------------------------------	---------------------------------	-------

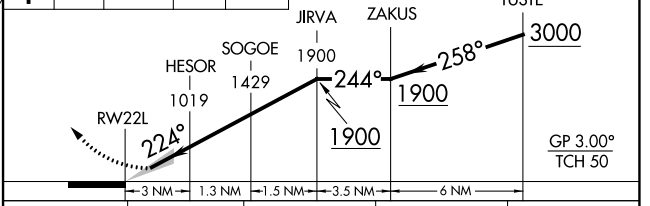


ELEV 13	D	TDZE 12
---------	----------	---------



RLS Rwys 13L and 13R
HIRL all Rwys
TDZ/CL Rwys 4L, 4R, 13L, 22L and 31R

3000	↑ tr 224°	WEPLA	↑ tr 177°	CHANT	VGSI and RNAV glidepath not coincident (VGSI Angle 3.00/TCH 66).
------	-----------	-------	-----------	-------	--



CATEGORY	A	B	C	D
RNP 0.20 DA		361/40	349 (400-¾)	
RNP 0.30 DA		421/40	409 (500-¾)	

AUTHORIZATION REQUIRED