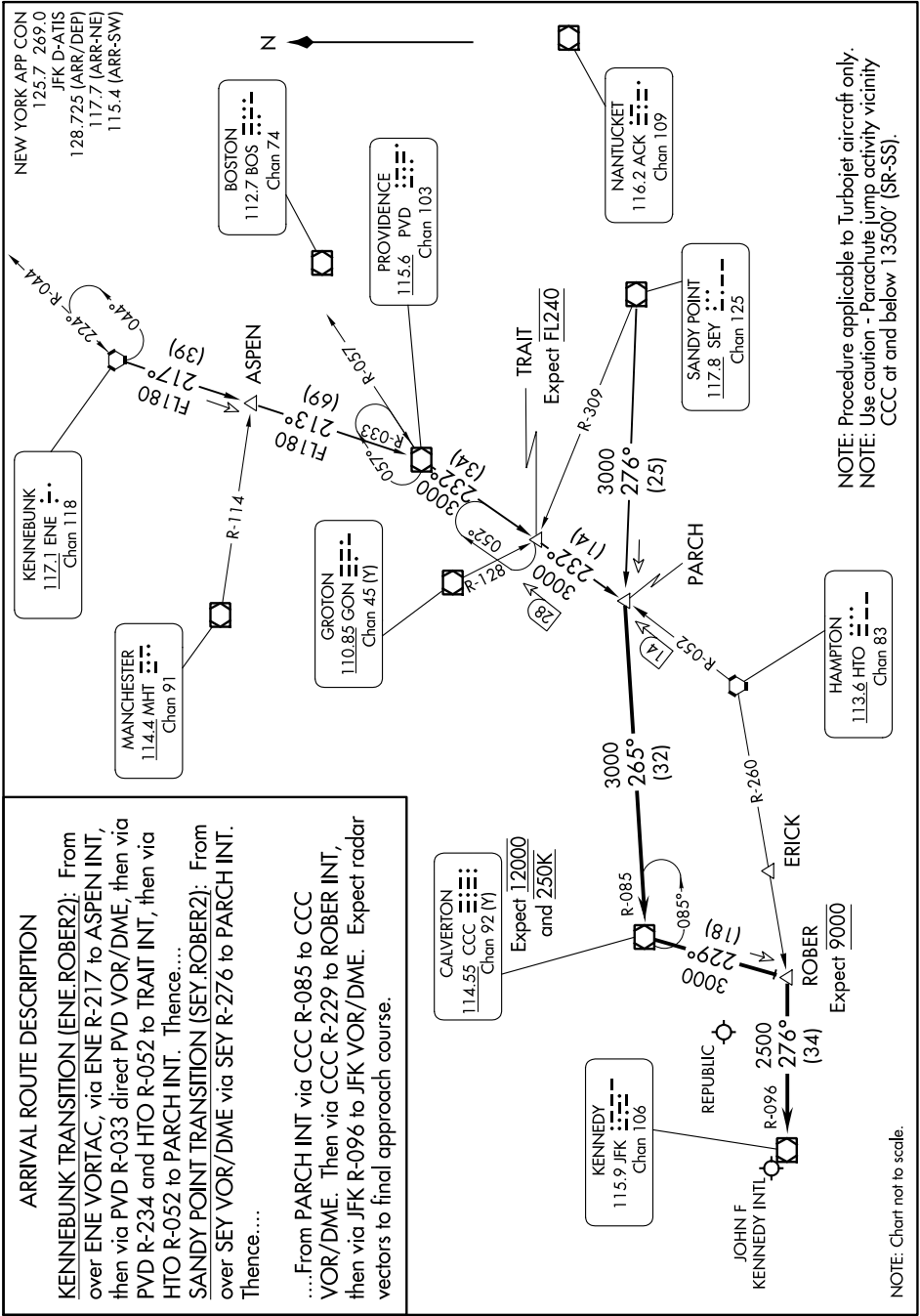


# ROBER TWO ARRIVAL

NE-2, 22 FEB 2024 to 21 MAR 2024



## ARRIVAL ROUTE DESCRIPTION

**KENNEBUNK TRANSITION (ENE.ROBER2):** From over ENE VORTAC, via ENE R-217 to ASPEN INT, then via PVD R-033 direct PVD VOR/DME, then via PVD R-234 and HTO R-052 to TRAIT INT, then via HTO R-052 to PARCH INT. Thence....

**SANDY POINT TRANSITION (SEY.ROBER2):** From over SEY VOR/DME via SEY R-276 to PARCH INT. Thence....

....From PARCH INT via CCC R-085 to CCC VOR/DME. Then via CCC R-229 to ROBER INT, then via JFK R-096 to JFK VOR/DME. Expect radar vectors to final approach course.

NOTE: Procedure applicable to Turbojet aircraft only.  
 NOTE: Use caution - Parachute jump activity vicinity CCC at and below 13500' (SR-SS).

NOTE: Chart not to scale.

NE-2, 22 FEB 2024 to 21 MAR 2024

# ROBER TWO ARRIVAL