

LOC/DME I-HI Q 110.9 Chan 46	APP CRS 044°	Rwy Idg 11010 TDZE 13 Apt Elev 13
--	------------------------	--

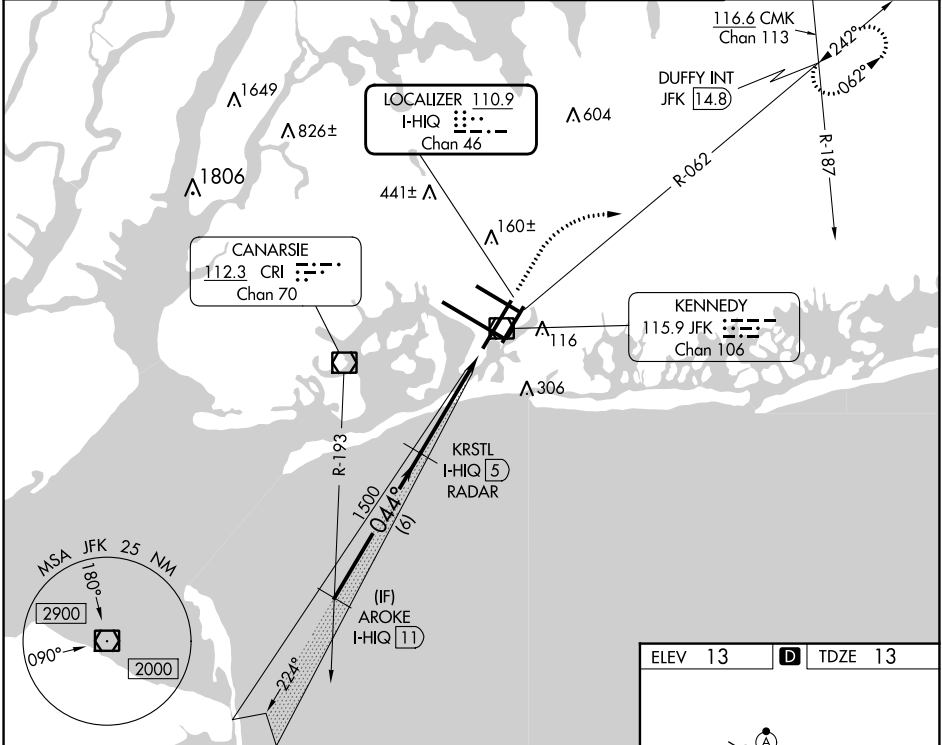
ILS or LOC RWY 4L

JOHN F KENNEDY INTL (JFK)

RADAR required for procedure entry. DME or RADAR required for LOC only.
 Simultaneous approach authorized.
 Autopilot coupled approach NA below 200 feet MSL.

MISSED APPROACH: Climb to 2000 then climbing right turn to 3000 on JFK VOR/DME R-062 to DUFFY INT/JFK 14.8 DME and hold.

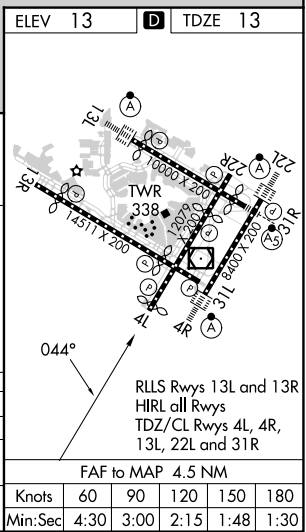
D-ATIS (ARR/DEP) (ARR-NE) (ARR-SW) 128.725 117.7 115.4	NEW YORK APP CON 128.125 269.0	KENNEDY TOWER Rwys 4R/22L and 13L/31R 119.1 281.55 Rwys 4L/22R and 13R/31L 123.9 281.55	GND CON 121.9 348.6	CLNC DEL 135.05 348.6	CPDLC
---	--	---	-------------------------------	---------------------------------	-------



VGSI and ILS glidepath not coincident (VGSI Angle 3.00/TCH 75).

AROE I-HI Q (11)	KRSTL I-HI Q (5) RADAR	I-HI Q (1.6)	I-HI Q (0.5)
2000	1500	1500	1500
GS 3.00° TCH 57	044°	044°	044°
6 NM	3.3 NM	1.2 NM	

CATEGORY	A	B	C	D
S-ILS 4L		231/40	218 (300-¾)	
S-LOC 4L	460/55	447 (500-1)	460-1⅓	447 (500-1⅓)
CIRCLING	640-1	627 (700-1)	700-2 687 (700-2)	700-2¼ 687 (700-2¼)



NE-2, 22 FEB 2024 to 21 MAR 2024

NE-2, 22 FEB 2024 to 21 MAR 2024