

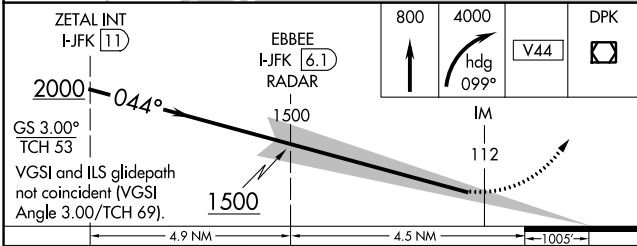
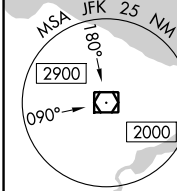
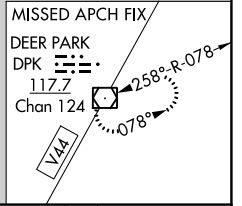
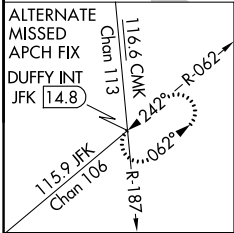
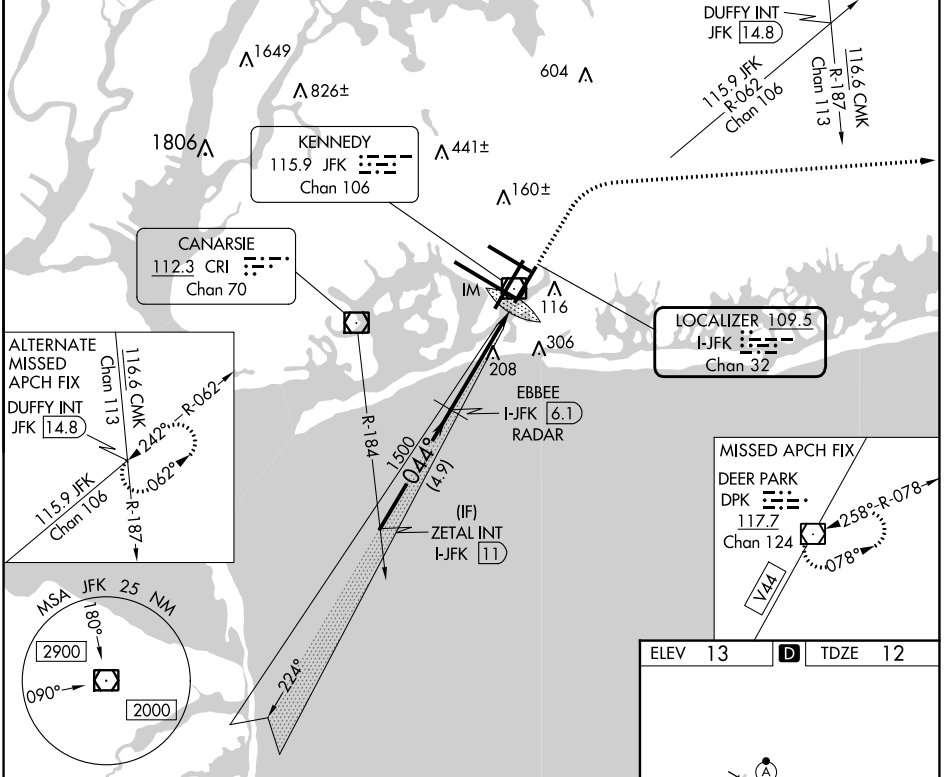
ILS RWY 4R (CAT II & III)

JOHN F KENNEDY INTL (JFK)

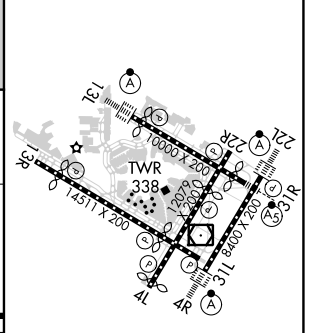
LOC/DME I-JFK	APP CRS	Rwy Idg	8400
109.5	044°	TDZE	12
Chan 32		Apt Elev	13

RADAR required for procedure entry.		ALSF-2	MISSED APPROACH: Climb to 800 then climbing right turn to 4000 heading 099° and V44 to DPK VOR/DME and hold.	
Simultaneous approach authorized.				

D-ATIS (ARR/DEP) (ARR-NE) (ARR-SW)	NEW YORK APP CON	KENNEDY TOWER		GND CON	CLNC DEL	CPDLC
128.725 117.7 115.4	128.125 269.0	Rwys 4R/22L and 13L/31R 119.1 281.55		121.9	135.05	
		Rwys 4L/22R and 13R/31L 123.9 281.55		348.6	348.6	



ELEV 13	D	TDZE 12
---------	----------	---------



CATEGORY	A	B	C	D
S-ILS 4R	CAT II RA 112/12 100 DA 112			
S-ILS 4R	CAT III RVR 06			

CATEGORY II & III ILS - SPECIAL AIRCREW & AIRCRAFT CERTIFICATION REQUIRED

RLS Rwys 13L and 13R
HIRL all Rwys
TDZ/CL Rwys 4L, 4R, 13L, 22L and 31R

NE-2, 22 FEB 2024 to 21 MAR 2024

NE-2, 22 FEB 2024 to 21 MAR 2024