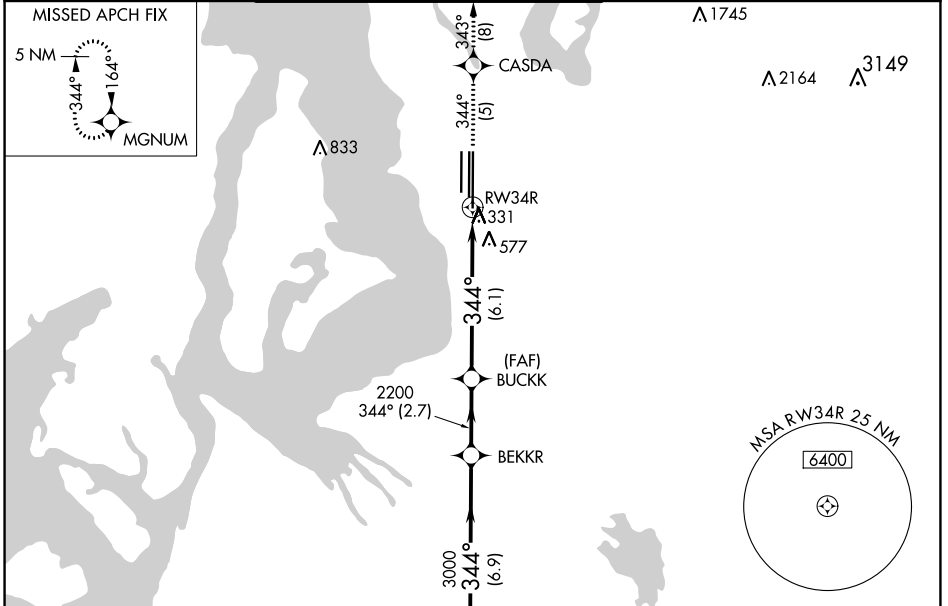


| | |
|------------------------|--|
| APP CRS 344° | Rwy Idg 11901 TDZE 372 Apt Elev 432 |
|------------------------|--|

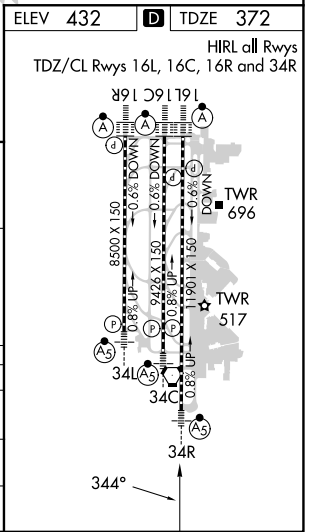
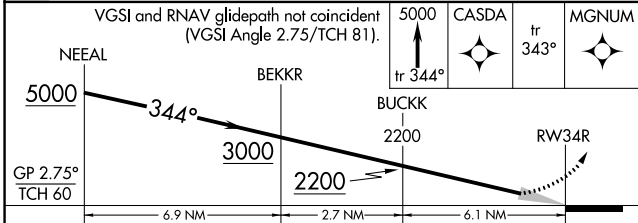
RNAV (RNP) Z RWY 34R

SEATTLE-TACOMA INTL (SEA)

| | | | | | |
|--|---|--|--|--------------------------|-------|
| RNP AR APCH. | | MALSR | MISSED APPROACH: Climb to 5000 on track 344° to CASDA and on track 343° to MGNUM and hold, continue climb-in-hold to 5000. | | |
| <p>Simultaneous approach authorized. For uncompensated Baro-VNAV systems, procedure NA below -6°C or above 54°C. Use of FD or AP required during simultaneous operations. For inop ALS, increase RNP 0.28 all Cats visibility to 1½ SM. Inop table does not apply to RNP 0.30.</p> | | | | | |
| D-ATIS 118.0 | SEATTLE APP CON 133.65 273.45 | SEATTLE TOWER 119.9 239.3 (Rwys 16L, 16C, 34C, 34R) 120.95 239.3 (Rwys 16R, 34L) | GND CON 121.7 | CLNC DEL 128.0 | CPDLC |



| | |
|---|----------|
| ELEV 432 | TDZE 372 |
| HIRL all Rwys TDZ/CL Rwys 16L, 16C, 16R and 34R | |



| | | | | |
|-------------------------------|---|--------|--------------|---|
| CATEGORY | A | B | C | D |
| RNP 0.28 DA | | 867/50 | 495 (500-1) | |
| RNP 0.30 DA | | 880-1½ | 508 (500-1½) | |
| AUTHORIZATION REQUIRED | | | | |

NW-1, 22 FEB 2024 to 21 MAR 2024

NW-1, 22 FEB 2024 to 21 MAR 2024