


APP CRS	Rwy ldg	<b>8500</b>
<b>164°</b>	TDZE	<b>415</b>
	Apt Elev	<b>433</b>

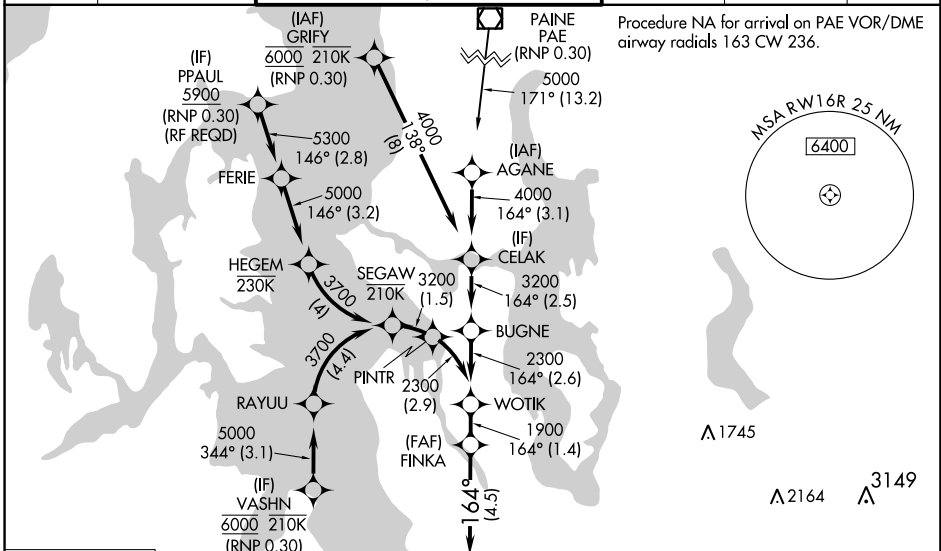
# RNAV (RNP) Z RWY 16R

SEATTLE-TACOMA INTL (SEA)

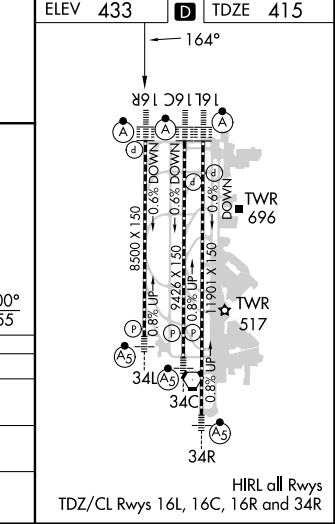
**▼** For uncompensated Baro-VNAV systems, procedure NA below -6°C (22°F) or above 54°C (130°F). Simultaneous approach authorized with Rwy 16L, except for arrivals at PPAUL and VASHN. GPS required. Use of FD or AP providing RNAV track guidance required during simultaneous operations. For inop ALS, increase RNP 0.15 all Cats visibility to RVR 5800, increase RNP 0.30 all Cats visibility to 1/2 SM.



**ALSF-2**  
  
**MISSED APPROACH:** Climb to 900 then climbing right direct ZERLI to cross ZERLI at 2000 and hold.

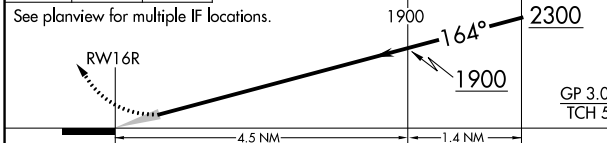
D-ATIS	SEATTLE APP CON	SEATTLE TOWER	GND CON	CLNC DEL	CPDLC
<b>118.0</b>	<b>133.65 273.45</b>	<b>119.9 239.3</b> (Rwys 16L, 16C, 34C, 34R) <b>120.95 239.3</b> (Rwys 16R, 34L)	<b>121.7</b>	<b>128.0</b>	



## RADAR REQUIRED



900  
  
 ZERLI 2000  
  
 VGSI and RNAV glidepath not coincident (VGSI Angle 3.00/TCH 69).  
 FINKA 1900 WOTIK 2300



CATEGORY	A	B	C	D
RNP 0.15 DA		770/34	355 (400-%)	
RNP 0.30 DA		854/50	439 (500-1)	

## AUTHORIZATION REQUIRED

NW-1, 22 FEB 2024 to 21 MAR 2024

NW-1, 22 FEB 2024 to 21 MAR 2024