

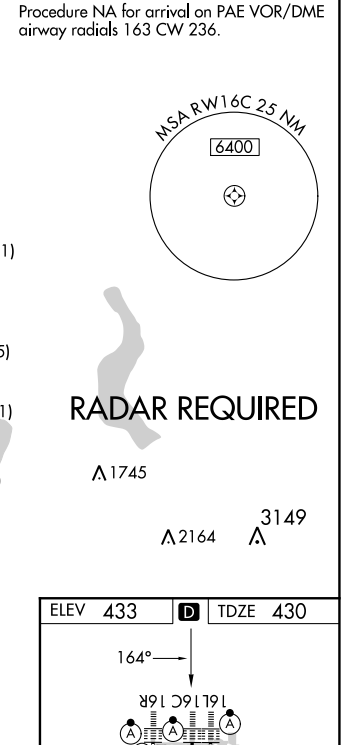
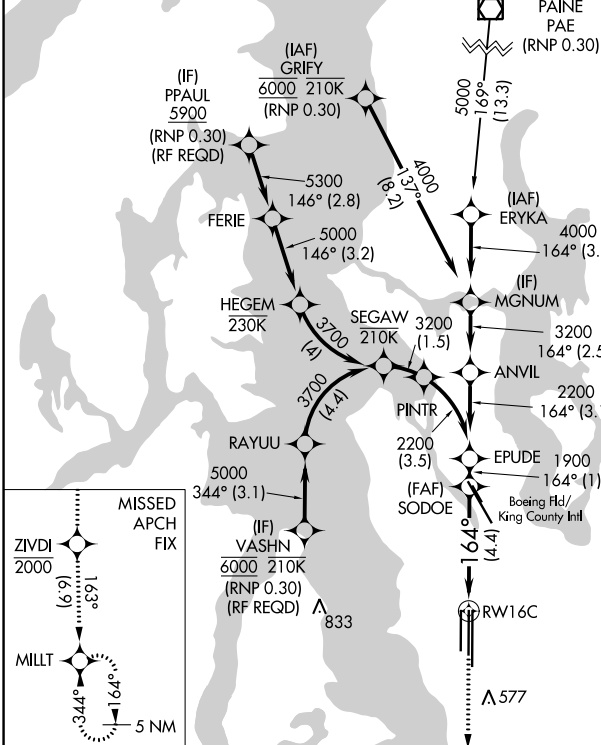
RNAV (RNP) Z RWY 16C

SEATTLE-TACOMA INTL (SEA)

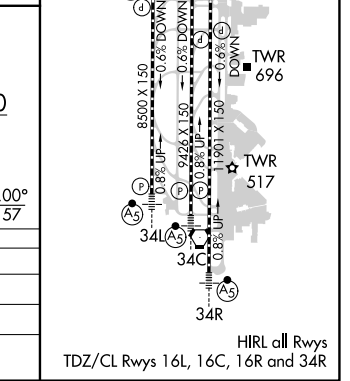
APP CRS	Rwy Idg	9426
164°	TDZE	430
	Apt Elev	433

<p>▽ For uncompensated Baro-VNAV systems, procedure NA below -6°C (22°F) or above 54°C (130°F). GPS required. See additional requirements on adjacent information page. For inop ALS, increase RNP 0.12 all Cats visibility to RVR 5200, and increase RNP 0.30 all Cats visibility to 1½ SM.</p>	SEATTLE TOWER	
	(Rwys 16L, 16C, 34C, 34R) 119.9 239.3 (Rwys 16R, 34L) 120.95 239.3	

ALSF-2 	MISSED APPROACH: Climb direct ZIVDI to cross ZIVDI at or below 2000, then climb to 5000 on track 163° to MILLT and hold, continue climb-in-hold to 5000.			
D-ATIS 118.0	SEATTLE APP CON 133.65 273.45	GND CON 121.7	CLNC DEL 128.0	CPDLC



ZIVDI 2000 163° (6.9)	MISSED APCH FIX ZIVDI 2000 163° (6.9)	MILLT 5000 164° (3.4)	VGSIs and RNAV glidepaths not coincident (VGSi Angle 3.00/TCH 71). EPUDE 1900 164° 2200 GP 3.00° TCH 57
See Planview for multiple IF locations.			
RWY 16C 4.4 NM 1 NM			
CATEGORY RNP 0.12 DA RNP 0.30 DA	A 758/29 834/43	B 328 (400-%) 404 (500-%)	C D



AUTHORIZATION REQUIRED