

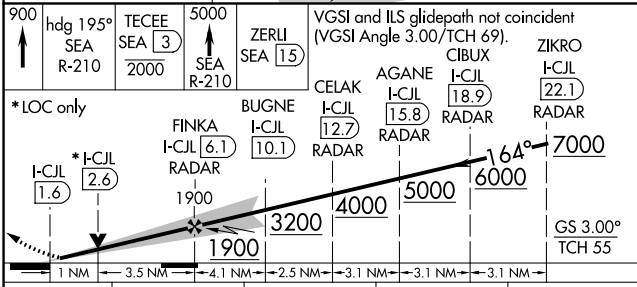
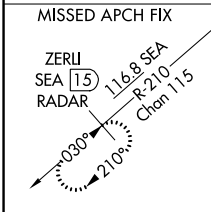
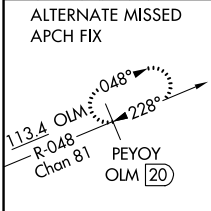
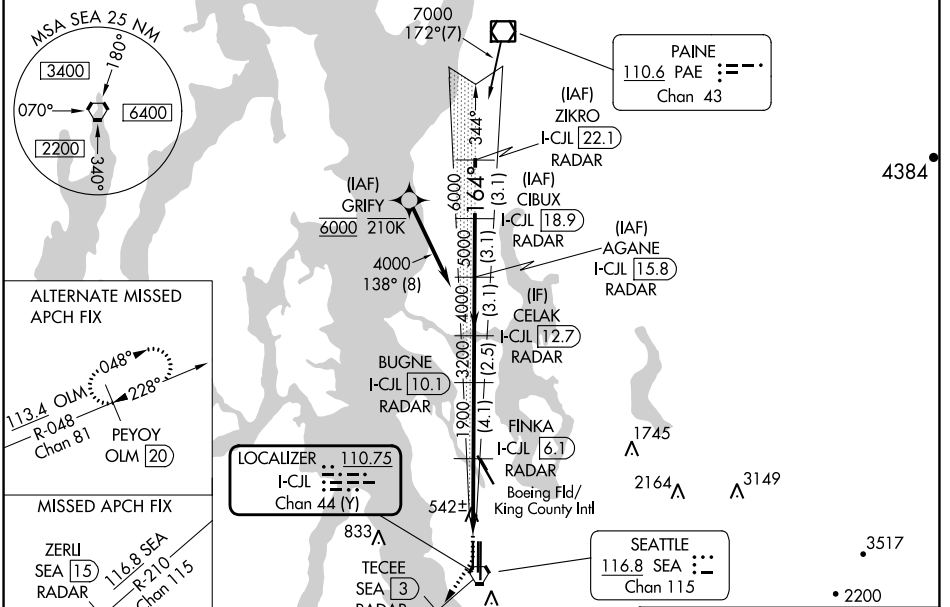
LOC/DME I-CJL 110.75 Chan 44 (Y)	APP CRS 164°	Rwy Idg TDZE Apt Elev	8500 415 432
---	------------------------	-----------------------------	---

ILS or LOC RWY 16R

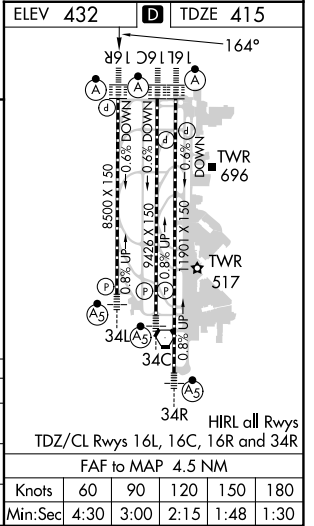
SEATTLE-TACOMA INTL (SEA)

DME or RADAR required. From GRIFY: RNAV 1-GPS required.		ALSIF-2	MISSED APPROACH: Climb to 900 then climb on heading 195° and on SEA VORTAC R-210 to cross TECEE/SEA 3 DME/RADAR at or below 2000 then climb to 5000 on SEA VORTAC R-210 to ZERLI/SEA 15 DME/RADAR and hold, continue climb-in-hold to 5000.	
<p>Simultaneous approach authorized with Rwy 16L and 16C. Simultaneous operations require use of vertical guidance, maintain last assigned altitude until established on glideslope.</p>				

D-ATIS 118.0	SEATTLE APP CON 133.65 273.45	SEATTLE TOWER 119.9 239.3 (Rwys 16L, 16C, 34C, 34R) 120.95 239.3 (Rwys 16R, 34L)	GND CON 121.7	CLNC DEL 128.0	CPDLC
------------------------	---	--	-------------------------	--------------------------	-------



900	hdg 195° SEA R-210	TECEE SEA 3 2000	5000	ZERLI SEA 15	VGSI and ILS glidepath not coincident (VGSI Angle 3.00/TCH 69).					
*LOC only					FINKA I-CJL 6.1 RADAR	BUGNE I-CJL 10.1 RADAR	CELAK I-CJL 12.7 RADAR	AGANE I-CJL 15.8 RADAR	CIBUX I-CJL 18.9 RADAR	ZIKRO I-CJL 22.1 RADAR
*I-CJL 1.6					*I-CJL 2.6		164°			
1 NM					3.5 NM		4.1 NM		2.5 NM	
CATEGORY					A		B		C	
S-ILS 16R					615/18		200 (200-½)			
S-LOC 16R					800/24		385 (400-½)		800/35 385 (400-¾)	
CIRCLING					1000-1		568 (600-1)		1000-2 568 (600-2)	



NW-1, 22 FEB 2024 to 21 MAR 2024

NW-1, 22 FEB 2024 to 21 MAR 2024