

LOC/DME I-SNQ 110.3 Chan 40	APP CRS 164°	Rwy Idg 11901 TDZE 432 Apt Elev 432
--	------------------------	--

ILS or LOC RWY 16L

SEATTLE-TACOMA INTL (SEA)

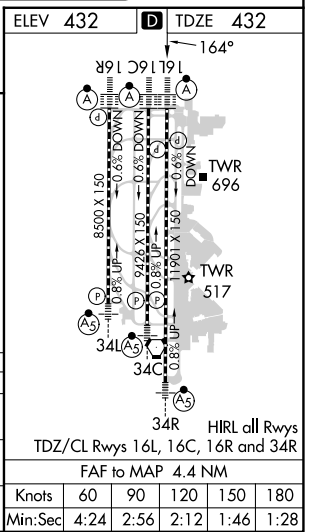
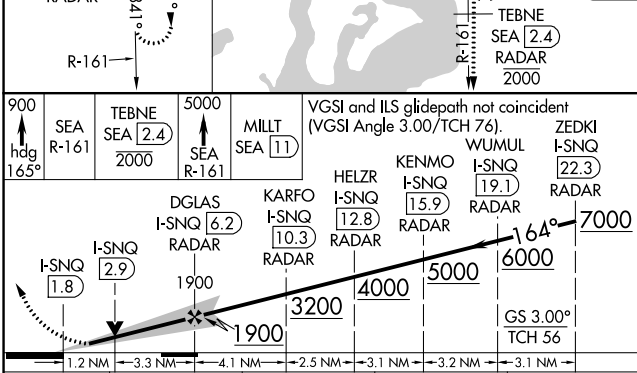
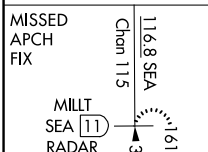
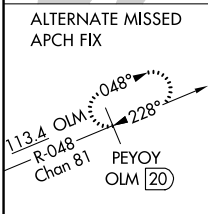
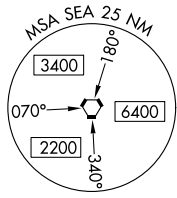
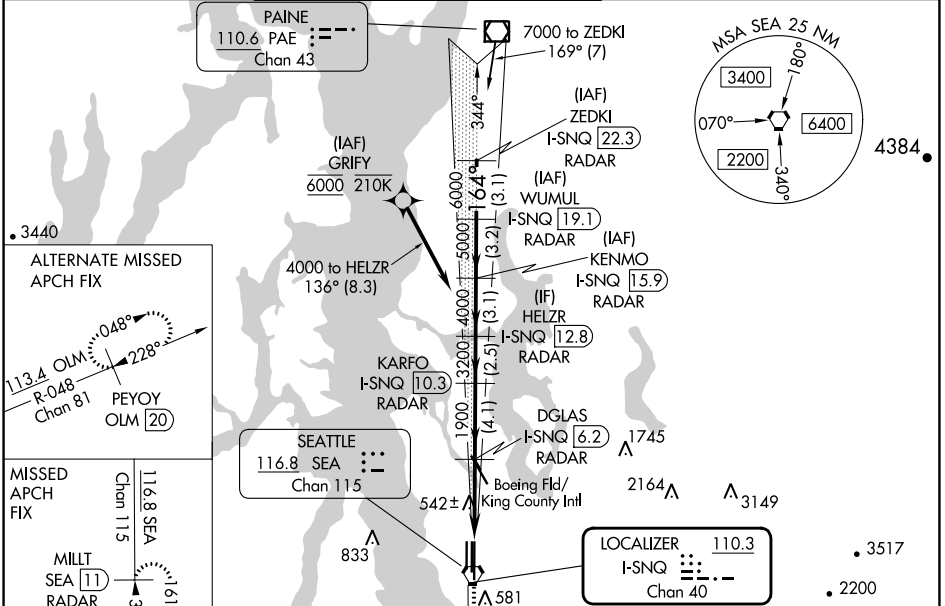
DME or RADAR required. RNP APCH-GPS, from GRIFY.

Simultaneous approach authorized.

ALSIF-2

MISSED APPROACH: Climb to 900 on heading 165° then on SEA VORTAC R-161 to cross TEBNE/SEA 2.4 DME/RADAR at or below 2000 then climb to 5000 on SEA VORTAC R-161 to MILLT/SEA 11 DME/RADAR and hold, continue climb-in-hold to 5000.

D-ATIS 118.0	SEATTLE APP CON 133.65 273.45	SEATTLE TOWER 119.9 239.3 (Rwys 16L, 16C, 34C, 34R) 120.95 239.3 (Rwys 16R, 34L)	GND CON 121.7	CLNC DEL 128.0	CPDLC
------------------------	---	--	-------------------------	--------------------------	-------



CATEGORY	A	B	C	D
S-ILS 16L	697/20 265 (300-1/2)	632/18 200 (200-1/2)		
S-LOC 16L	880/24 448 (500-1/2)	880/45 448 (500-7/8)		
CIRCLING	1000-1 568 (600-1)	1000-1 1/2 568 (600-1/2)	1000-2 568 (600-2)	

ELEV 432	TDZE 432
164°	
TWR 696	
TWR 517	
34R HIRL all Rwys	
TDZ/CL Rwys 16L, 16C, 16R, and 34R	
FAF to MAP 4.4 NM	
Knots	60 90 120 150 180
Min:Sec	4:24 2:56 2:12 1:46 1:28

NW-1, 22 FEB 2024 to 21 MAR 2024

NW-1, 22 FEB 2024 to 21 MAR 2024