

| | | |
|--|------------------------|--|
| LOC/DME I-SNQ 110.3 Chan 40 | APP CRS 164° | Rwy Idg 11901 TDZE 432 Apt Elev 432 |
|--|------------------------|--|

ILS RWY 16L (CAT II & III)

SEATTLE-TACOMA INTL (SEA)

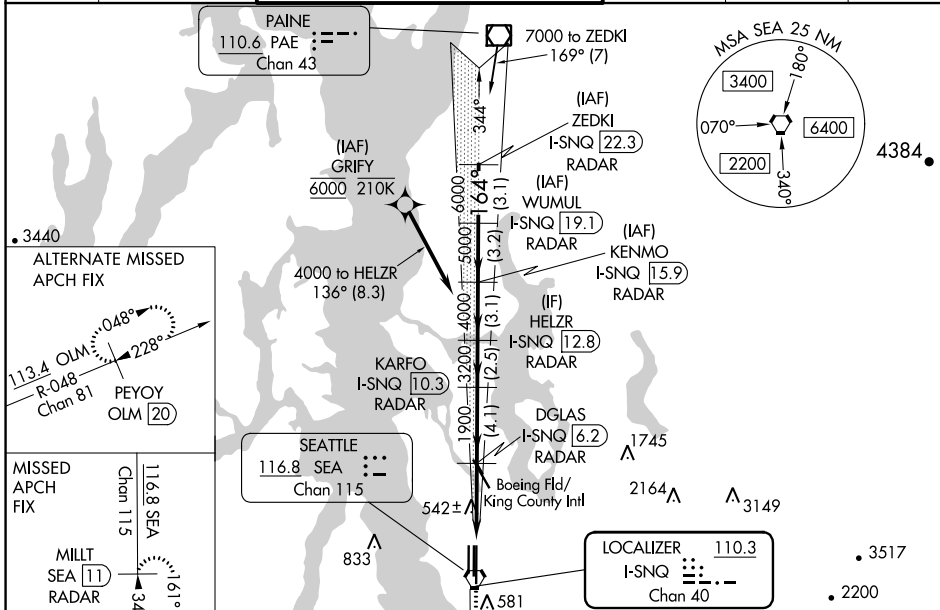
DME or RADAR required. RNP APCH-GPS, from GRIFY.

Simultaneous approach authorized. Cat II: RVR 1000 authorized with specific OPSPEC, MSPEC, or LOA approval and use of Autoland or HUD to touchdown.

ALSF-2

MISSED APPROACH: Climb to 900 on heading 165° then on SEA VORTAC R-161 to cross TEBNE/SEA 2.4 DME/RADAR at or below 2000 then climb to 5000 on SEA VORTAC R-161 to MILLT/SEA 11 DME/RADAR and hold, continue climb-in-hold to 5000.

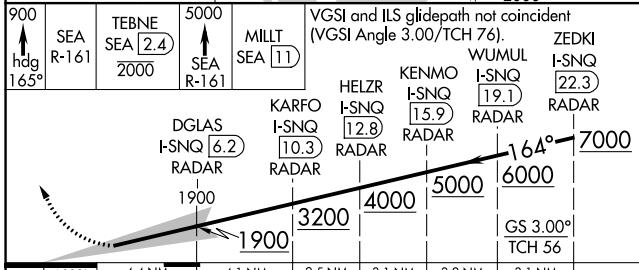
| | | | | | |
|------------------------|---|--|-------------------------|--------------------------|-------|
| D-ATIS 118.0 | SEATTLE APP CON 133.65 273.45 | SEATTLE TOWER 119.9 239.3 (Rwys 16L, 16C, 34C, 34R) 120.95 239.3 (Rwys 16R, 34L) | GND CON 121.7 | CLNC DEL 128.0 | CPDLC |
|------------------------|---|--|-------------------------|--------------------------|-------|



NW-1, 22 FEB 2024 to 21 MAR 2024

NW-1, 22 FEB 2024 to 21 MAR 2024

| | |
|----------|-------------------|
| ELEV 432 | D TDZE 432 |
|----------|-------------------|



| CATEGORY | A | B | C | D |
|-----------|----|-----------------------------|---|---|
| S-ILS 16L | NA | CAT II RA 176/12 100 DA 532 | | |
| S-ILS 16L | NA | CAT III RVR 03 | | |

CATEGORY II & III ILS - SPECIAL AIRCREW & AIRCRAFT CERTIFICATION REQUIRED

