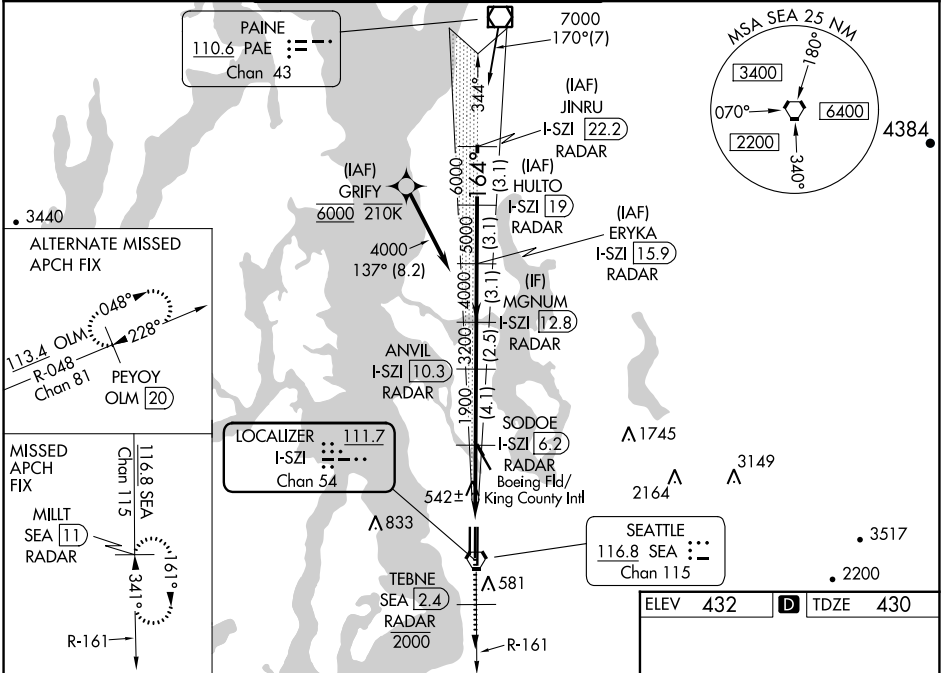


LOC/DME I-SZI 111.7 Chan 54	APP CRS 164°	Rwy Idg TDZE 430 Apt Elev 432
---	------------------------	---

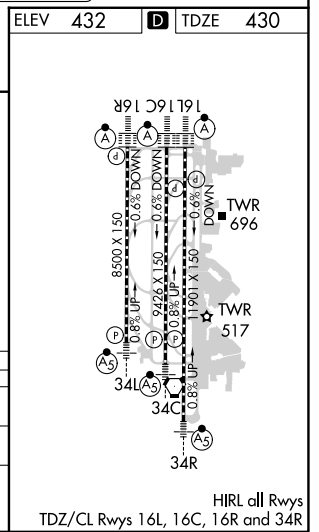
ILS RWY 16C (CAT II & III)

SEATTLE-TACOMA INTL (SEA)

DME or RADAR required. From GRIFY:RNAV 1-GPS required.		ALSF-2 	MISSED APPROACH: Climb on heading 160° and SEA VORTAC R-161 to cross TEBNE/SEA 2.4 DME/RADAR at or below 2000, then climb to 5000 on SEA VORTAC R-161 to MILT/SEA 11 DME/RADAR and hold, continue climb-in-hold to 5000.				
<p>Simultaneous approach authorized with Rwy 16R. Simultaneous operations require use of vertical guidance, maintain last assigned altitude until established on glideslope. Cat II: RVR 1000 authorized with specific OPSPEC, MSPEC, or LOA approval and use of Autoland or HUD to touchdown.</p>			D-ATIS 118.0	SEATTLE APP CON 133.65 273.45	SEATTLE TOWER 119.9 239.3 (Rwys 16L, 16C, 34C, 34R) 120.95 239.3 (Rwys 16R, 34L)	GND CON 121.7	CLNC DEL 128.0



SEA R-161 hdg 160°	TEBNE SEA 2.4 2000	5000 SEA R-161	MILT SEA 11	VGSI and ILS glidepath not coincident (VGSI Angle 3.00/TCH 71).			
SODOE I-SZI 6.2 RADAR	ANVIL I-SZI 10.3 RADAR	MGNUM I-SZI 12.8 RADAR	ERYKA I-SZI 15.9 RADAR	HULTO I-SZI 19 RADAR	JINRU I-SZI 22.2 RADAR		
<p>1900 3200 4000 5000 6000 7000</p> <p>GS 3.00° TCH 55</p>							
CATEGORY A		CATEGORY B		CATEGORY C		CATEGORY D	
S-ILS 16C CAT II RA 126/12 100 DA 530							
S-ILS 16C CAT III RVR 03							
CATEGORY II & III ILS - SPECIAL AIRCREW & AIRCRAFT CERTIFICATION REQUIRED							



NW-1, 22 FEB 2024 to 21 MAR 2024

NW-1, 22 FEB 2024 to 21 MAR 2024