

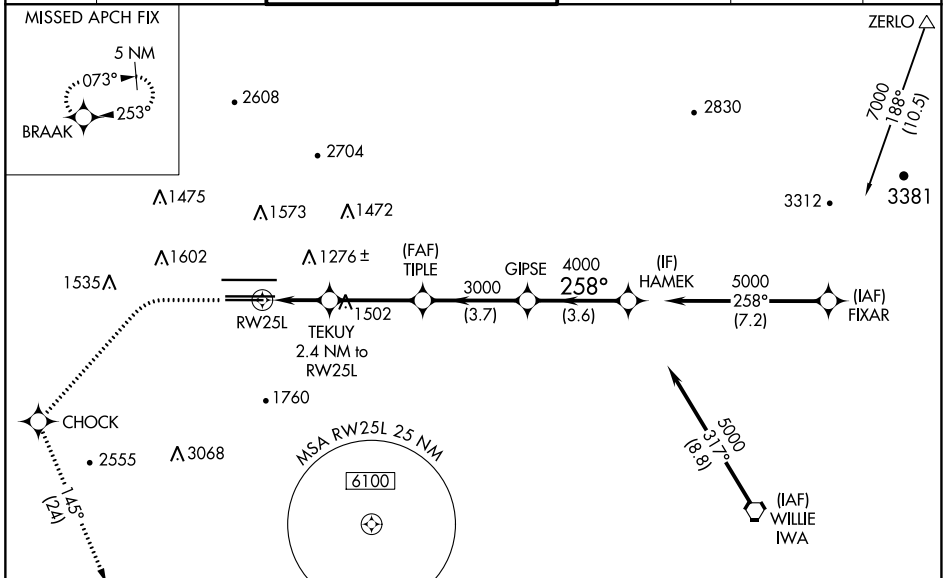
WAAS CH <b>82211</b> <b>W25B</b>	APP CRS <b>258°</b>	Rwy Idg TDZE Apt Elev	<b>7800</b> <b>1126</b> <b>1135</b>
--	------------------------	-----------------------------	---

# RNAV (GPS) Y RWY 25L

PHOENIX SKY HARBOR INTL (PHX)

RNP APCH-GPS.	MALSR 	MISSED APPROACH: Climb to 1900 then climbing left turn to 5000 direct CHOCK and on track 145° to BRAAK and hold.
---------------	-----------	--

D-ATIS <b>127.575</b>	PHOENIX APP CON <b>128.65 353.9</b>	PHOENIX TOWER <b>118.7 278.8</b> (Rwy 8-26) <b>120.9 254.3</b> (Rwy 7L-25R, 7R-25L)	GND CON <b>119.75 269.2</b> (N) <b>132.55 269.2</b> (S)	CLNC DEL <b>118.1 269.2</b>	CPDLC
--------------------------	--	---	---	--------------------------------	-------



ELEV 1135	<b>D</b>	TDZE 1126
-----------	----------	-----------

<p>HIRL Rwy 8-26, 7L-25R and 7R-25L REIL Rwy 26</p>	1900	5000	CHOCK	tr 145°	BRAAK	VGSI and RNAV glidepath not coincident (VGSI Angle 3.00/TCH 66). HAMEK GIPSE TIPLE TEKUY 2.4 NM to RWY 25L 1.7 NM to RWY 25L 1940 3000 4000 258° 5000 GP 3.00° TCH 49	
	CATEGORY		A	B	C		D
	LPV	DA	1449-½		323 (400-½)		
	LNAV/VNAV	DA	1589-1		463 (500-1)		1674-1½ 548 (600-1½)
	LNAV	MDA	1740-½		614 (700-½)		1740-¾ 614 (700-¾)
<b>C</b> CIRCLING		1740-1		605 (700-1)	2040-¾ 905 (1000-¾)	2340-3 1205 (1300-3)	

SW-4, 22 FEB 2024 to 21 MAR 2024

SW-4, 22 FEB 2024 to 21 MAR 2024