

LOC/DME I-AHA 110.75 Chan 44 (Y)	APP CRS 078°	Rwy Idg 7800 TDZE 1116 Apt Elev 1135
------------------------------------------------------	------------------------	-----------------------------------------------------------------

ILS or LOC RWY 7R

PHOENIX SKY HARBOR INTL (PHX)

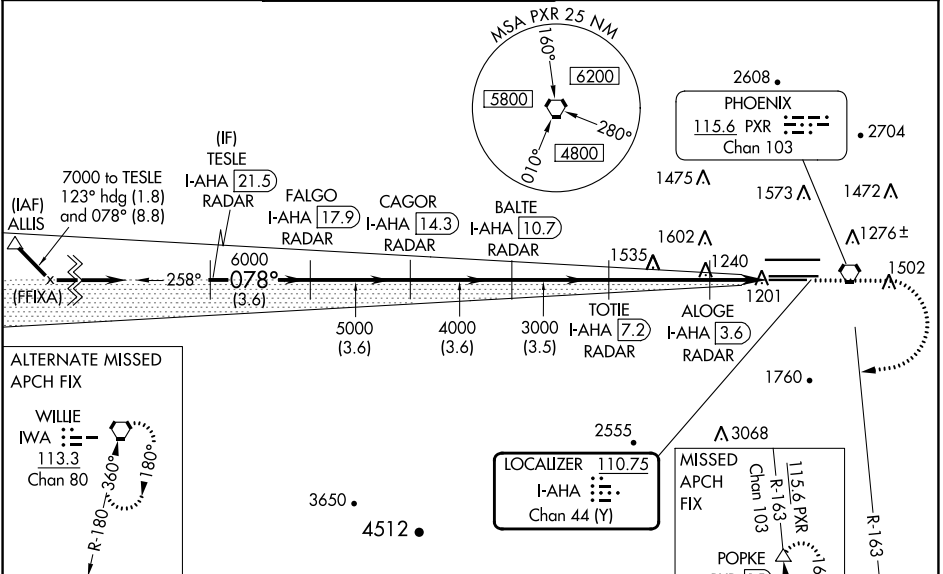
DME required.

⚠ Inop table does not apply to S-ILS 7R. Simultaneous approach authorized with ILS or LOC Rwy 8 and RNAV (GPS) Y Rwy 8. Rwy 7R helicopter visibility reduction below 3/4 SM NA. LOC procedure NA during simultaneous operations. For inop ALS, increase S-LOC 7R visibility Cats A/B to 1 SM and Ops C/D to 1 1/2 SM.

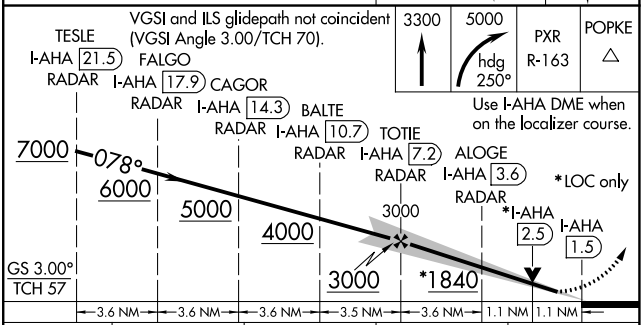
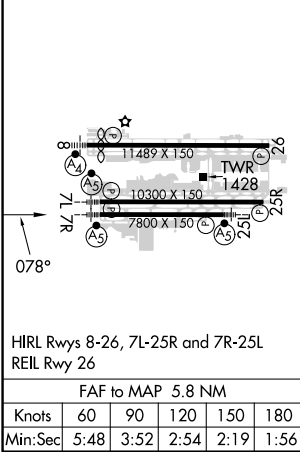


MISSED APPROACH: Climb to 3300 then climbing right turn to 5000 on heading 250° and PXR VORTAC R-163 to POPKE/PXR 15 DME and hold.

D-ATIS 127.575	PHOENIX APP CON 128.65 353.9	PHOENIX TOWER 118.7 278.8 (Rwy 8-26) 120.9 254.3 (Rwy 7L-25R, 7R-25L)	GND CON 119.75 269.2 (N) 132.55 269.2 (S)	CLNC DEL 118.1 269.2	CPDLC
--------------------------	----------------------------------------	-------------------------------------------------------------------------------------------	---------------------------------------------------------------	--------------------------------	-------



ELEV 1135	D	TDZE 1116
------------------	----------	------------------



CATEGORY	A	B	C	D
S-ILS 7R		1369-3/4	253 (300-3/4)	
S-LOC 7R		1520-3/4	404 (400-3/4)	
C CIRCLING	1740-1	605 (700-1)	2040-2 3/4 905 (1000-2 3/4)	2560-3 1425 (1500-3)

SW-4, 22 FEB 2024 to 21 MAR 2024

SW-4, 22 FEB 2024 to 21 MAR 2024