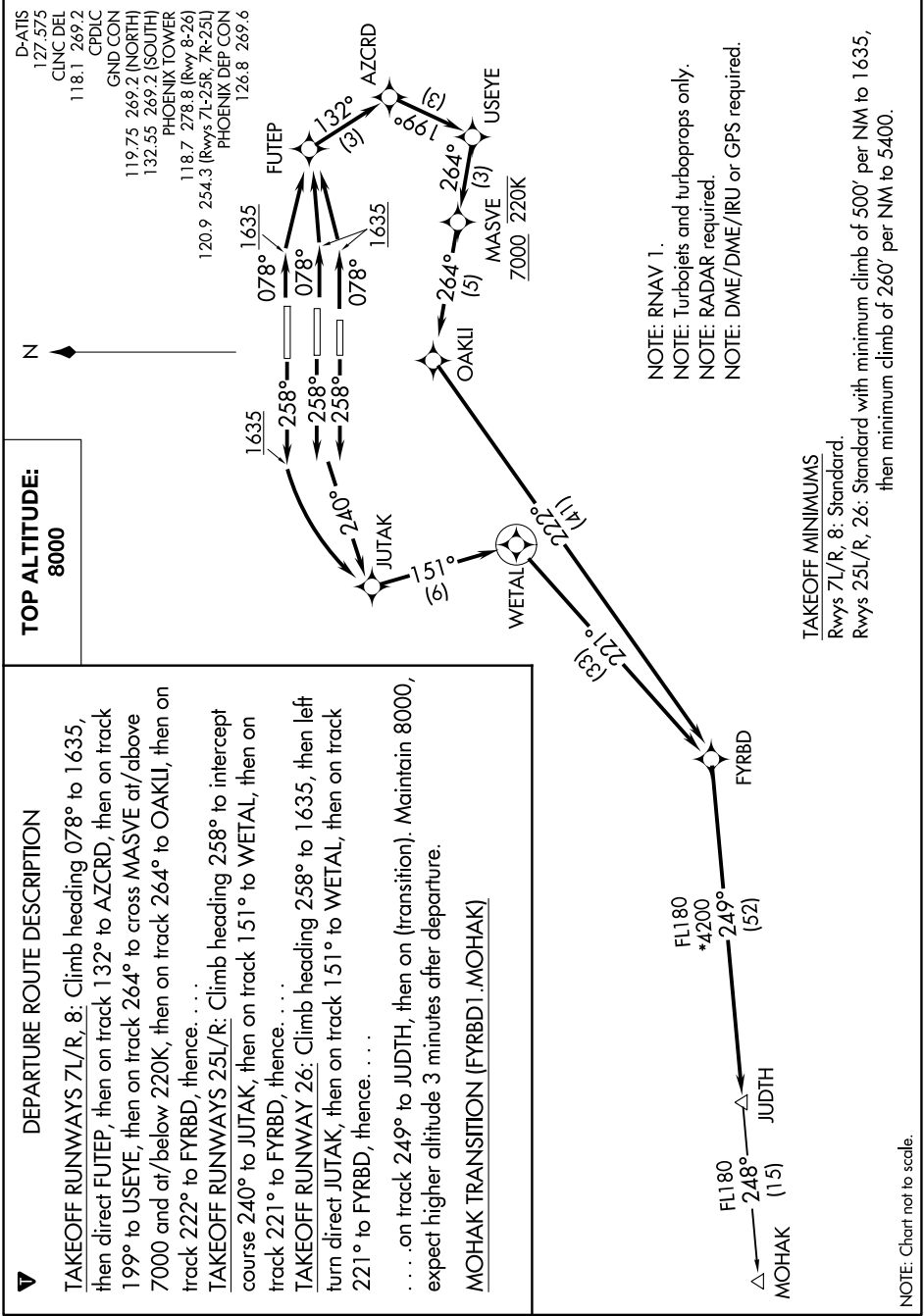


# FYRBD ONE DEPARTURE (RNAV)

AL-322 (FAA)

PHOENIX SKY HARBOR INTL (PHX)  
PHOENIX, ARIZONA

SW-4, 22 FEB 2024 to 21 MAR 2024



**TOP ALTITUDE:**  
8000

## DEPARTURE ROUTE DESCRIPTION

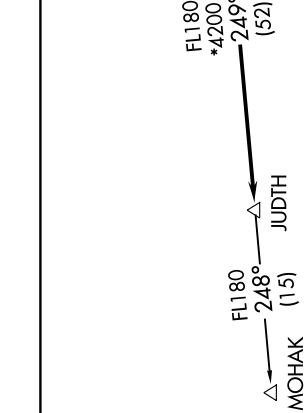
TAKEOFF RUNWAYS 7L/R, 8: Climb heading 078° to 1635, then direct FUTEF, then on track 132° to AZCRD, then on track 199° to USEYE, then on track 264° to cross MASVE at/above 7000 and at/below 220K, then on track 264° to OAKLI, then on track 222° to FYRBD, thence. . . .

TAKEOFF RUNWAYS 25L/R: Climb heading 258° to intercept course 240° to JUTAK, then on track 151° to WETAL, then on track 221° to FYRBD, thence. . . .

TAKEOFF RUNWAY 26: Climb heading 258° to 1635, then left turn direct JUTAK, then on track 151° to WETAL, then on track 221° to FYRBD, thence. . . .

. . . on track 249° to JUDTH, then on (transition). Maintain 8000, expect higher altitude 3 minutes after departure.

## MOHAK TRANSITION (FYRBD1.MOHAK)



**TAKEOFF MINIMUMS**  
Rwys 7L/R, 8: Standard.  
Rwys 25L/R, 26: Standard with minimum climb of 500' per NM to 1635, then minimum climb of 260' per NM to 5400.

NOTE: RNAV 1.  
NOTE: Turbojets and turboprops only.  
NOTE: RADAR required.  
NOTE: DME/DME/IRU or GPS required.

NOTE: Chart not to scale.

SW-4, 22 FEB 2024 to 21 MAR 2024