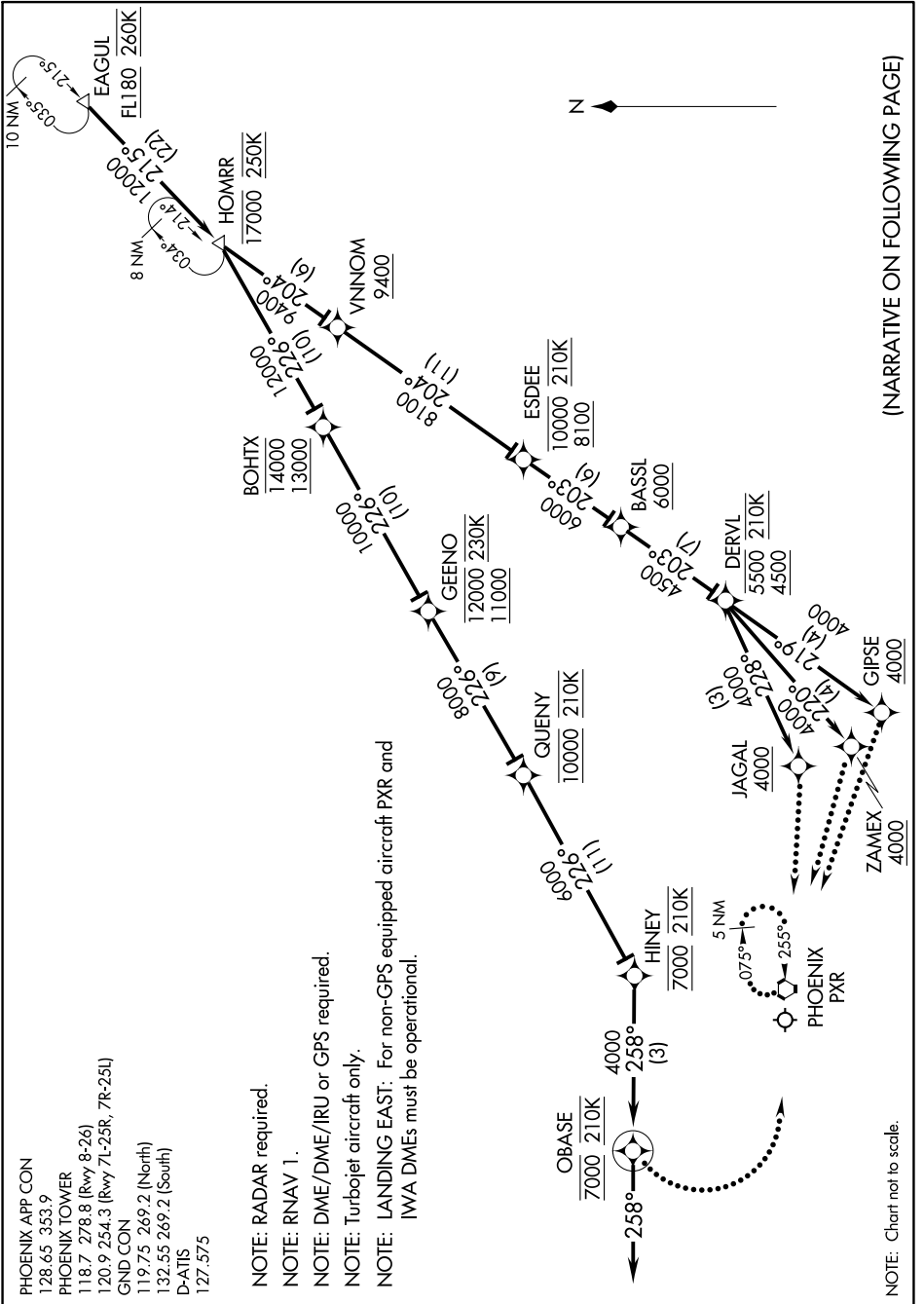


EAGUL SIX ARRIVAL (RNAV) Arrival Routes

SW-4, 22 FEB 2024 to 21 MAR 2024



(NARRATIVE ON FOLLOWING PAGE)

SW-4, 22 FEB 2024 to 21 MAR 2024

- PHOENIX APP CON
128.65 353.9
- PHOENIX TOWER
118.7 278.8 (Rwy 8-26)
120.9 254.3 (Rwy 7L-25R, 7R-25L)
- GND CON
119.75 269.2 (North)
132.55 269.2 (South)
- D-ATIS
127.575

- NOTE: RADAR required.
- NOTE: RNAV 1.
- NOTE: DME/DME/IRU or GPS required.
- NOTE: Turbopjet aircraft only.
- NOTE: LANDING EAST: For non-GPS equipped aircraft PXR and IWA DMEs must be operational.

NOTE: Chart not to scale.

EAGUL SIX ARRIVAL (RNAV) Arrival Routes