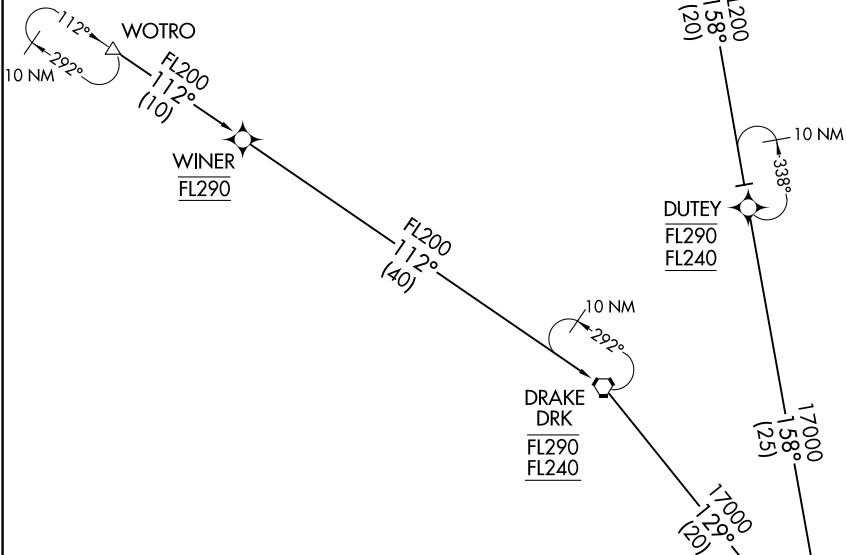


BRUSR ONE ARRIVAL (RNAV) Transition Routes

PHOENIX APP CON
 128.65 353.9
 PHOENIX TOWER
 118.7 278.8 (Rwy 8-26)
 120.9 254.3 (Rwy 7L-25R, 7R-25L)
 GND CON
 119.75 269.2 (North)
 132.55 269.2 (South)
 D-ATIS
 127.575

- NOTE: RADAR required.
- NOTE: RNAV 1.
- NOTE: DME/DME/IRU or GPS required.
- NOTE: Turbojet aircraft only.
- NOTE: All Transitions: For non-GPS equipped aircraft landing east:
TFD, BXK, and IWA DMEs must be operational.
- NOTE: TENTS Transition: For non-GPS equipped aircraft landing west:
PXR and IWA DMEs must be operational.



(CONTINUED ON FOLLOWING PAGE)

NOTE: Chart not to scale.

TENTS TRANSITION (TENTS.BRUSR1)
 WOTRO TRANSITION (WOTRO.BRUSR1)

MAIER
 FL250 270K
 FL190
 See following page
 for Arrival Routes.

BRUSR ONE ARRIVAL (RNAV) Transition Routes