

WYLYY FIVE DEPARTURE (RNAV)

AL-58 (FAA)

BOSTON, MASSACHUSETTS

NE-1, 22 FEB 2024 to 21 MAR 2024

▼ DEPARTURE ROUTE DESCRIPTION
TAKEOFF RUNWAY 27: Climb on heading 272° to intercept course 234° to cross WYLYY at or above 2300, then on depicted route to CYOTI, thence....

....expect vectors to assigned fix/NAVAID (see notes). Maintain 5000 or lower assigned altitude. Expect clearance to filed altitude/flight level within ten (10) minutes after departure.

TOP ALTITUDE:
5000

RNAV 1 - DME/DME/IRU or GPS.
RADAR required.

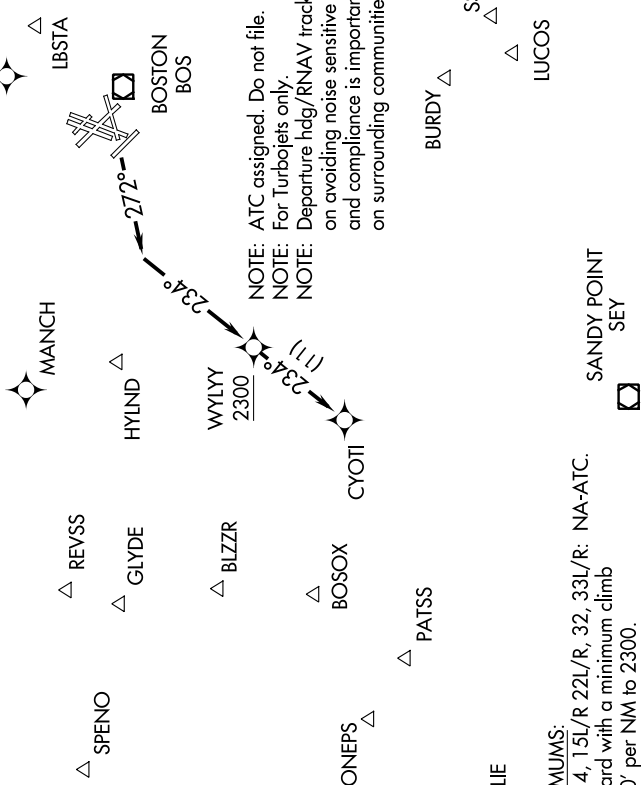
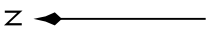
NOTE: Departures assigned routing via LBSTA, PEASE, MANCH, HYLND, or REVSS direct SPENO; BLZZR direct ONEPS; PATSS, GLYDE, or BOSOX expect RADAR vectors to the right to assigned route/fix.

NOTE: Departures assigned routing via CELTK, FRILL, LFW VOR/DME, ACK VOR/DME, BRUWN, SSOXS, LUCOS, SEY VOR/DME, or BURDY expect RADAR vectors to the left to assigned route/fix.

- D-ATIS 135.0
- CINC DEL 121.65 257.8
- CPDLC
- GND CON 121.75 121.9
- BOSTON TOWER 128.8 257.8 (WEST)
- 132.225 257.8 (EAST)
- BOSTON DEP CON 133.0

CHESTER CTR

BARNES BAF



NOTE: ATC assigned. Do not file. For Turbojets only.
NOTE: Departure hdg/RNAV tracks/vectors are predicated on avoiding noise sensitive areas. Flight crew awareness and compliance is important in minimizing noise impacts on surrounding communities.

TAKEOFF MINIMUMS:
 Rwy 4L/R: 9, 14, 15L/R 22L/R, 32, 33L/R: NA-ATC.
 Rwy 27: Standard with a minimum climb of 500' per NM to 2300.

NOTE: Chart not to scale.

NE-1, 22 FEB 2024 to 21 MAR 2024