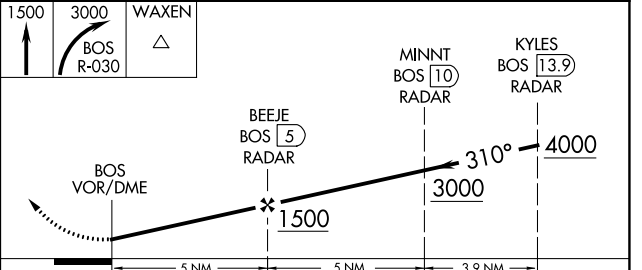
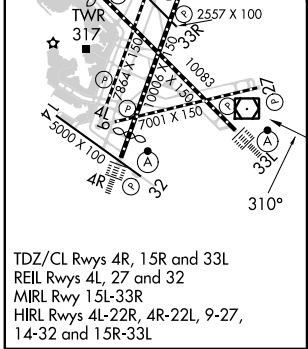
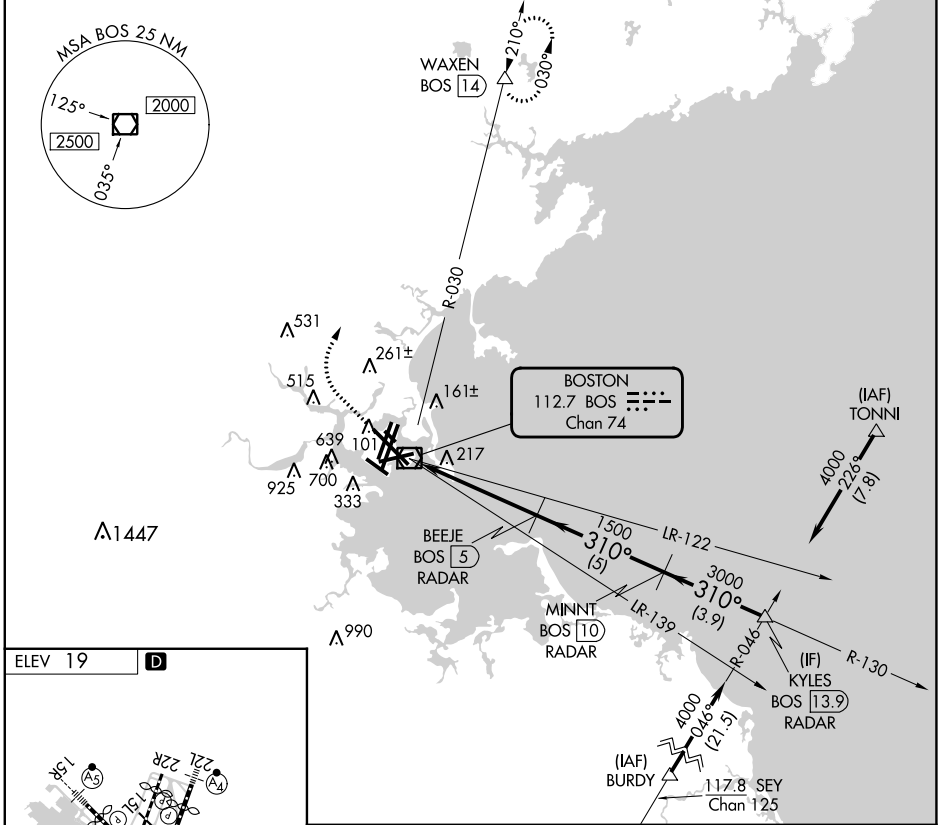


VOR/DME BOS 112.7 Chan 74	APP CRS 310°	Rwy Idg TDZE Apt Elev N/A N/A 19
---	------------------------	--

VOR-A

GENERAL EDWARD LAWRENCE LOGAN INTL (BOS)

DME required.		BOSTON TOWER 128.8 257.8 (WEST) 132.225 257.8 (EAST)		GND CON 121.75 121.9	CLNC DEL 121.65 257.8	CPDLC
D-ATIS 135.0	BOSTON APP CON 120.6 263.1	MISSED APPROACH: Climb to 1500 then climbing right turn to 3000 on BOS VOR/DME R-030 to WAXEN BOS 14 DME and hold.				



CATEGORY	A	B	C	D
C CIRCLING	940-1¼ 921 (1000-1¼)	1040-1½ 1021 (1100-1½)	620-1¾ 601 (700-1¾)	620-2 601 (700-2)

NE-1, 22 FEB 2024 to 21 MAR 2024

NE-1, 22 FEB 2024 to 21 MAR 2024