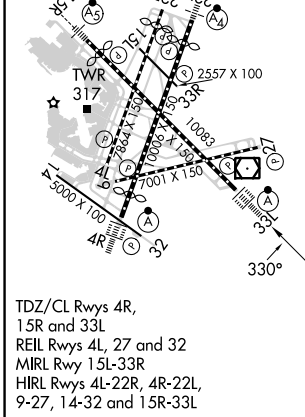
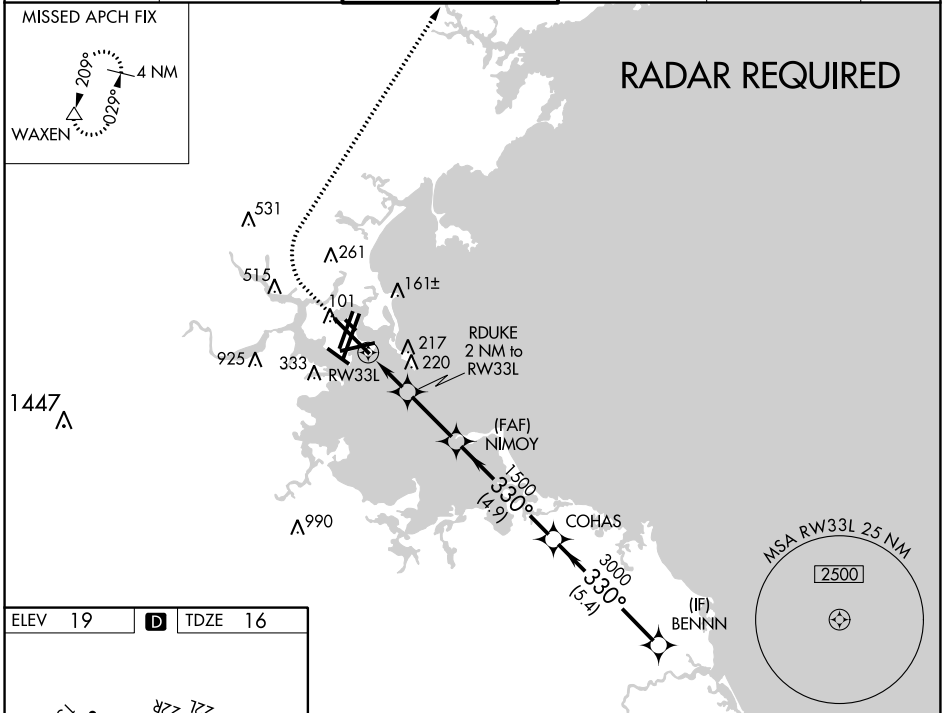


WAAS CH <b>69525</b> <b>W33A</b>	APP CRS <b>330°</b>	Rwy Idg TDZE <b>16</b> Apt Elev <b>19</b>	<b>10083</b>
--	------------------------	---	--------------

# RNAV (GPS) Z RWY 33L

GENERAL EDWARD LAWRENCE LOGAN INTL (BOS)

RNP APCH - GPS.		ALSIF-2		MISSED APPROACH: Climb to 600 then climbing right turn to 3000 direct WAXEN and hold.	
<p>⚠ For uncompensated Baro-VNAV systems, LNAV/VNAV NA below -14°C or above 54°C. Circling NA for Cats C and D west of Rwys 4L and 15R.</p>					
D-ATIS <b>135.0</b>	BOSTON APP CON <b>120.6 263.1</b>	<b>BOSTON TOWER</b> <b>128.8 257.8</b>	GND CON <b>121.75 121.9</b>	CLNC DEL <b>121.65 257.8</b>	CPDLC



BOSTON, MASSACHUSETTS  
Amdt 2E 03NOV22

600	3000	WAXEN	VGSI and RNAV glidepath not coincident (VGSI Angle 3.00/TCH 68).		BENNN
			1.1 NM to RW33L	RDUKE 2 NM to RW33L	4000
			0.9 NM	1.500	330°
			2.5 NM	700	3000
			4.9 NM	1500	330°
			5.4 NM		GP 3.00° TCH 57
CATEGORY	A	B	C	D	
LPV DA	216/18		200 (200-½)		
LNAV/VNAV DA	324/24		308 (400-½)		
LNAV MDA	440/24	424 (500-½)	440/40	424 (500-¾)	
CIRCLING	940-1¼ 921 (1000-1¼)	1040-1½ 1021 (1100-1½)	620-1¾ 601 (700-1¾)	620-2 601 (700-2)	

GENERAL EDWARD LAWRENCE LOGAN INTL (BOS)  
42°22'N-71°00'W  
**RNAV (GPS) Z RWY 33L**

NE-1, 22 FEB 2024 to 21 MAR 2024

NE-1, 22 FEB 2024 to 21 MAR 2024