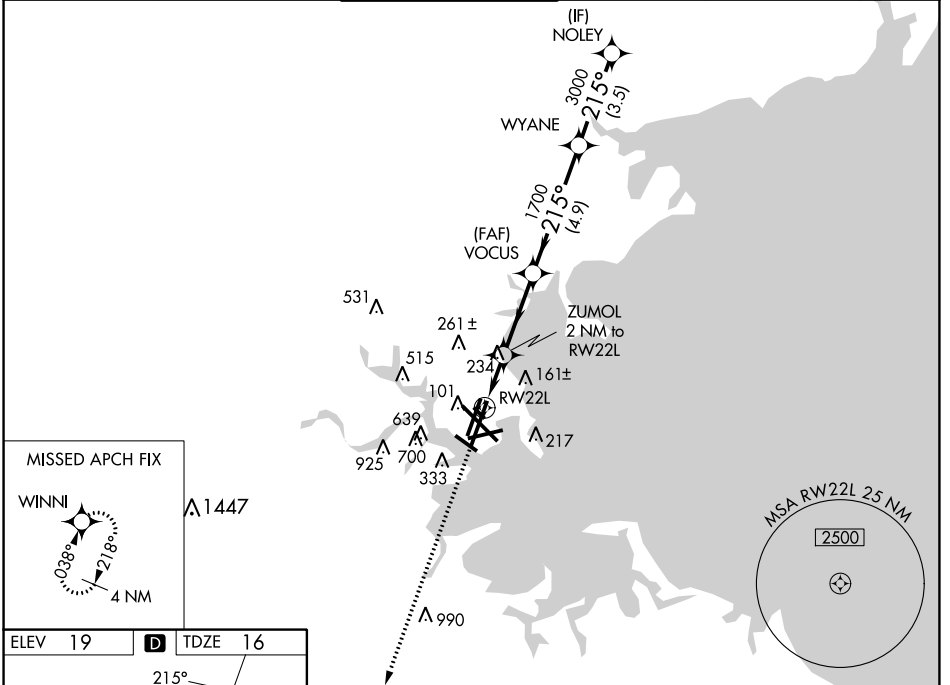


WAAS CH 45925 W22A	APP CRS 215°	Rwy Idg TDZE Apt Elev	8806 16 19
--	------------------------	-----------------------------	---------------------------------------

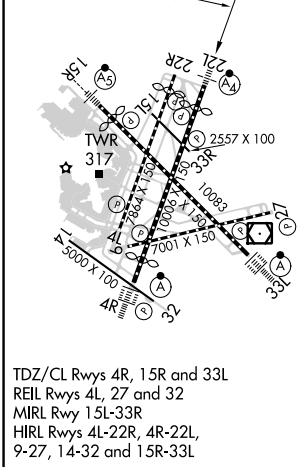
RNAV (GPS) X RWY 22L

GENERAL EDWARD LAWRENCE LOGAN INTL (BOS)

RNP APCH - GPS.		MALSF		MISSED APPROACH: Climb to 3000 direct WINNI and hold.	
<p>▼ Circling NA to Rwy 14. Circling NA for Cats C and D west of Rws 4L and 15R. For inop ALS, increase LNAV/VNAV Cat D visibility to RVR 6000 and LNAV Cat D visibility to 1½ SM. For uncompensated Baro-VNAV systems, LNAV/VNAV NA below -13°C or above 43°C.</p>					
D-ATIS 135.0	BOSTON APP CON 120.6 263.1	BOSTON TOWER 128.8 257.8 (WEST) 132.225 257.8 (EAST)	GND CON 121.75 121.9	CLNC DEL 121.65 257.8	CPDLC



ELEV 19	D	TDZE 16
---------	----------	---------



TDZ/CL Rws 4R, 15R and 33L
 REL Rws 4L, 27 and 32
 MRL Rwy 15L-33R
 HIRL Rws 4L-22R, 4R-22L,
 9-27, 14-32 and 15R-33L

	WINNI	VGSi and RNAV glidepath not coincident (VGSi Angle 3.00/TCH 71).		
	ZUMOL 2 NM to RW22L	VOCUS 1700	WYANE 3000	NOLEY 4000
	1.4 NM	0.6	3.1 NM	4.9 NM
	1.4 NM	0.6	3.1 NM	4.9 NM
GP 3.00° TCH 55				
CATEGORY	A	B	C	D
LPV DA		216/40	200 (200-¾)	
LNAV/VNAV DA		408/50	392 (400-1)	
LNAV MDA	540/40	524 (600-¾)	540-1¼	524 (600-1¼)
C CIRCLING	940-1¼ 921 (1000-1¼)	1040-1½ 1021 (1100-1½)	620-1¾ 601 (700-1¾)	620-2 601 (700-2)