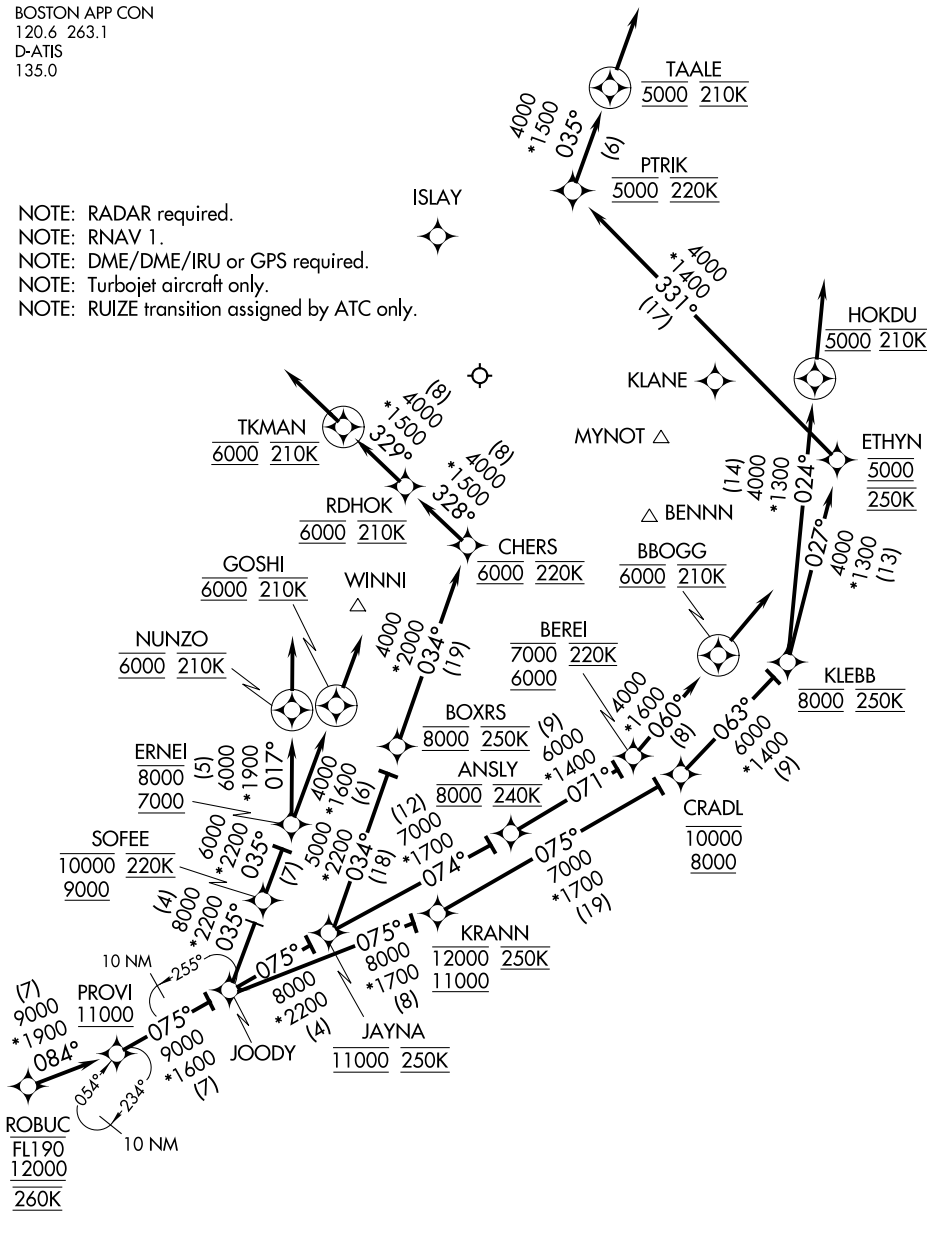


ROBUC THREE ARRIVAL (RNAV) Arrival Routes

BOSTON APP CON  
120.6 263.1  
D-ATIS  
135.0

- NOTE: RADAR required.
- NOTE: RNAV 1.
- NOTE: DME/DME/IRU or GPS required.
- NOTE: Turbojet aircraft only.
- NOTE: RUIZE transition assigned by ATC only.



NE-1, 22 FEB 2024 to 21 MAR 2024

NE-1, 22 FEB 2024 to 21 MAR 2024

NOTE: Chart not to scale.

(NARRATIVE ON FOLLOWING PAGE)

ROBUC THREE ARRIVAL (RNAV) Arrival Routes