

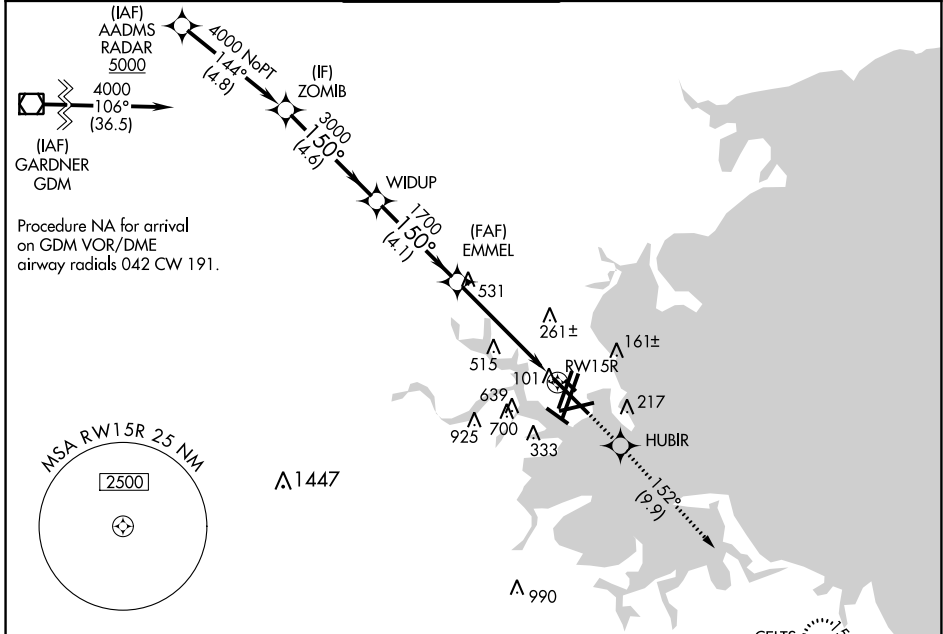
WAAS CH <b>42925</b> <b>W15A</b>	APP CRS <b>150°</b>	Rwy ldg TDZE Apt Elev	<b>9201</b> <b>17</b> <b>19</b>
--	------------------------	-----------------------------	---------------------------------------

# RNAV (GPS) RWY 15R

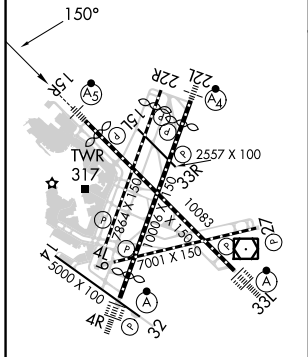
GENERAL EDWARD LAWRENCE LOGAN INTL (BOS)

RNP APCH.	MALSR	MISSED APPROACH: Climb to 3000 direct HUBIR and on track 152° to CELTS and hold.
<p>▼ For uncompensated Baro-VNAV systems, LNAV/VNAV NA below -15°C or above 54°C. Circling NA to Rwy 14. Circling NA for Cats C and D west of Rwys 4L and 15R. For inop ALS, increase LNAV Cats C and D visibility to 1 3/8 SM.</p>		

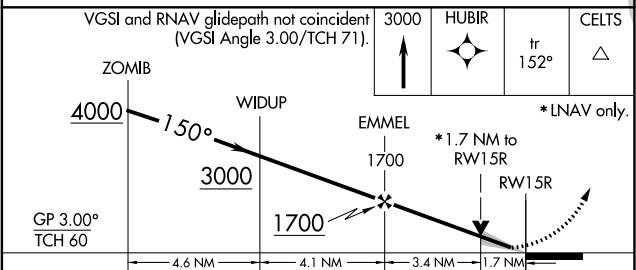
D-ATIS <b>135.0</b>	BOSTON APP CON <b>120.6 263.1</b>	BOSTON TOWER <b>128.8 257.8 (WEST)</b> <b>132.225 257.8 (EAST)</b>	GND CON <b>121.75 121.9</b>	CLNC DEL <b>121.65 257.8</b>	CPDLC
------------------------	--------------------------------------	--	--------------------------------	---------------------------------	-------



ELEV 19	<b>D</b>	TDZE 17
---------	----------	---------



TDZ/CL Rwys 4R, 15R and 33L  
REIL Rwys 4L, 27 and 32  
MIRL Rwy 15L-33R  
HIRL Rwys 4L-22R, 4R-22L, 9-27, 14-32 and 15R-33L



CATEGORY	A	B	C	D
LPV DA	217/18		200 (200-1/2)	
LNAV/VNAV DA	567-1 1/8		550 (600-1 1/8)	
LNAV MDA	620/24	603 (700-1/2)	620-1 3/8	603 (700-1 3/8)
<b>C</b> CIRCLING	940-1 1/4 921 (1000-1 1/4)	1040-1 1/2 1021 (1100-1 1/2)	620-1 3/4 601 (700-1 3/4)	620-2 601 (700-2)

NE-1, 22 FEB 2024 to 21 MAR 2024

NE-1, 22 FEB 2024 to 21 MAR 2024