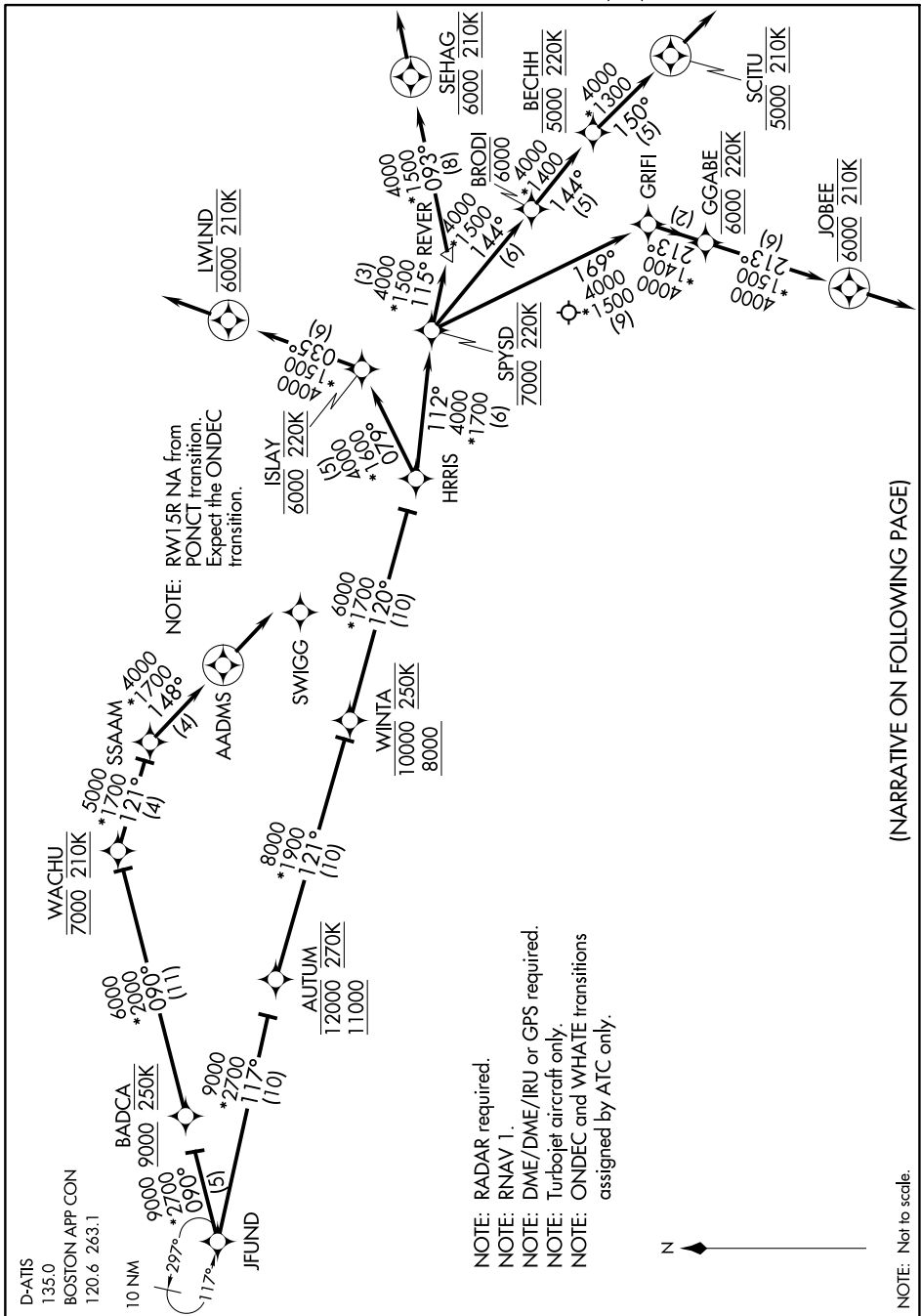


JFUND TWO ARRIVAL(RNAV) Arrival Routes

AL-58 (FAA)

BOSTON, MASSACHUSETTS

NE-1, 22 FEB 2024 to 21 MAR 2024



- NOTE: RADAR required.
- NOTE: RNAV 1.
- NOTE: DME/DME/IRU or GPS required.
- NOTE: Turbojet aircraft only.
- NOTE: ONDEC and WHATIE transitions assigned by ATIS only.



(NARRATIVE ON FOLLOWING PAGE)

NOTE: Not to scale.

NE-1, 22 FEB 2024 to 21 MAR 2024

JFUND TWO ARRIVAL(RNAV) Arrival Routes

BOSTON, MASSACHUSETTS