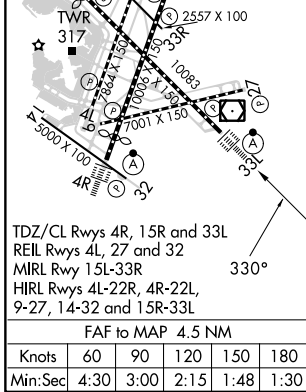
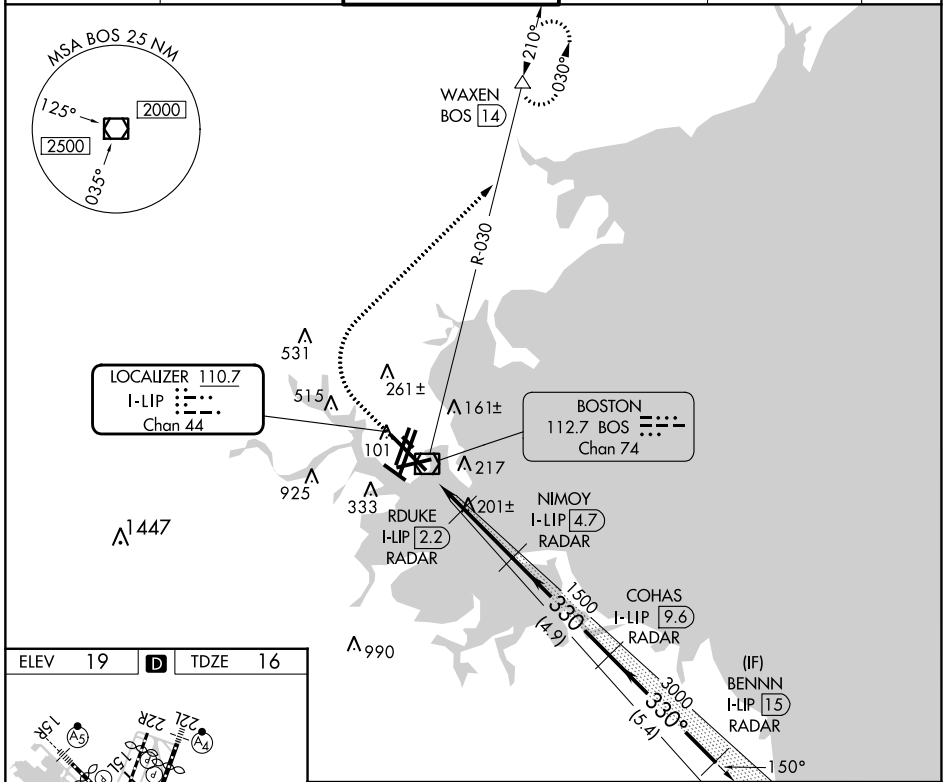


LOC/DME I-LIP	APP CRS	Rwy Idg	10083
110.7	330°	TDZE	16
Chan 44		Apt Elev	19

ILS or LOC RWY 33L

GENERAL EDWARD LAWRENCE LOGAN INTL (BOS)

RADAR required for procedure entry, DME.		ALSF-2	MISSED APPROACH: Climb to 1500 then climbing right turn to 3000 on BOS VOR/DME R-030 to WAXEN/BOS 14 DME and hold.		
Circling NA for Cats C and D west of Rwys 4L and 15R. Circling NA to Rwy 14.					
D-ATIS	BOSTON APP CON	BOSTON TOWER	GND CON	CLNC DEL	CPDLC
135.0	120.6 263.1	128.8 257.8 (WEST) 132.225 257.8 (EAST)	121.75 121.9	121.65 257.8	



ELEV 19	D	TDZE 16	1500 3000 WAXEN BOS R-030 VGSIL and ILS glidepath not coincident (VGSIL Angle 3.00/TCH 68). BENNN I-LIP 15 RADAR NIMOY I-LIP 4.7 RADAR COHAS I-LIP 9.6 RADAR RDUKE I-LIP 2.2 RADAR I-LIP 0.2 I-LIP 1.4 I-LIP 1500 I-LIP 700 I-LIP 1500 I-LIP 3000 GS 3.00° TCH 57	
CATEGORY	A	B	C	D
S-ILS 33L	216/18 200 (200-½)			
S-LOC 33L	460/24	444 (500-½)	460/45	444 (500-¾)
CIRCLING	940-1¼ 921 (1000-1¼)	1040-1½ 1021 (1100-1½)	1040-3	1021 (1100-3)

NE-1, 22 FEB 2024 to 21 MAR 2024

NE-1, 22 FEB 2024 to 21 MAR 2024