

LOC/DME I-DGU 111.3 Chan 50	APP CRS 272°	Rwy ldg 7001 TDZE 17 Apt Elev 19
---	------------------------	---

ILS or LOC RWY 27

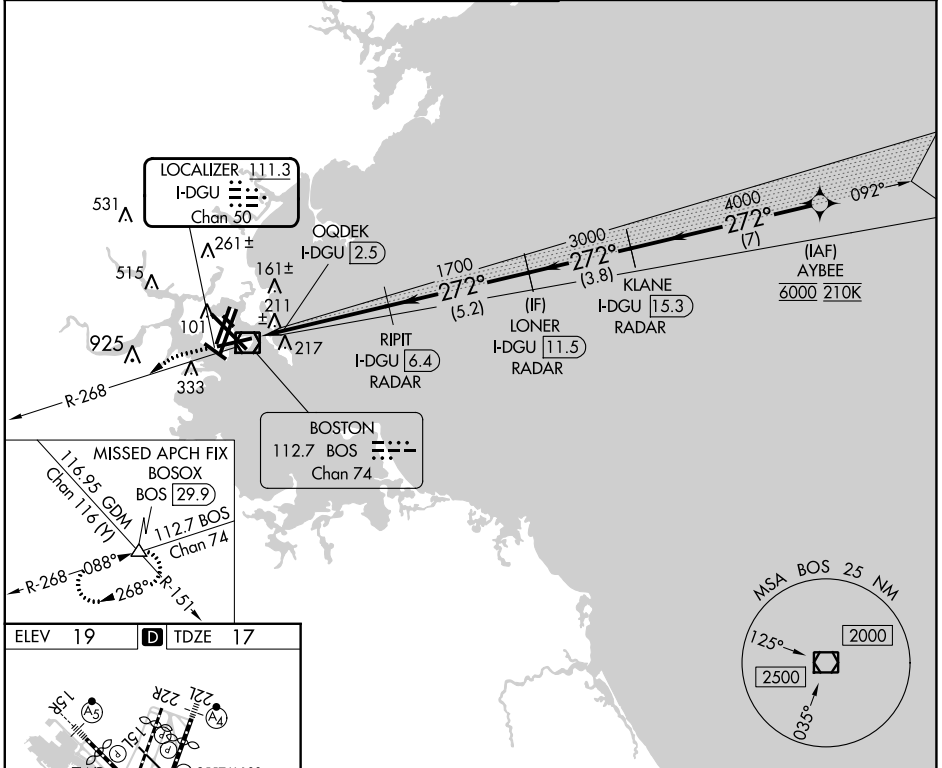
GENERAL EDWARD LAWRENCE LOGAN INTL (BOS)

DME or RADAR required. RADAR required for procedure entry.
From AYBEE: RNAV 1-GPS required.

MISSED APPROACH: Climb to 3000
on BOS VOR/DME R-268 to
BOSOX INT/BOS 29.9 DME and hold.

- Circling NA to Rwy 14.
- Circling NA for Cats C and D west of Rws 4L and 15R.

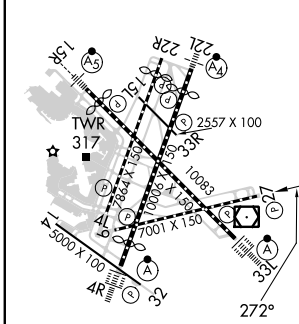
D-ATIS 135.0	BOSTON APP CON 120.6 263.1	BOSTON TOWER 128.8 257.8 (WEST) 132.225 257.8 (EAST)	GND CON 121.75 121.9	CLNC DEL 121.65 257.8	CPDLC
------------------------	--------------------------------------	--	--------------------------------	---------------------------------	-------



NE-1, 22 FEB 2024 to 21 MAR 2024

NE-1, 22 FEB 2024 to 21 MAR 2024

ELEV 19	D	TDZE 17
---------	----------	---------



TDZ/CL Rws 4R, 15R and 33L
REIL Rws 4L, 27 and 32
MIRL Rwy 15L-33R
HIRL Rws 4L-22R, 4R-22L,
9-27, 14-32 and 15R-33L

FAF to MAP 3.9 NM

Knots	60	90	120	150	180
Min:Sec	3:48	2:32	1:54	1:31	1:16

3000	BOSOX △	VGSi and ILS glidepath not coincident (VGSi Angle 3.00/TCH 71).		
BOS R-268	RIPIT I-DGU [6.4] RADAR	LONER I-DGU [11.5] RADAR	KLANE I-DGU [15.3] RADAR	AYBEE 6000
1700	1700	3000	4000	GS 3.00° TCH 57
1.2	3.9 NM	5.2 NM	3.8 NM	7 NM
CATEGORY	A	B	C	D
S-ILS 27	460-1½		443 (500-1½)	
S-LOC 27	460-1½		443 (500-1½)	
<input checked="" type="checkbox"/> CIRCLING	940-1½ 921 (1000-1½)	1040-1½ 1021 (1100-1½)	620-1¾ 601 (700-1¾)	620-2 601 (700-2)