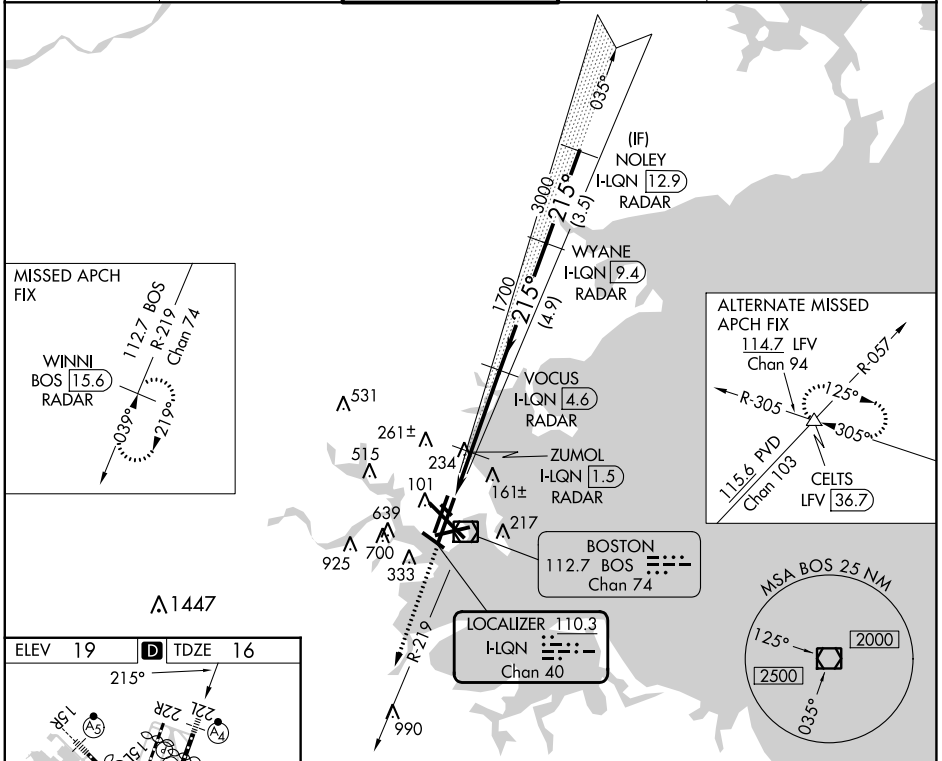


LOC/DME I-LQN	APP CRS	Rwy Idg	8806
110.3	215°	TDZE	16
Chan 40		Apt Elev	19

ILS or LOC RWY 22L

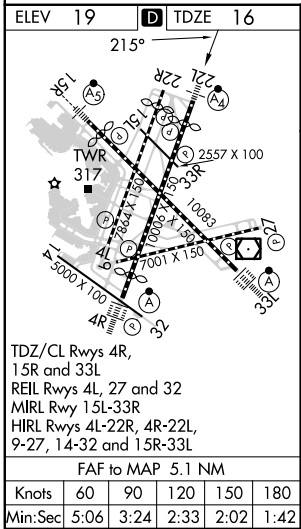
GENERAL EDWARD LAWRENCE LOGAN INTL (BOS)

RADAR required for procedure entry. DME or RADAR required.			MALSF	MISSED APPROACH: Climb to 3000 on BOS VOR/DME R-219 to WINNI/ BOS 15.6 DME/RADAR and hold.	
<p>▼ Inop table does not apply to S-ILS 22L. Circling NA for Cats C and D west of Rwy 4L and 15R. Circling NA to Rwy 14.</p> <p>▲</p>					
D-ATIS	BOSTON APP CON	BOSTON TOWER	GND CON	CLNC DEL	CPDLC
135.0	120.6 263.1	128.8 257.8 (WEST) 132.225 257.8 (EAST)	121.75 121.9	121.65 257.8	



NE-1, 22 FEB 2024 to 21 MAR 2024

NE-1, 22 FEB 2024 to 21 MAR 2024



3000	WINNI BOS 15.6	VGS I and ILS glidepath not coincident (VGS I Angle 3.00/TCH 71).		WYANE I-LQN 9.4	NOLEY I-LQN 12.9
BOS R-219		ZUMOL I-LQN 1.5	VOCUS I-LQN 4.6	RADAR	RADAR
*LOC only.		I-LQN DME ANT. 0.9			
			1700	1700	4000
			*700	3000	GS 3.00° TCH 55
			1.4 NM	0.6	3.1 NM
					4.9 NM
					3.5 NM
CATEGORY	A	B	C	D	
S-ILS 22L	216/40 200 (200-¾)				
S-LOC 22L	540/40	524 (600-¾)	540-1¼	524 (600-1¼)	
◻ CIRCLING	960-1¼ 941 (1000-1¼)	1060-1½ 1041 (1100-1½)	640-1¾ 621 (700-1¾)	640-2 621 (700-2)	