


LOC/DME I-MDC	APP CRS	Rwy Idg	9201
110.7	149°	TDZE	17
Chan 44		Apt Elev	19

ILS or LOC RWY 15R

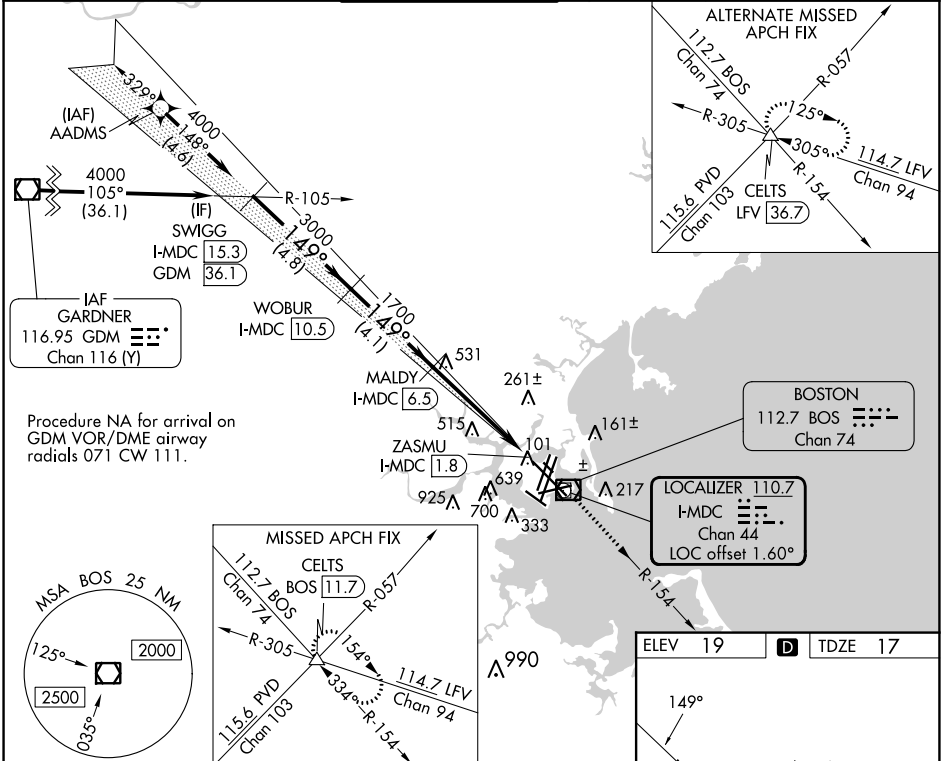
GENERAL EDWARD LAWRENCE LOGAN INTL (BOS)

DME required. From AADMS: RNAV 1-GPS required.

⚠ Circling NA for Cats C and D west of Rwy 4L and 15R. Circling NA to Rwy 14. For inop ALS, increase S-LOC 15R Cat C/D visibility to 1½ SM.

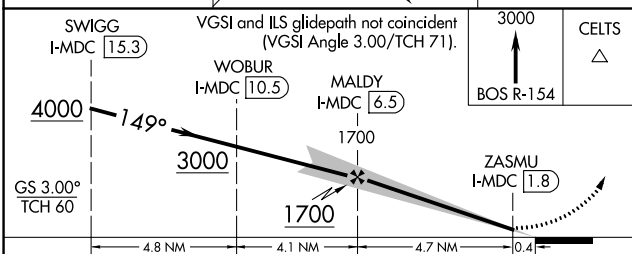
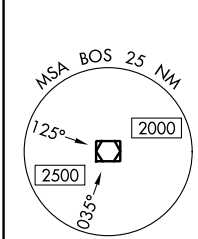
MALSR

 MISSED APPROACH: Climb to 3000 on BOS VOR/DME R-154 to CELTS INT/BOS 11.7 DME and hold.

D-ATIS 135.0	BOSTON APP CON 120.6 263.1	BOSTON TOWER 128.8 257.8 (WEST) 132.225 257.8 (EAST)	GND CON 121.75 121.9	CLNC DEL 121.65 257.8	CPDLC
------------------------	--------------------------------------	---	--------------------------------	---------------------------------	-------



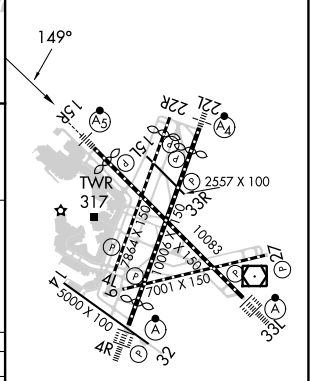
IAF GARDNER
116.95 GDM
Chan 116 (Y)

Procedure NA for arrival on GDM VOR/DME airway radials 071 CW 111.



CATEGORY	A	B	C	D
S-ILS 15R	267/24 250 (300-½)			
S-LOC 15R	580/24	563 (600-½)	580-1¼	563 (600-1¼)
C CIRCLING	940-1¼ 921 (1000-1¼)	1040-1½ 1021 (1100-1½)	620-1¾ 601 (700-1¾)	620-2 601 (700-2)

ELEV 19	D	TDZE 17
---------	----------	---------



TDZ/CL Rwy 4R, 15R and 33L
 REIL Rwy 4L, 27 and 32
 MIRL Rwy 15L-33R
 HIRL Rwy 4L-22R, 4R-22L, 9-27, 14-32 and 15R-33L

NE-1, 22 FEB 2024 to 21 MAR 2024

NE-1, 22 FEB 2024 to 21 MAR 2024