

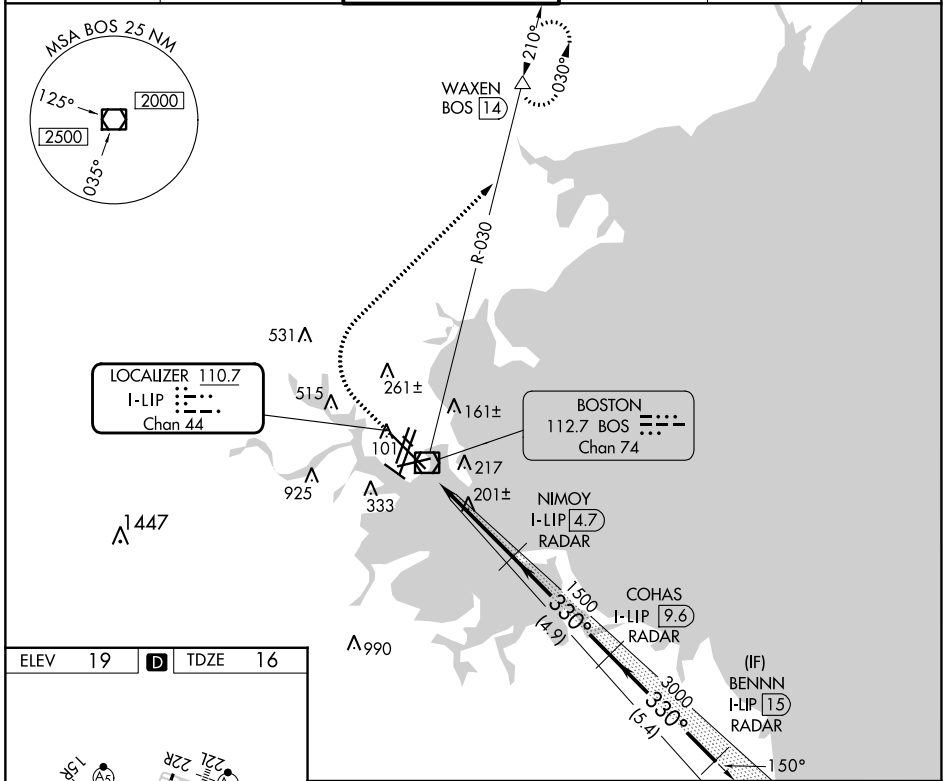
LOC/DME I-LIP	APP CRS	Rwy Idg	<b>10083</b>
<b>110.7</b>	<b>330°</b>	TDZE	<b>16</b>
Chan <b>44</b>		Apt Elev	<b>19</b>

# ILS RWY 33L (SA CAT I)

GENERAL EDWARD LAWRENCE LOGAN INTL (BOS)

RADAR required for procedure entry, DME.		ALSF-2	MISSED APPROACH: Climb to 1500 then climbing right turn to 3000 on BOS VOR/DME R-030 to WAXEN/BOS 14 DME and hold.	
Requires specific OPSPEC, MSPEC, or LOA approval.				

D-ATIS	BOSTON APP CON	BOSTON TOWER	GND CON	CLNC DEL	CPDLC
<b>135.0</b>	<b>120.6 263.1</b>	<b>128.8 257.8 (WEST)</b> <b>132.225 257.8 (EAST)</b>	<b>121.75 121.9</b>	<b>121.65 257.8</b>	

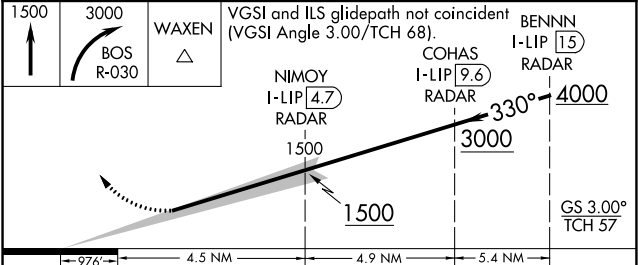


NE-1, 22 FEB 2024 to 21 MAR 2024

NE-1, 22 FEB 2024 to 21 MAR 2024

ELEV	<b>19</b>	<b>D</b>	TDZE	<b>16</b>
------	-----------	----------	------	-----------

TDZ/CL Rwy 4R, 15R and 33L  
 REIL Rwy 4L, 27 and 32  
 MIRL Rwy 15L-33R  
 HIRL Rwy 4L-22R, 4R-22L, 9-27, 14-32 and 15R-33L



CATEGORY	A	B	C	D
S-ILS 33L	RA 166/14 150 DA 166			

## SA CATEGORY I - SPECIAL AIRCREW & AIRCRAFT CERTIFICATION REQUIRED